

**SCREENING REPORT FOR AN ENVIRONMENTAL AUTHORIZATION AS  
REQUIRED BY THE 2014 EIA REGULATIONS – PROPOSED DEVELOPMENT  
FOOTPRINT ENVIRONMENTAL SENSITIVITY**

**EIA Reference number:** TBC

**Project name:** Ngqamakhwe Regional WSS - Phase 3

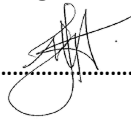
**Project title:** Ngqamakhwe Regional WSS - Phase 3

**Date screening report generated:** 11/12/2025 13:20:04

**Applicant:** Amathole District Municipality

**Compiler:** Megan Hugo - Reg EAP: 2019/1530

**Compiler signature:**



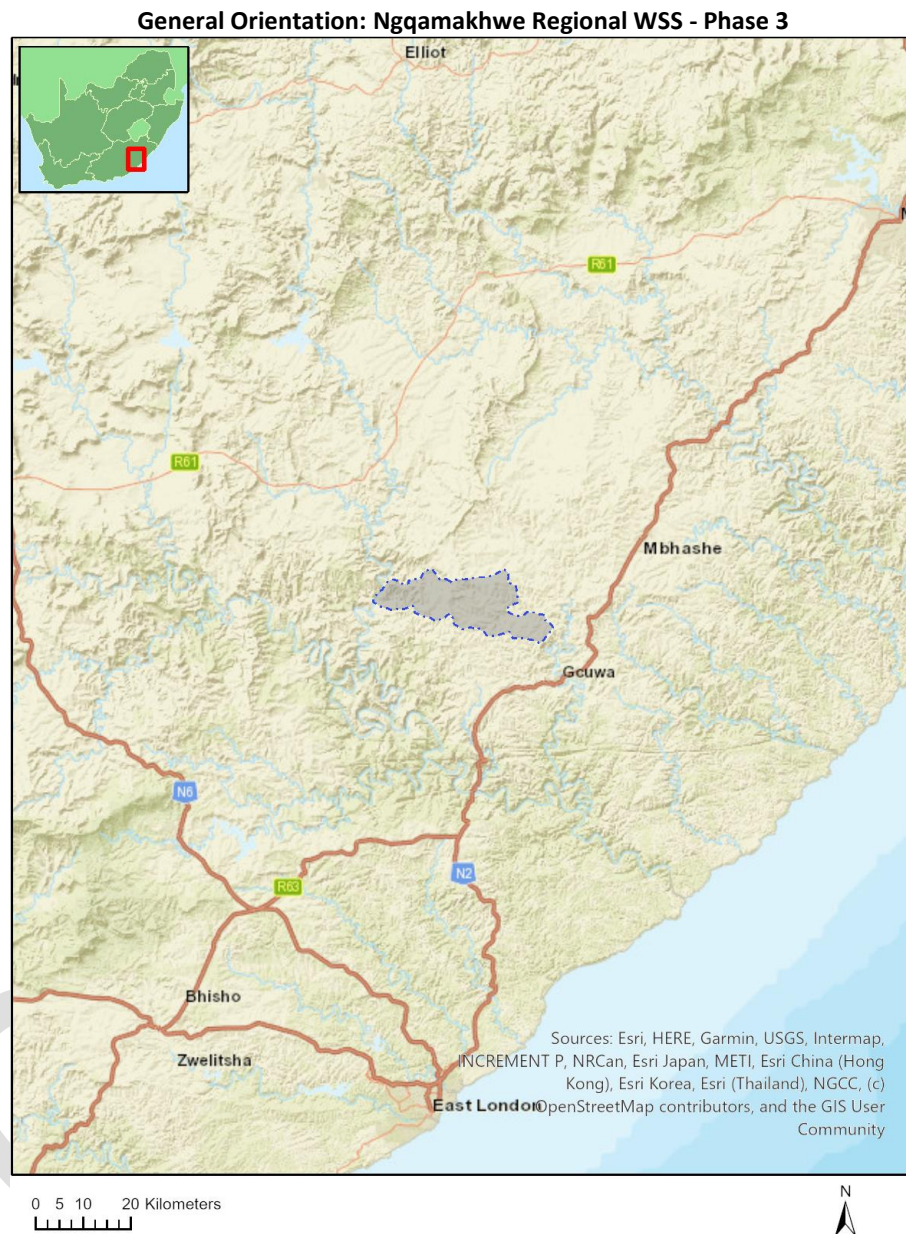
**Application Category:** Utilities Infrastructure|Pipelines|Water|Fresh\_Storm Water

## Table of Contents

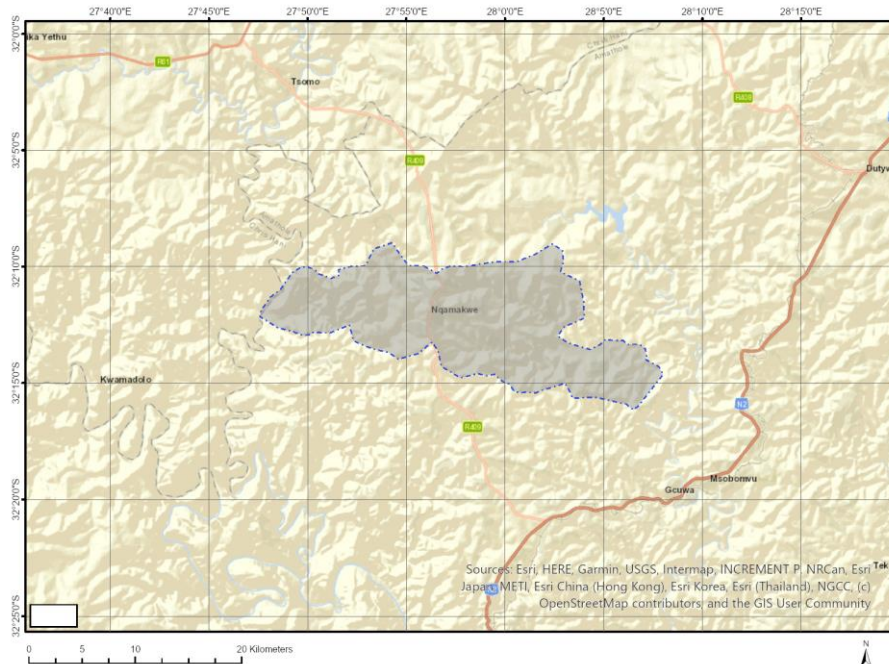
Proposed Project Location .....	3
Orientation map 1: General location .....	3
Map of proposed site and relevant area(s) .....	4
Cadastral details of the proposed site .....	4
Wind and Solar developments with an approved Environmental Authorisation or applications under consideration within 30 km of the proposed area .....	39
Environmental Management Frameworks relevant to the application .....	40
Environmental screening results and assessment outcomes .....	40
Relevant development incentives, restrictions, exclusions or prohibitions .....	40
Proposed Development Area Environmental Sensitivity .....	40
Specialist assessments identified .....	40
Results of the environmental sensitivity of the proposed area .....	42
MAP OF RELATIVE AGRICULTURE THEME SENSITIVITY .....	42
MAP OF RELATIVE ANIMAL SPECIES THEME SENSITIVITY .....	43
MAP OF RELATIVE AQUATIC BIODIVERSITY THEME SENSITIVITY .....	44
MAP OF RELATIVE ARCHAEOLOGICAL AND CULTURAL HERITAGE THEME SENSITIVITY .....	45
MAP OF RELATIVE CIVIL AVIATION THEME SENSITIVITY .....	46
MAP OF RELATIVE DEFENCE THEME SENSITIVITY .....	47
MAP OF RELATIVE PALEONTOLOGY THEME SENSITIVITY .....	48
MAP OF RELATIVE PLANT SPECIES THEME SENSITIVITY .....	49
MAP OF RELATIVE TERRESTRIAL BIODIVERSITY THEME SENSITIVITY .....	50

# Proposed Project Location

## Orientation map 1: General location



## Map of proposed site and relevant area(s)



## Cadastral details of the proposed site

Property details:

No	Farm Name	Farm/ Erf No	Portion	Latitude	Longitude	Property Type
1	NOFOTYO	1	0	32°12'16.88S	27°51'52.3E	Erven
2	MPAHLENI	1	0	32°11'40.72S	28°0'53.37E	Erven
3	MKATSHANE	1	0	32°11'24.35S	27°56'35.72E	Erven
4	TYEKANA	1	0	32°13'33.91S	28°6'42.01E	Erven
5	MBATSHA	1	0	32°12'32.99S	27°48'35.33E	Erven
6	SOKAPASE	1	0	32°14'22.03S	28°1'49.47E	Erven
7	NOBANDA	1	0	32°12'1.31S	27°55'29.17E	Erven
8	NQAMAKWE	1	0	32°13'9.93S	27°57'18.67E	Erven
9	NQAMAKWE	2	0	32°12'1.42S	27°57'18.7E	Erven
10	SOKAPASE	2	0	32°14'18.62S	28°1'42.98E	Erven
11	NOBANDA	2	0	32°12'10.17S	27°55'29.32E	Erven
12	MBATSHA	2	0	32°12'36.01S	27°48'36.73E	Erven
13	TYEKANA	2	0	32°13'33.83S	28°6'37.43E	Erven
14	MPAHLENI	2	0	32°11'35.17S	28°0'59.72E	Erven
15	NOFOTYO	2	0	32°12'11.1S	27°51'46.23E	Erven
16	MKATSHANE	2	0	32°11'20.4S	27°56'32.67E	Erven
17	NQAMAKWE	3	0	32°11'51.93S	27°57'58.26E	Erven
18	TYEKANA	3	0	32°13'34.75S	28°6'33.96E	Erven
19	NOFOTYO	3	0	32°12'8.57S	27°51'40.9E	Erven
20	SOKAPASE	3	0	32°14'2.12S	28°1'35E	Erven
21	NOBANDA	3	0	32°12'20.71S	27°55'30.59E	Erven
22	MBATSHA	3	0	32°12'38.06S	27°48'38.48E	Erven
23	MPAHLENI	3	0	32°11'41.49S	28°0'59.99E	Erven
24	MKATSHANE	3	0	32°11'15.52S	27°56'37.72E	Erven
25	SOBEKWA	4	0	32°10'45.5S	27°56'3.19E	Erven
26	NQAMAKWE	4	0	32°12'39.25S	27°57'39.09E	Erven
27	NOFOTYO	4	0	32°12'16.56S	27°51'44.24E	Erven

28	TYEKANA	4	0	32°13'34.57S	28°6'30.73E	Erven
29	MBATSHA	4	0	32°12'40.78S	27°48'41.67E	Erven
30	MPAHLENI	4	0	32°11'41.88S	28°1'3.81E	Erven
31	MKATSHANE	4	0	32°11'22.66S	27°56'41.77E	Erven
32	MBULU	4	0	32°10'59.61S	27°48'41.72E	Erven
33	SOKAPASE	4	0	32°13'59.33S	28°1'26.37E	Erven
34	NOBANDA	4	0	32°12'19.01S	27°55'25.58E	Erven
35	SOBEKWA	5	0	32°10'44.32S	27°55'57.04E	Erven
36	NQAMAKWE	5	0	32°12'20.7S	27°57'8.61E	Erven
37	NOFOTYO	5	0	32°12'20.01S	27°51'41.5E	Erven
38	NOBANDA	5	0	32°12'18.95S	27°55'18.48E	Erven
39	TYEKANA	5	0	32°13'38.61S	28°6'30.05E	Erven
40	MPAHLENI	5	0	32°11'45.1S	28°1'10.31E	Erven
41	SOKAPASE	5	0	32°14'5.14S	28°1'21.02E	Erven
42	MBULU	5	0	32°11'4.54S	27°48'37.01E	Erven
43	MKATSHANE	5	0	32°11'22.61S	27°56'47.18E	Erven
44	SOBEKWA	6	0	32°10'41.62S	27°55'53.7E	Erven
45	TYEKANA	6	0	32°13'34.38S	28°6'24.13E	Erven
46	SOKAPASE	6	0	32°14'9.59S	28°1'30.05E	Erven
47	MBATSHA	6	0	32°12'46.35S	27°48'52.72E	Erven
48	NOBANDA	6	0	32°12'15.15S	27°55'16.26E	Erven
49	MPAHLENI	6	0	32°11'47.99S	28°1'2.6E	Erven
50	NOFOTYO	6	0	32°12'23.51S	27°51'40.58E	Erven
51	MKATSHANE	6	0	32°11'16.46S	27°56'48.36E	Erven
52	MBULU	6	0	32°11'6.75S	27°48'33.34E	Erven
53	NQAMAKWE	7	0	32°12'1.9S	27°56'17.05E	Erven
54	SOBEKWA	7	0	32°10'38.31S	27°55'50.75E	Erven
55	SOKAPASE	7	0	32°14'10.52S	28°1'32.15E	Erven
56	MBATSHA	7	0	32°12'48.56S	27°48'58.14E	Erven
57	MPAHLENI	7	0	32°11'50.71S	28°0'56.3E	Erven
58	MKATSHANE	7	0	32°11'21.88S	27°56'57.41E	Erven
59	NOFOTYO	7	0	32°12'25.66S	27°51'39.25E	Erven
60	TYEKANA	7	0	32°13'35.39S	28°6'19.99E	Erven
61	NOBANDA	7	0	32°12'15.1S	27°55'9.14E	Erven
62	MBULU	7	0	32°11'8.28S	27°48'28.58E	Erven
63	SOBEKWA	8	0	32°10'33.29S	27°55'48.76E	Erven
64	TYEKANA	8	0	32°13'39.39S	28°6'18.11E	Erven
65	MPAHLENI	8	0	32°11'53.71S	28°0'52.89E	Erven
66	NOFOTYO	8	0	32°12'30.19S	27°51'37.97E	Erven
67	MBULU	8	0	32°11'16.15S	27°48'7.15E	Erven
68	NOBANDA	8	0	32°12'8.97S	27°55'14.96E	Erven
69	SOKAPASE	8	0	32°14'9.89S	28°1'36.75E	Erven
70	MKATSHANE	8	0	32°11'26.99S	27°56'53.18E	Erven
71	NQAMAKWE	9	0	32°12'2.97S	27°56'20.41E	Erven
72	SOKAPASE	9	0	32°14'17.26S	28°1'34.26E	Erven
73	NOBANDA	9	0	32°12'4.73S	27°55'17.85E	Erven
74	MBULU	9	0	32°11'19.81S	27°48'10E	Erven
75	MKATSHANE	9	0	32°11'21.59S	27°57'13.34E	Erven
76	NOFOTYO	9	0	32°12'36.44S	27°51'42.49E	Erven
77	TYEKANA	9	0	32°13'45.81S	28°6'28.97E	Erven
78	SOBEKWA	9	0	32°10'27.73S	27°55'46.97E	Erven
79	MPAHLENI	9	0	32°11'56.62S	28°0'49.93E	Erven
80	NQAMAKWE	10	0	32°12'3.77S	27°56'20.03E	Erven
81	NOBANDA	10	0	32°12'9.01S	27°55'22.92E	Erven
82	MPAHLENI	10	0	32°11'59.34S	28°0'47.45E	Erven
83	NOFOTYO	10	0	32°12'33.11S	27°51'30.53E	Erven
84	MBULU	10	0	32°11'23.07S	27°48'7.78E	Erven
85	TYEKANA	10	0	32°13'47.68S	28°6'22.43E	Erven
86	SOBEKWA	10	0	32°10'20.47S	27°55'41.02E	Erven
87	SOKAPASE	10	0	32°14'23.35S	28°1'35.48E	Erven



88	MKATSHANE	10	0	32°11'20.91S	27°57'16.53E	Erven
89	SOBEKWA	11	0	32°10'12.58S	27°55'48.75E	Erven
90	NQAMAKWE	11	0	32°12'4.55S	27°56'19.66E	Erven
91	SOKAPASE	11	0	32°14'27.73S	28°1'36.03E	Erven
92	NOFOTYO	11	0	32°12'39.4S	27°51'31.02E	Erven
93	TYEKANA	11	0	32°13'50.83S	28°6'19.21E	Erven
94	MBULU	11	0	32°11'29.46S	27°48'4.06E	Erven
95	MKATSHANE	11	0	32°11'19.49S	27°57'19.32E	Erven
96	MPAHLENI	11	0	32°12'1.88S	28°0'44.6E	Erven
97	NOBANDA	11	0	32°12'0.68S	27°55'20.89E	Erven
98	SOBEKWA	12	0	32°10'11.03S	27°55'44.64E	Erven
99	NQAMAKWE	12	0	32°12'5.34S	27°56'19.27E	Erven
100	NOBANDA	12	0	32°11'56.18S	27°55'25.06E	Erven
101	TYEKANA	12	0	32°13'56.06S	28°6'20.67E	Erven
102	NOFOTYO	12	0	32°12'42S	27°51'17.88E	Erven
103	SOKAPASE	12	0	32°14'32.26S	28°1'43.71E	Erven
104	MPAHLENI	12	0	32°12'4.31S	28°0'41.49E	Erven
105	MBULU	12	0	32°11'34.14S	27°47'58.93E	Erven
106	MKATSHANE	12	0	32°11'17.18S	27°57'23.05E	Erven
107	SOBEKWA	13	0	32°10'10.19S	27°55'39.93E	Erven
108	NQAMAKWE	13	0	32°12'6.13S	27°56'18.89E	Erven
109	MPAHLENI	13	0	32°12'9.56S	28°0'35.71E	Erven
110	NOFOTYO	13	0	32°12'34.87S	27°51'22.99E	Erven
111	TYEKANA	13	0	32°13'51.61S	28°6'12.36E	Erven
112	SOKAPASE	13	0	32°14'28.77S	28°1'46.3E	Erven
113	MBULU	13	0	32°11'39.5S	27°47'52.75E	Erven
114	MKATSHANE	13	0	32°11'11.94S	27°57'22.6E	Erven
115	NOBANDA	13	0	32°11'54.07S	27°55'15.06E	Erven
116	NQAMAKWE	14	0	32°12'6.91S	27°56'18.52E	Erven
117	MKATSHANE	14	0	32°11'15.12S	27°57'29.3E	Erven
118	NOBANDA	14	0	32°11'58.31S	27°55'12.13E	Erven
119	NOFOTYO	14	0	32°12'26.25S	27°51'20.61E	Erven
120	MBULU	14	0	32°11'46.89S	27°47'47.82E	Erven
121	MPAHLENI	14	0	32°12'10.27S	28°0'47.99E	Erven
122	SOBEKWA	14	0	32°10'10.69S	27°55'35.51E	Erven
123	SOKAPASE	14	0	32°14'34.76S	28°1'51.68E	Erven
124	TYEKANA	14	0	32°13'55.21S	28°6'9.59E	Erven
125	SOBEKWA	15	0	32°10'10.84S	27°55'30.14E	Erven
126	NQAMAKWE	15	0	32°12'7.71S	27°56'18.14E	Erven
127	MKATSHANE	15	0	32°11'7.41S	27°57'38.28E	Erven
128	NOBANDA	15	0	32°12'2.64S	27°55'9.14E	Erven
129	MPAHLENI	15	0	32°12'1.6S	28°0'58.26E	Erven
130	NOFOTYO	15	0	32°12'20.01S	27°51'30.34E	Erven
131	SOKAPASE	15	0	32°14'40.02S	28°1'41.64E	Erven
132	MBULU	15	0	32°11'50.38S	27°47'44.79E	Erven
133	TYEKANA	15	0	32°13'59.82S	28°6'17.86E	Erven
134	NQAMAKWE	16	0	32°12'8.49S	27°56'17.75E	Erven
135	MPAHLENI	16	0	32°11'58.97S	28°1'7.33E	Erven
136	NOFOTYO	16	0	32°12'15.12S	27°51'23.57E	Erven
137	TYEKANA	16	0	32°14'1.37S	28°6'12.83E	Erven
138	SOKAPASE	16	0	32°14'36.46S	28°1'38.33E	Erven
139	NOBANDA	16	0	32°12'6.88S	27°55'6.22E	Erven
140	SOBEKWA	16	0	32°10'21.57S	27°55'32.35E	Erven
141	MKATSHANE	16	0	32°11'13.16S	27°57'36.3E	Erven
142	MBULU	16	0	32°11'53.14S	27°47'41.61E	Erven
143	SOBEKWA	17	0	32°10'23.84S	27°55'25.59E	Erven
144	NOBANDA	17	0	32°12'11.22S	27°55'3.22E	Erven
145	MKATSHANE	17	0	32°11'12.13S	27°57'42.84E	Erven
146	MBULU	17	0	32°11'53.74S	27°47'37.06E	Erven
147	NQAMAKWE	17	0	32°12'9.29S	27°56'17.38E	Erven

148	NOFOTYO	17	0	32°12'5.87S	27°51'18.9E	Erven
149	MPAHLENI	17	0	32°11'55.72S	28°1'12.79E	Erven
150	SOKAPASE	17	0	32°14'43.45S	28°1'33.95E	Erven
151	TYEKANA	17	0	32°14'4.26S	28°6'10.25E	Erven
152	NQAMAKWE	18	0	32°12'7.82S	27°56'13.43E	Erven
153	NOFOTYO	18	0	32°12'0S	27°51'18E	Erven
154	MKATSHANE	18	0	32°11'17.4S	27°57'47.84E	Erven
155	TYEKANA	18	0	32°14'10.3S	28°6'6.3E	Erven
156	SOKAPASE	18	0	32°14'54.8S	28°1'36.54E	Erven
157	MANQALAZA	18	0	32°12'23.55S	28°3'36.7E	Erven
158	MPAHLENI	18	0	32°11'52.11S	28°1'7.61E	Erven
159	NOBANDA	18	0	32°12'15.45S	27°55'0.3E	Erven
160	SOBEKWA	18	0	32°10'11.69S	27°55'23.41E	Erven
161	MBULU	18	0	32°12'1.71S	27°47'37.93E	Erven
162	SOBEKWA	19	0	32°10'13.42S	27°55'13.94E	Erven
163	NOBANDA	19	0	32°12'13.41S	27°54'51.68E	Erven
164	MPAHLENI	19	0	32°11'50.07S	28°1'14.44E	Erven
165	MBULU	19	0	32°12'1.16S	27°47'34.15E	Erven
166	NQAMAKWE	19	0	32°12'8.24S	27°56'14.66E	Erven
167	NOFOTYO	19	0	32°11'56.4S	27°51'17.65E	Erven
168	MANQALAZA	19	0	32°12'17.58S	28°3'36.27E	Erven
169	SOKAPASE	19	0	32°14'57.21S	28°1'29.39E	Erven
170	TYEKANA	19	0	32°14'17.1S	28°5'49.9E	Erven
171	MKATSHANE	19	0	32°11'24.97S	27°57'51.14E	Erven
172	NQAMAKWE	20	0	32°12'7.09S	27°56'14.53E	Erven
173	NOBANDA	20	0	32°12'9.18S	27°54'54.6E	Erven
174	SOKAPASE	20	0	32°14'48.04S	28°1'29.28E	Erven
175	NOFOTYO	20	0	32°11'53.42S	27°51'27.27E	Erven
176	MPAHLENI	20	0	32°11'49.44S	28°1'19.97E	Erven
177	MKATSHANE	20	0	32°11'16.19S	27°57'54.14E	Erven
178	SOBEKWA	20	0	32°10'25.3S	27°55'19.68E	Erven
179	TYEKANA	20	0	32°14'11.78S	28°5'40.1E	Erven
180	SOBEKWA	21	0	32°10'23.65S	27°55'14.31E	Erven
181	NQAMAKWE	21	0	32°12'6.16S	27°56'14.99E	Erven
182	MPAHLENI	21	0	32°11'52.38S	28°1'24.2E	Erven
183	MKATSHANE	21	0	32°11'9.11S	27°57'55.45E	Erven
184	TYEKANA	21	0	32°14'8.08S	28°5'37.27E	Erven
185	SOKAPASE	21	0	32°14'47.08S	28°1'22.17E	Erven
186	NOFOTYO	21	0	32°11'52.97S	27°51'22.06E	Erven
187	NOBANDA	21	0	32°12'4.82S	27°54'57.6E	Erven
188	SOKAPASE	22	0	32°14'48.08S	28°1'14.59E	Erven
189	TYEKANA	22	0	32°14'5.1S	28°5'36.1E	Erven
190	NOFOTYO	22	0	32°11'52.53S	27°51'16.01E	Erven
191	NOBANDA	22	0	32°12'0.59S	27°55'0.52E	Erven
192	SOBEKWA	22	0	32°10'22.8S	27°55'7.54E	Erven
193	MPAHLENI	22	0	32°11'58.03S	28°1'19.53E	Erven
194	MKATSHANE	22	0	32°11'8.67S	27°58'0.15E	Erven
195	NQAMAKWE	22	0	32°12'5.21S	27°56'15.45E	Erven
196	SOBEKWA	23	0	32°10'15.34S	27°55'4.43E	Erven
197	NOBANDA	23	0	32°11'56.25S	27°55'3.51E	Erven
198	SOKAPASE	23	0	32°14'42.68S	28°1'20.19E	Erven
199	NOFOTYO	23	0	32°11'52.22S	27°51'9.82E	Erven
200	MPAHLENI	23	0	32°12'1.13S	28°1'24.27E	Erven
201	MKATSHANE	23	0	32°11'9.05S	27°58'4.11E	Erven
202	NQAMAKWE	23	0	32°12'3.38S	27°56'16.33E	Erven
203	TYEKANA	23	0	32°14'1.72S	28°5'33.42E	Erven
204	SOBEKWA	24	0	32°10'16.14S	27°54'59.05E	Erven
205	TYEKANA	24	0	32°13'58.94S	28°5'29.8E	Erven
206	NOFOTYO	24	0	32°11'43.3S	27°51'10.36E	Erven
207	NOBANDA	24	0	32°11'52.02S	27°55'6.43E	Erven

208	NQAMAKWE	24	0	32°12'2.58S	27°56'16.72E	Erven
209	MPAHLENI	24	0	32°11'59.21S	28°1'30.44E	Erven
210	SOKAPASE	24	0	32°14'39.04S	28°1'27.91E	Erven
211	MKATSHANE	24	0	32°11'7.36S	27°58'7.55E	Erven
212	NOBANDA	25	0	32°11'49.98S	27°54'57.81E	Erven
213	SOKAPASE	25	0	32°14'35.75S	28°1'30.58E	Erven
214	TYEKANA	25	0	32°13'58.46S	28°5'8.43E	Erven
215	NQAMAKWE	25	0	32°12'0.92S	27°56'31.85E	Erven
216	MKATSHANE	25	0	32°11'1.42S	27°58'7.16E	Erven
217	MPAHLENI	25	0	32°11'57.63S	28°1'38.25E	Erven
218	SOBEKWA	25	0	32°10'10.78S	27°54'59.37E	Erven
219	NOFOTYO	25	0	32°11'44.77S	27°51'17.44E	Erven
220	SOBEKWA	26	0	32°10'18.2S	27°54'52.44E	Erven
221	MPAHLENI	26	0	32°11'53.36S	28°1'32.34E	Erven
222	NQAMAKWE	26	0	32°12'1.87S	27°56'31.38E	Erven
223	NOFOTYO	26	0	32°11'34.18S	27°51'12.66E	Erven
224	NOBANDA	26	0	32°11'54.21S	27°54'54.9E	Erven
225	SOKAPASE	26	0	32°14'32.25S	28°1'33.45E	Erven
226	TYEKANA	26	0	32°13'52.65S	28°5'15.48E	Erven
227	MKATSHANE	26	0	32°10'57.09S	27°57'58E	Erven
228	SOKAPASE	27	0	32°14'30.54S	28°1'24.97E	Erven
229	MKATSHANE	27	0	32°10'45.2S	27°57'19.79E	Erven
230	TYEKANA	27	0	32°13'46.95S	28°5'20.78E	Erven
231	NOFOTYO	27	0	32°11'28.05S	27°51'10.84E	Erven
232	NOBANDA	27	0	32°11'58.55S	27°54'51.9E	Erven
233	NQAMAKWE	27	0	32°12'2.8S	27°56'30.9E	Erven
234	SOBEKWA	27	0	32°10'24.16S	27°54'59.52E	Erven
235	MPAHLENI	27	0	32°11'46.31S	28°1'26.1E	Erven
236	MANQALAZA	27	0	32°13'28.87S	28°4'1.34E	Erven
237	MKATSHANE	27	0	32°10'53.27S	27°57'57.11E	Erven
238	SOBEKWA	28	0	32°10'32.55S	27°55'2.93E	Erven
239	SOKAPASE	28	0	32°14'22.11S	28°1'23.26E	Erven
240	MANQALAZA	28	0	32°13'32.86S	28°4'4.84E	Erven
241	MPAHLENI	28	0	32°11'42.4S	28°1'18.15E	Erven
242	NOBANDA	28	0	32°12'2.78S	27°54'48.98E	Erven
243	TYEKANA	28	0	32°13'39.18S	28°5'26.99E	Erven
244	NOFOTYO	28	0	32°11'28.82S	27°51'16.21E	Erven
245	MKATSHANE	28	0	32°10'49.33S	27°57'55.24E	Erven
246	NOFOTYO	29	0	32°11'19.08S	27°51'33.9E	Erven
247	MPAHLENI	29	0	32°11'36.11S	28°1'9.1E	Erven
248	MKATSHANE	29	0	32°11'7.12S	27°58'12.05E	Erven
249	TYEKANA	29	0	32°13'34.97S	28°5'33.87E	Erven
250	NOBANDA	29	0	32°12'7.12S	27°54'45.98E	Erven
251	SOKAPASE	29	0	32°14'14.97S	28°1'22.58E	Erven
252	MANQALAZA	29	0	32°13'34.75S	28°4'8.85E	Erven
253	SOBEKWA	29	0	32°10'29.41S	27°55'8.2E	Erven
254	SOBEKWA	30	0	32°10'50.89S	27°55'30.23E	Erven
255	SOKAPASE	30	0	32°14'16.76S	28°1'19.55E	Erven
256	NOFOTYO	30	0	32°11'13.81S	27°51'33.87E	Erven
257	MPAHLENI	30	0	32°11'32.3S	28°1'12.39E	Erven
258	MKATSHANE	30	0	32°11'11.5S	27°58'14.4E	Erven
259	TYEKANA	30	0	32°13'34.72S	28°5'39.94E	Erven
260	NOBANDA	30	0	32°12'11.35S	27°54'43.06E	Erven
261	MANQALAZA	30	0	32°13'37.14S	28°4'14.33E	Erven
262	MPAHLENI	31	0	32°11'29.28S	28°1'23.24E	Erven
263	TYEKANA	31	0	32°13'32.82S	28°5'45.91E	Erven
264	MKATSHANE	31	0	32°11'15.25S	27°58'16.8E	Erven
265	SOBEKWA	31	0	32°10'45.86S	27°55'24.11E	Erven
266	NOBANDA	31	0	32°12'8.3S	27°54'34.71E	Erven
267	SOKAPASE	31	0	32°14'8.43S	28°1'13.18E	Erven



268	NOFOTYO	31	0	32°10'59.06S	27°51'33.34E	Erven
269	MANQALAZA	31	0	32°13'39.92S	28°4'21.56E	Erven
270	SOBEKWA	32	0	32°10'41S	27°55'18.87E	Erven
271	SOKAPASE	32	0	32°14'17.73S	28°1'14.64E	Erven
272	NOFOTYO	32	0	32°10'55.07S	27°51'50.18E	Erven
273	MBATSHA	32	0	32°12'41.22S	27°48'31.45E	Erven
274	NQAMAKWE	32	0	32°12'2.06S	27°56'34.95E	Erven
275	NOBANDA	32	0	32°12'4.07S	27°54'37.63E	Erven
276	MKATSHANE	32	0	32°11'23.02S	27°58'19.23E	Erven
277	MANQALAZA	32	0	32°13'37.55S	28°4'31.27E	Erven
278	MPAHLENI	32	0	32°11'34.39S	28°1'25.65E	Erven
279	TYEKANA	32	0	32°13'28.77S	28°5'51.99E	Erven
280	SOBEKWA	33	0	32°10'39.32S	27°55'12.88E	Erven
281	SOKAPASE	33	0	32°14'20.34S	28°1'9.91E	Erven
282	MPAHLENI	33	0	32°11'39.46S	28°1'27.02E	Erven
283	TYEKANA	33	0	32°13'24.28S	28°5'57.78E	Erven
284	MKATSHANE	33	0	32°11'17.76S	27°58'22.05E	Erven
285	NQAMAKWE	33	0	32°12'3S	27°56'34.47E	Erven
286	NOBANDA	33	0	32°11'59.73S	27°54'40.63E	Erven
287	NOFOTYO	33	0	32°11'0.57S	27°51'51.37E	Erven
288	MANQALAZA	33	0	32°13'29.97S	28°4'30.42E	Erven
289	NOFOTYO	34	0	32°11'8.24S	27°51'52.6E	Erven
290	NQAMAKWE	34	0	32°12'3.94S	27°56'33.99E	Erven
291	NOBANDA	34	0	32°11'55.5S	27°54'43.55E	Erven
292	MANQALAZA	34	0	32°13'31.49S	28°4'20.14E	Erven
293	MKATSHANE	34	0	32°11'5.03S	27°58'21.78E	Erven
294	SOBEKWA	34	0	32°10'38.11S	27°55'8.79E	Erven
295	MPAHLENI	34	0	32°11'44.29S	28°1'30.88E	Erven
296	SOKAPASE	34	0	32°14'22.48S	28°1'5.26E	Erven
297	TYEKANA	34	0	32°13'18.8S	28°5'56.72E	Erven
298	MPAHLENI	35	0	32°11'49.1S	28°1'37.5E	Erven
299	NQAMAKWE	35	0	32°12'4.88S	27°56'33.51E	Erven
300	TYEKANA	35	0	32°13'20.72S	28°5'50.92E	Erven
301	NOBANDA	35	0	32°11'51.16S	27°54'46.54E	Erven
302	MKATSHANE	35	0	32°11'9.82S	27°58'25.49E	Erven
303	SOBEKWA	35	0	32°10'42.91S	27°55'4.88E	Erven
304	NOFOTYO	35	0	32°11'7.17S	27°51'58.66E	Erven
305	SOKAPASE	35	0	32°14'23.95S	28°0'57.1E	Erven
306	NOFOTYO	36	0	32°10'59.93S	27°52'7.16E	Erven
307	MKATSHANE	36	0	32°11'8.81S	27°58'29.56E	Erven
308	TYEKANA	36	0	32°13'22.39S	28°5'47.01E	Erven
309	MPAHLENI	36	0	32°11'42.56S	28°1'39.43E	Erven
310	SOBEKWA	36	0	32°10'45.2S	27°54'56.19E	Erven
311	SOKAPASE	36	0	32°14'17.74S	28°0'45.11E	Erven
312	NOBANDA	36	0	32°11'46.93S	27°54'49.46E	Erven
313	SOBEKWA	37	0	32°10'41.01S	27°54'47.15E	Erven
314	SOKAPASE	37	0	32°14'15.11S	28°0'51.9E	Erven
315	NOFOTYO	37	0	32°10'57.88S	27°52'15.55E	Erven
316	MPAHLENI	37	0	32°11'39.18S	28°1'43.44E	Erven
317	NOBANDA	37	0	32°11'43.21S	27°54'41.99E	Erven
318	MKATSHANE	37	0	32°11'5.57S	27°58'33.89E	Erven
319	TYEKANA	37	0	32°13'22.3S	28°5'42.69E	Erven
320	MBATSHA	37	0	32°12'35.89S	27°48'26.37E	Erven
321	SOBEKWA	38	0	32°10'36.89S	27°54'56.13E	Erven
322	MPAHLENI	38	0	32°11'35.15S	28°1'45.7E	Erven
323	MKATSHANE	38	0	32°11'1.87S	27°58'36.98E	Erven
324	TYEKANA	38	0	32°13'24.82S	28°5'36.96E	Erven
325	NQAMAKWE	38	0	32°12'6.22S	27°56'34.14E	Erven
326	SOKAPASE	38	0	32°14'12.88S	28°1'2.81E	Erven
327	NOFOTYO	38	0	32°11'3.12S	27°52'10.59E	Erven

328	NOBANDA	38	0	32°11'47.44S	27°54'39.08E	Erven
329	MBATSHA	39	0	32°12'31.01S	27°48'23.78E	Erven
330	SOKAPASE	39	0	32°14'6.69S	28°1'2.12E	Erven
331	NQAMAKWE	39	0	32°12'7.34S	27°56'33.14E	Erven
332	MPAHLENI	39	0	32°11'30.77S	28°1'46.74E	Erven
333	NOBANDA	39	0	32°11'51.78S	27°54'36.08E	Erven
334	MKATSHANE	39	0	32°11'0.43S	27°58'40.16E	Erven
335	TYEKANA	39	0	32°13'22.07S	28°5'31.31E	Erven
336	SOBEKWA	39	0	32°10'32.5S	27°54'54.12E	Erven
337	NOFOTYO	39	0	32°11'9.08S	27°52'6.01E	Erven
338	SOBEKWA	40	0	32°10'27.96S	27°54'50.09E	Erven
339	MBATSHA	40	0	32°12'31.27S	27°48'18.28E	Erven
340	SOKAPASE	40	0	32°14'3.75S	28°1'1.54E	Erven
341	NOFOTYO	40	0	32°11'15.88S	27°51'59.4E	Erven
342	NOBANDA	40	0	32°11'56.01S	27°54'33.16E	Erven
343	TYEKANA	40	0	32°13'28.95S	28°5'30.59E	Erven
344	MANQALAZA	40	0	32°13'25.63S	28°4'41.44E	Erven
345	NQAMAKWE	40	0	32°12'8.43S	27°56'34.18E	Erven
346	MKATSHANE	40	0	32°10'55.11S	27°58'25.52E	Erven
347	MPAHLENI	40	0	32°11'27.15S	28°1'47.91E	Erven
348	SOBEKWA	41	0	32°10'37.19S	27°54'42.16E	Erven
349	SOKAPASE	41	0	32°13'59.81S	28°0'58.8E	Erven
350	NQAMAKWE	41	0	32°12'8.63S	27°56'31.61E	Erven
351	MPAHLENI	41	0	32°11'22.53S	28°1'49.36E	Erven
352	MKATSHANE	41	0	32°10'53.12S	27°58'34.6E	Erven
353	TYEKANA	41	0	32°13'29.13S	28°5'24.09E	Erven
354	MANQALAZA	41	0	32°13'23.53S	28°4'46.39E	Erven
355	NOBANDA	41	0	32°12'0.35S	27°54'30.16E	Erven
356	NOFOTYO	41	0	32°11'15.55S	27°51'53.41E	Erven
357	MBATSHA	42	0	32°12'30.53S	27°48'11.44E	Erven
358	SOKAPASE	42	0	32°14'1.51S	28°1'8.23E	Erven
359	NQAMAKWE	42	0	32°12'9.27S	27°56'33.46E	Erven
360	NOFOTYO	42	0	32°11'17.82S	27°51'49.17E	Erven
361	MANQALAZA	42	0	32°13'19.72S	28°4'52.04E	Erven
362	TYEKANA	42	0	32°13'36.3S	28°5'22.35E	Erven
363	MKATSHANE	42	0	32°10'47.16S	27°58'35.57E	Erven
364	SOBEKWA	42	0	32°10'33.83S	27°54'37.35E	Erven
365	MPAHLENI	42	0	32°11'22.8S	28°1'41.8E	Erven
366	NOBANDA	42	0	32°12'4.58S	27°54'27.24E	Erven
367	SOBEKWA	43	0	32°10'30.31S	27°54'40.87E	Erven
368	NOBANDA	43	0	32°12'0.85S	27°54'19.78E	Erven
369	MPAHLENI	43	0	32°11'17.6S	28°1'45.25E	Erven
370	NOFOTYO	43	0	32°11'23.18S	27°52'4.07E	Erven
371	MKATSHANE	43	0	32°10'42.16S	27°58'32.76E	Erven
372	NQAMAKWE	43	0	32°12'2.97S	27°56'42.08E	Erven
373	SOKAPASE	43	0	32°13'59.82S	28°1'14.81E	Erven
374	TYEKANA	43	0	32°13'42.12S	28°5'17.27E	Erven
375	MANQALAZA	43	0	32°13'13.84S	28°4'57.65E	Erven
376	SOKAPASE	44	0	32°13'56.02S	28°1'10.33E	Erven
377	MPAHLENI	44	0	32°11'15.3S	28°1'38.1E	Erven
378	MAXEGWANAS	44	0	32°9'2.79S	28°2'32.99E	Erven
379	MANQALAZA	44	0	32°13'7.91S	28°5'4.53E	Erven
380	TYEKANA	44	0	32°13'47.72S	28°5'11.95E	Erven
381	NQAMAKWE	44	0	32°12'5.88S	27°56'38.98E	Erven
382	MKATSHANE	44	0	32°10'33.88S	27°58'30.98E	Erven
383	SOBEKWA	44	0	32°10'28.25S	27°54'34.08E	Erven
384	NOFOTYO	44	0	32°12'13.9S	27°51'32.16E	Erven
385	NOBANDA	44	0	32°11'56.62S	27°54'22.7E	Erven
386	NOBANDA	45	0	32°11'52.28S	27°54'25.69E	Erven
387	NQAMAKWE	45	0	32°12'7.31S	27°56'37.88E	Erven

388	NOFOTYO	45	0	32°12'29.87S	27°50'46.89E	Erven
389	MAXEGWANAS	45	0	32°9'4.28S	28°2'28.43E	Erven
390	MKATSHANE	45	0	32°10'26.59S	27°58'29.16E	Erven
391	SOBEKWA	45	0	32°10'23.69S	27°54'43.14E	Erven
392	SOKAPASE	45	0	32°13'53.22S	28°1'1.12E	Erven
393	MPAHLENI	45	0	32°11'11.47S	28°1'43.41E	Erven
394	TYEKANA	45	0	32°13'53.72S	28°5'6.14E	Erven
395	SOBEKWA	46	0	32°10'14.47S	27°54'49.71E	Erven
396	MPAHLENI	46	0	32°11'17.9S	28°2'2.7E	Erven
397	NOBANDA	46	0	32°11'48.04S	27°54'28.61E	Erven
398	NQAMAKWE	46	0	32°12'5.83S	27°56'41.02E	Erven
399	SOKAPASE	46	0	32°13'46.01S	28°1'7.59E	Erven
400	MKATSHANE	46	0	32°10'23.83S	27°58'24.45E	Erven
401	TYEKANA	46	0	32°13'50.4S	28°5'1.23E	Erven
402	NOFOTYO	46	0	32°12'19.59S	27°50'54.08E	Erven
403	MAXEGWANAS	46	0	32°9'13.56S	28°2'35.57E	Erven
404	SOBEKWA	47	0	32°10'5.94S	27°54'58.17E	Erven
405	SOKAPASE	47	0	32°13'24.97S	28°0'21.48E	Erven
406	MAXEGWANAS	47	0	32°9'9.18S	28°2'42.48E	Erven
407	TYEKANA	47	0	32°13'41.67S	28°5'7.85E	Erven
408	NQAMAKWE	47	0	32°12'5.54S	27°56'44.2E	Erven
409	MKATSHANE	47	0	32°10'21.08S	27°58'22.36E	Erven
410	NOFOTYO	47	0	32°12'22.26S	27°50'48.15E	Erven
411	MPAHLENI	47	0	32°11'22.44S	28°1'57.13E	Erven
412	NOBANDA	47	0	32°11'43.72S	27°54'31.6E	Erven
413	NQAMAKWE	48	0	32°12'8.5S	27°56'47.92E	Erven
414	MPAHLENI	48	0	32°11'28.82S	28°1'57.64E	Erven
415	NOBANDA	48	0	32°11'39.49S	27°54'34.53E	Erven
416	MAXEGWANAS	48	0	32°9'16.91S	28°2'47.72E	Erven
417	NOFOTYO	48	0	32°12'23.1S	27°50'40.79E	Erven
418	MKATSHANE	48	0	32°10'23.78S	27°58'14.06E	Erven
419	SOKAPASE	48	0	32°13'17.96S	28°0'19.58E	Erven
420	TYEKANA	48	0	32°13'37.85S	28°5'12.46E	Erven
421	SOBEKWA	48	0	32°10'3.09S	27°54'53.54E	Erven
422	SOBEKWA	49	0	32°10'7.43S	27°54'49.17E	Erven
423	MPAHLENI	49	0	32°11'33.73S	28°1'57.02E	Erven
424	MAXEGWANAS	49	0	32°9'24.49S	28°2'51.65E	Erven
425	SOKAPASE	49	0	32°13'13.28S	28°0'18.08E	Erven
426	NOFOTYO	49	0	32°12'17.76S	27°50'43.96E	Erven
427	TYEKANA	49	0	32°13'33.48S	28°5'18.14E	Erven
428	NQAMAKWE	49	0	32°12'9.9S	27°56'47.2E	Erven
429	MKATSHANE	49	0	32°10'18.63S	27°58'18.96E	Erven
430	NOBANDA	49	0	32°11'35.72S	27°54'27E	Erven
431	MKATSHANE	50	0	32°10'15.81S	27°58'13.47E	Erven
432	NOBANDA	50	0	32°11'39.95S	27°54'24.08E	Erven
433	MAXEGWANAS	50	0	32°9'32.07S	28°2'49.3E	Erven
434	MBATSHA	50	0	32°12'26.4S	27°47'58.91E	Erven
435	SOKAPASE	50	0	32°13'8.27S	28°0'17.39E	Erven
436	SOBEKWA	50	0	32°10'12.36S	27°54'43.74E	Erven
437	NOFOTYO	50	0	32°12'12.18S	27°50'48.51E	Erven
438	MPAHLENI	50	0	32°11'38.44S	28°1'55.51E	Erven
439	TYEKANA	50	0	32°13'20.01S	28°5'25.89E	Erven
440	NQAMAKWE	50	0	32°12'11.32S	27°56'46.49E	Erven
441	SOBEKWA	51	0	32°10'19.78S	27°54'35.17E	Erven
442	NOFOTYO	51	0	32°12'5.94S	27°50'50E	Erven
443	MPAHLENI	51	0	32°11'45.13S	28°1'49.82E	Erven
444	NOBANDA	51	0	32°11'44.29S	27°54'21.09E	Erven
445	MAXEGWANAS	51	0	32°9'34.83S	28°2'42.03E	Erven
446	TYEKANA	51	0	32°13'19.19S	28°5'19.67E	Erven
447	SOKAPASE	51	0	32°13'2.51S	28°0'17.04E	Erven

448	MKATSHANE	51	0	32°10'52.22S	27°58'47.04E	Erven
449	NQAMAKWE	51	0	32°12'12.47S	27°56'44.79E	Erven
450	SOBEKWA	52	0	32°10'10.98S	27°54'32.96E	Erven
451	MKATSHANE	52	0	32°10'58.18S	27°58'45.88E	Erven
452	NOFOTYO	52	0	32°12'4.44S	27°50'42.22E	Erven
453	MPAHLENI	52	0	32°12'3.78S	28°1'40.83E	Erven
454	SOKAPASE	52	0	32°12'57.71S	28°0'18.52E	Erven
455	TYEKANA	52	0	32°13'26.01S	28°5'16.89E	Erven
456	NOBANDA	52	0	32°11'48.52S	27°54'18.17E	Erven
457	MAXEGWANAS	52	0	32°9'23.75S	28°2'40.87E	Erven
458	NQAMAKWE	52	0	32°12'14.13S	27°56'45.06E	Erven
459	MKATSHANE	53	0	32°10'58.08S	27°58'52.47E	Erven
460	NOBANDA	53	0	32°11'52.86S	27°54'15.18E	Erven
461	MPAHLENI	53	0	32°12'8.35S	28°1'31.29E	Erven
462	MAXEGWANAS	53	0	32°9'13.15S	28°2'28.92E	Erven
463	NQAMAKWE	53	0	32°12'15.53S	27°56'44.35E	Erven
464	NOFOTYO	53	0	32°12'8.52S	27°50'38.79E	Erven
465	SOKAPASE	53	0	32°12'52.96S	28°0'19.01E	Erven
466	SOBEKWA	53	0	32°10'5.84S	27°54'40.81E	Erven
467	TYEKANA	53	0	32°13'29.94S	28°5'14.09E	Erven
468	NQAMAKWE	54	0	32°12'8.16S	27°56'42.18E	Erven
469	SOBEKWA	54	0	32°10'1.64S	27°54'47.23E	Erven
470	NOFOTYO	54	0	32°12'12.55S	27°50'36.93E	Erven
471	MPAHLENI	54	0	32°12'10.7S	28°1'42.67E	Erven
472	MAXEGWANAS	54	0	32°9'17.8S	28°2'27.15E	Erven
473	SOKAPASE	54	0	32°12'54.92S	28°0'12.48E	Erven
474	TYEKANA	54	0	32°13'35.09S	28°5'6.67E	Erven
475	NOBANDA	54	0	32°11'57.09S	27°54'12.25E	Erven
476	MKATSHANE	54	0	32°11'4.23S	27°58'49.41E	Erven
477	SOBEKWA	55	0	32°10'0.38S	27°54'38.71E	Erven
478	MKATSHANE	55	0	32°10'58.14S	27°58'57.35E	Erven
479	NOBANDA	55	0	32°11'53.38S	27°54'4.85E	Erven
480	MPAHLENI	55	0	32°12'16.21S	28°1'39.8E	Erven
481	SOKAPASE	55	0	32°13'0.65S	28°0'8.61E	Erven
482	TYEKANA	55	0	32°13'38.59S	28°5'0.85E	Erven
483	NOFOTYO	55	0	32°12'16.96S	27°50'32.47E	Erven
484	MAXEGWANAS	55	0	32°9'10.06S	28°2'21.26E	Erven
485	NQAMAKWE	55	0	32°12'8.35S	27°56'44E	Erven
486	NQAMAKWE	56	0	32°12'9.75S	27°56'42.26E	Erven
487	NOFOTYO	56	0	32°12'13.05S	27°50'26.5E	Erven
488	NOBANDA	56	0	32°11'49.15S	27°54'7.78E	Erven
489	MPAHLENI	56	0	32°12'13.3S	28°1'27.44E	Erven
490	MAXEGWANAS	56	0	32°9'18.13S	28°2'21.86E	Erven
491	TYEKANA	56	0	32°13'31.42S	28°5'3.72E	Erven
492	SOKAPASE	56	0	32°13'2.51S	28°0'0.59E	Erven
493	SOBEKWA	56	0	32°9'56.23S	27°54'37.02E	Erven
494	MKATSHANE	56	0	32°10'57.7S	27°59'2.44E	Erven
495	NQAMAKWE	57	0	32°12'11.17S	27°56'41.55E	Erven
496	MKATSHANE	57	0	32°10'50.17S	27°58'58.06E	Erven
497	MPAHLENI	57	0	32°12'18.71S	28°1'28.6E	Erven
498	SOKAPASE	57	0	32°13'8.49S	28°0'7.42E	Erven
499	NOFOTYO	57	0	32°12'18.19S	27°50'24.49E	Erven
500	SOBEKWA	57	0	32°10'5.03S	27°54'27.44E	Erven
501	NOBANDA	57	0	32°11'44.83S	27°54'10.77E	Erven
502	MAXEGWANAS	57	0	32°9'23.2S	28°2'18.78E	Erven
503	TYEKANA	57	0	32°13'27.37S	28°5'7.29E	Erven
504	SOBEKWA	58	0	32°10'3.58S	27°54'20.99E	Erven
505	NOFOTYO	58	0	32°12'10.29S	27°50'16.91E	Erven
506	MPAHLENI	58	0	32°12'23.03S	28°1'33.12E	Erven
507	MAXEGWANAS	58	0	32°9'25.56S	28°2'15.74E	Erven

508	TYEKANA	58	0	32°13'22.24S	28°5'10.19E	Erven
509	NQAMAKWE	58	0	32°12'12.58S	27°56'40.85E	Erven
510	MKATSHANE	58	0	32°10'46.39S	27°59'2.21E	Erven
511	SOKAPASE	58	0	32°13'14.26S	28°0'9.89E	Erven
512	NOBANDA	58	0	32°11'40.6S	27°54'13.68E	Erven
513	SOBEKWA	59	0	32°10'1.2S	27°54'14.06E	Erven
514	SOKAPASE	59	0	32°13'19.23S	28°0'13.14E	Erven
515	MKATSHANE	59	0	32°10'39.12S	27°59'1.52E	Erven
516	NOBANDA	59	0	32°11'36.26S	27°54'16.68E	Erven
517	MAXEGWANAS	59	0	32°9'27.59S	28°2'12.4E	Erven
518	NQAMAKWE	59	0	32°12'14S	27°56'40.14E	Erven
519	TYEKANA	59	0	32°13'15.38S	28°5'15.8E	Erven
520	MPAHLENI	59	0	32°12'25S	28°1'39.27E	Erven
521	NOFOTYO	59	0	32°12'2.64S	27°50'12.46E	Erven
522	SOBEKWA	60	0	32°9'56.38S	27°54'18.53E	Erven
523	MPAHLENI	60	0	32°12'26.52S	28°1'46.36E	Erven
524	NOFOTYO	60	0	32°11'59.27S	27°50'21.74E	Erven
525	NQAMAKWE	60	0	32°12'9.24S	27°56'38.67E	Erven
526	TYEKANA	60	0	32°13'12.59S	28°5'10.69E	Erven
527	SOKAPASE	60	0	32°13'26.31S	28°0'16.01E	Erven
528	NOBANDA	60	0	32°11'32.03S	27°54'19.6E	Erven
529	MKATSHANE	60	0	32°10'39.8S	27°59'8.27E	Erven
530	MAXEGWANAS	60	0	32°9'30.12S	28°2'9.51E	Erven
531	MKATSHANE	61	0	32°10'47.49S	27°59'9.11E	Erven
532	MPAHLENI	61	0	32°12'27.4S	28°1'52.33E	Erven
533	NOBANDA	61	0	32°11'28.28S	27°54'12.07E	Erven
534	MAXEGWANAS	61	0	32°9'33.38S	28°2'7.49E	Erven
535	NQAMAKWE	61	0	32°12'11S	27°56'37.03E	Erven
536	MFENYANA	61	0	32°13'26.27S	28°6'33.7E	Erven
537	TYEKANA	61	0	32°13'17.84S	28°5'3.61E	Erven
538	SOBEKWA	61	0	32°9'53.61S	27°54'24.09E	Erven
539	SOKAPASE	61	0	32°13'34.58S	28°0'19.03E	Erven
540	NOFOTYO	61	0	32°11'53.62S	27°50'30.46E	Erven
541	SOBEKWA	62	0	32°9'49S	27°54'28.05E	Erven
542	NOFOTYO	62	0	32°11'50.93S	27°50'23.12E	Erven
543	NOBANDA	62	0	32°11'32.51S	27°54'9.14E	Erven
544	TYEKANA	62	0	32°13'22.61S	28°5'0.82E	Erven
545	SOKAPASE	62	0	32°13'41.05S	28°0'21.68E	Erven
546	MPAHLENI	62	0	32°12'25.42S	28°2'0.66E	Erven
547	MKATSHANE	62	0	32°11'2.08S	27°59'21.21E	Erven
548	MAXEGWANAS	62	0	32°9'36.62S	28°2'5.65E	Erven
549	MANQALAZA	62	0	32°13'39.26S	28°6'11.34E	Erven
550	MKATSHANE	63	0	32°10'52.08S	27°59'39.33E	Erven
551	MAXEGWANAS	63	0	32°9'40.48S	28°2'5.75E	Erven
552	MPAHLENI	63	0	32°12'21.29S	28°1'55.49E	Erven
553	TYEKANA	63	0	32°13'26.42S	28°4'57.92E	Erven
554	MANQALAZA	63	0	32°13'45.02S	28°6'9.65E	Erven
555	SOBEKWA	63	0	32°9'51.9S	27°54'34.67E	Erven
556	SOKAPASE	63	0	32°13'36.42S	28°0'13.77E	Erven
557	NOFOTYO	63	0	32°11'46.72S	27°50'26.95E	Erven
558	NOBANDA	63	0	32°11'36.88S	27°54'6.22E	Erven
559	NOFOTYO	64	0	32°11'44.15S	27°50'19.09E	Erven
560	MAXEGWANAS	64	0	32°9'43.24S	28°2'5.64E	Erven
561	SOKAPASE	64	0	32°13'20.74S	28°0'5.39E	Erven
562	NQAMAKWE	64	0	32°12'10.71S	27°56'35.06E	Erven
563	MKATSHANE	64	0	32°10'52.19S	27°59'49.6E	Erven
564	MANQALAZA	64	0	32°13'47.34S	28°6'4.15E	Erven
565	TYEKANA	64	0	32°13'29.24S	28°4'54.74E	Erven
566	SOBEKWA	64	0	32°9'52.23S	27°54'43.45E	Erven
567	MPAHLENI	64	0	32°12'16.1S	28°1'59.04E	Erven



568	NOBANDA	64	0	32°11'41.11S	27°54'3.29E	Erven
569	SOBEKWA	65	0	32°9'47.86S	27°54'36.37E	Erven
570	MANQALAZA	65	0	32°13'50.88S	28°6'0.85E	Erven
571	NOFOTYO	65	0	32°11'35.04S	27°50'20.46E	Erven
572	SOKAPASE	65	0	32°13'20.31S	28°0'1.72E	Erven
573	NOBANDA	65	0	32°11'45.42S	27°54'0.32E	Erven
574	MKATSHANE	65	0	32°10'55.58S	27°59'58.43E	Erven
575	MPAHLENI	65	0	32°12'17.65S	28°2'6.3E	Erven
576	MAXEGWANAS	65	0	32°9'46.11S	28°2'6.16E	Erven
577	NQAMAKWE	65	0	32°12'11.95S	27°56'34.01E	Erven
578	TYEKANA	65	0	32°13'30.42S	28°4'47.75E	Erven
579	MANQALAZA	66	0	32°13'54.96S	28°5'58.08E	Erven
580	SOKAPASE	66	0	32°13'16.43S	27°59'57.99E	Erven
581	NOBANDA	66	0	32°11'49.65S	27°53'57.4E	Erven
582	MKATSHANE	66	0	32°10'56.98S	27°59'45.41E	Erven
583	MPAHLENI	66	0	32°12'24.68S	28°2'7.87E	Erven
584	TYEKANA	66	0	32°13'38.21S	28°4'56.7E	Erven
585	SOBEKWA	66	0	32°9'45.35S	27°54'39.89E	Erven
586	NOFOTYO	66	0	32°11'38.33S	27°50'15.36E	Erven
587	MAXEGWANAS	66	0	32°9'48.88S	28°2'6.94E	Erven
588	NQAMAKWE	66	0	32°12'12.69S	27°56'36.17E	Erven
589	SOBEKWA	67	0	32°9'44.98S	27°54'44.14E	Erven
590	NOFOTYO	67	0	32°11'37S	27°50'9.09E	Erven
591	MANQALAZA	67	0	32°13'58.89S	28°5'55.74E	Erven
592	TYEKANA	67	0	32°13'38.71S	28°4'54.43E	Erven
593	SOKAPASE	67	0	32°13'10.95S	27°59'53.72E	Erven
594	MPAHLENI	67	0	32°12'23.44S	28°2'19.39E	Erven
595	NOBANDA	67	0	32°11'45.91S	27°53'49.87E	Erven
596	MKATSHANE	67	0	32°10'58.91S	27°59'44.09E	Erven
597	NQAMAKWE	67	0	32°12'10.7S	27°56'31.23E	Erven
598	MAXEGWANAS	67	0	32°9'51.68S	28°2'7.29E	Erven
599	SOBEKWA	68	0	32°9'43.44S	27°54'48.55E	Erven
600	MANQALAZA	68	0	32°13'45.16S	28°5'46.98E	Erven
601	MKATSHANE	68	0	32°11'0.88S	27°59'44.03E	Erven
602	MAXEGWANAS	68	0	32°9'54.54S	28°2'7.65E	Erven
603	SOKAPASE	68	0	32°13'5.91S	27°59'50.2E	Erven
604	NQAMAKWE	68	0	32°12'7.71S	27°56'27.51E	Erven
605	NOBANDA	68	0	32°11'41.67S	27°53'52.78E	Erven
606	NOFOTYO	68	0	32°11'33.94S	27°50'0.93E	Erven
607	MPAHLENI	68	0	32°12'28.9S	28°2'11.47E	Erven
608	TYEKANA	68	0	32°13'40.13S	28°4'51.49E	Erven
609	MPETAS	68	0	32°13'58.94S	28°7'13.06E	Erven
610	MPETAS	69	0	32°14'3.2S	28°7'12.07E	Erven
611	MANQALAZA	69	0	32°13'43.65S	28°5'52.11E	Erven
612	NOBANDA	69	0	32°11'37.34S	27°53'55.77E	Erven
613	MPAHLENI	69	0	32°12'32.03S	28°1'59.22E	Erven
614	TYEKANA	69	0	32°13'51.05S	28°4'53.57E	Erven
615	SOBEKWA	69	0	32°9'46.3S	27°55'0.22E	Erven
616	NQAMAKWE	69	0	32°12'8.37S	27°56'28.24E	Erven
617	SOKAPASE	69	0	32°13'24.01S	27°59'51.19E	Erven
618	MKATSHANE	69	0	32°11'3.74S	27°59'44.83E	Erven
619	NOFOTYO	69	0	32°11'41.67S	27°49'58.07E	Erven
620	MAXEGWANAS	69	0	32°9'57.45S	28°2'8.11E	Erven
621	MANQALAZA	70	0	32°13'40.49S	28°5'56.52E	Erven
622	MKATSHANE	70	0	32°11'10S	27°59'46.68E	Erven
623	MAXEGWANAS	70	0	32°10'0.32S	28°2'8.78E	Erven
624	SOKAPASE	70	0	32°13'31.67S	27°59'49.77E	Erven
625	NQAMAKWE	70	0	32°12'9.09S	27°56'29.05E	Erven
626	MPETAS	70	0	32°14'6.88S	28°7'20.84E	Erven
627	MPAHLENI	70	0	32°12'33.91S	28°1'48E	Erven

628	NOBANDA	70	0	32°11'33.11S	27°53'58.69E	Erven
629	TYEKANA	70	0	32°13'44.59S	28°4'48.37E	Erven
630	NOFOTYO	70	0	32°11'37.14S	27°49'52.76E	Erven
631	SOBEKWA	70	0	32°9'50.06S	27°55'6.14E	Erven
632	NOBANDA	71	0	32°11'27.69S	27°54'4.34E	Erven
633	MKATSHANE	71	0	32°11'7.24S	27°59'56.49E	Erven
634	MPAHLENI	71	0	32°12'41.23S	28°1'45.17E	Erven
635	NOFOTYO	71	0	32°11'28.58S	27°49'49.39E	Erven
636	SOKAPASE	71	0	32°13'35.75S	27°59'50.94E	Erven
637	SOBEKWA	71	0	32°9'51.82S	27°55'11.77E	Erven
638	NQAMAKWE	71	0	32°12'9.67S	27°56'27.81E	Erven
639	MPETAS	71	0	32°14'9.85S	28°7'29.24E	Erven
640	TYEKANA	71	0	32°13'36.89S	28°4'42.07E	Erven
641	MAXEGWANAS	71	0	32°10'6.43S	28°2'9.93E	Erven
642	MAXEGWANAS	72	0	32°10'10.54S	28°2'6.37E	Erven
643	MPAHLENI	72	0	32°12'42.15S	28°1'51.92E	Erven
644	NOFOTYO	72	0	32°11'32.94S	27°49'41.36E	Erven
645	TYEKANA	72	0	32°13'44.03S	28°4'42.06E	Erven
646	SOKAPASE	72	0	32°13'39.25S	27°59'47.12E	Erven
647	MPETAS	72	0	32°14'20.27S	28°7'40.13E	Erven
648	NOBANDA	72	0	32°11'26.54S	27°53'57.25E	Erven
649	MKATSHANE	72	0	32°11'14.41S	27°59'56.06E	Erven
650	NQAMAKWE	72	0	32°12'11.09S	27°56'27.08E	Erven
651	SOBEKWA	73	0	32°9'57.82S	27°55'16.46E	Erven
652	NQAMAKWE	73	0	32°12'13.94S	27°56'25.9E	Erven
653	MPETAS	73	0	32°14'17.62S	28°7'24.25E	Erven
654	MAXEGWANAS	73	0	32°10'17.03S	28°2'1.97E	Erven
655	NOBANDA	73	0	32°11'29.3S	27°53'51.04E	Erven
656	SOKAPASE	73	0	32°13'39.94S	27°59'38.39E	Erven
657	MPAHLENI	73	0	32°12'44.21S	28°2'2.03E	Erven
658	MKATSHANE	73	0	32°11'18.63S	27°59'57.93E	Erven
659	NOFOTYO	73	0	32°11'32.21S	27°49'30.59E	Erven
660	TYEKANA	73	0	32°13'47.63S	28°4'39.69E	Erven
661	NOBANDA	74	0	32°11'33.53S	27°53'48.12E	Erven
662	MPETAS	74	0	32°14'13.23S	28°7'19E	Erven
663	SOKAPASE	74	0	32°13'33.47S	27°59'25.37E	Erven
664	NOFOTYO	74	0	32°11'35.59S	27°49'35.93E	Erven
665	TYEKANA	74	0	32°13'51.77S	28°4'37.03E	Erven
666	NQAMAKWE	74	0	32°12'15.92S	27°56'25.95E	Erven
667	MPAHLENI	74	0	32°12'36.79S	28°2'2.48E	Erven
668	SOBEKWA	74	0	32°9'54.66S	27°55'22.51E	Erven
669	MAXEGWANAS	74	0	32°10'14.66S	28°1'55.78E	Erven
670	MKATSHANE	74	0	32°11'17.93S	27°59'46.83E	Erven
671	SOBEKWA	75	0	32°9'54.48S	27°55'27.91E	Erven
672	NQAMAKWE	75	0	32°12'17S	27°56'25.23E	Erven
673	MPAHLENI	75	0	32°12'39.47S	28°2'11.19E	Erven
674	MPETAS	75	0	32°14'6.37S	28°7'10.14E	Erven
675	MAXEGWANAS	75	0	32°10'9.89S	28°1'55.75E	Erven
676	SOKAPASE	75	0	32°13'38.14S	27°59'28.7E	Erven
677	MKATSHANE	75	0	32°11'11.73S	27°59'39.88E	Erven
678	TYEKANA	75	0	32°13'57.05S	28°4'46.41E	Erven
679	NOBANDA	75	0	32°11'37.85S	27°53'45.14E	Erven
680	NOFOTYO	75	0	32°11'39.93S	27°49'40.41E	Erven
681	SOBEKWA	76	0	32°9'53.98S	27°55'33.18E	Erven
682	NOBANDA	76	0	32°11'42.08S	27°53'42.21E	Erven
683	NQAMAKWE	76	0	32°12'15.63S	27°56'30.13E	Erven
684	MPAHLENI	76	0	32°12'38.04S	28°2'15.54E	Erven
685	MPETAS	76	0	32°14'8.17S	28°7'5.32E	Erven
686	NOFOTYO	76	0	32°11'39.99S	27°49'30.92E	Erven
687	MKATSHANE	76	0	32°11'16.28S	27°59'36.61E	Erven

688	SOKAPASE	76	0	32°14'30.57S	27°58'39.95E	Erven
689	TYEKANA	76	0	32°13'59.29S	28°4'33.17E	Erven
690	MAXEGWANAS	76	0	32°10'5.92S	28°1'54.77E	Erven
691	MPAHLENI	77	0	32°12'36.34S	28°2'18.73E	Erven
692	NOFOTYO	77	0	32°11'38.99S	27°49'21.78E	Erven
693	SOKAPASE	77	0	32°13'43.92S	27°59'31.9E	Erven
694	MKATSHANE	77	0	32°11'20.56S	27°59'41.88E	Erven
695	MAXEGWANAS	77	0	32°10'2.71S	28°1'53.09E	Erven
696	TYEKANA	77	0	32°13'56.57S	28°4'26.72E	Erven
697	NQAMAKWE	77	0	32°12'14.89S	27°56'31.1E	Erven
698	MPETAS	77	0	32°14'14.21S	28°6'59.73E	Erven
699	NOBANDA	77	0	32°11'38.36S	27°53'34.76E	Erven
700	MPAHLENI	78	0	32°12'32.55S	28°2'21.37E	Erven
701	NOBANDA	78	0	32°11'34.12S	27°53'37.68E	Erven
702	NQAMAKWE	78	0	32°12'17.17S	27°56'35.57E	Erven
703	MPETAS	78	0	32°14'16.85S	28°7'30.31E	Erven
704	MAXEGWANAS	78	0	32°9'59.28S	28°1'52.53E	Erven
705	TYEKANA	78	0	32°13'54.25S	28°4'24.17E	Erven
706	SOKAPASE	78	0	32°13'45.92S	27°59'42.78E	Erven
707	NOFOTYO	78	0	32°11'45.29S	27°49'24.53E	Erven
708	MKATSHANE	78	0	32°11'58.62S	27°58'38.82E	Erven
709	MFENYANA	78	0	32°13'27.76S	28°6'44.69E	Erven
710	SOKAPASE	79	0	32°13'45.17S	27°59'50.98E	Erven
711	NOFOTYO	79	0	32°11'50.46S	27°49'29.36E	Erven
712	NOBANDA	79	0	32°11'29.19S	27°53'43.43E	Erven
713	MKATSHANE	79	0	32°12'2.6S	27°58'38.52E	Erven
714	MFENYANA	79	0	32°13'22.65S	28°6'30.1E	Erven
715	NQAMAKWE	79	0	32°12'17.69S	27°56'43.26E	Erven
716	MAXEGWANAS	79	0	32°9'55.73S	28°1'52.18E	Erven
717	MPETAS	79	0	32°14'30.09S	28°7'47.55E	Erven
718	MPAHLENI	79	0	32°12'24.04S	28°2'29.17E	Erven
719	TYEKANA	79	0	32°13'44.69S	28°4'30.3E	Erven
720	MPAHLENI	80	0	32°11'52.89S	28°2'28.89E	Erven
721	NQAMAKWE	80	0	32°12'19.11S	27°56'42.54E	Erven
722	SOKAPASE	80	0	32°13'34.28S	27°59'59.94E	Erven
723	MPETAS	80	0	32°14'35.69S	28°7'44.52E	Erven
724	MKATSHANE	80	0	32°12'6.16S	27°58'38.77E	Erven
725	MAXEGWANAS	80	0	32°9'51.92S	28°1'53.17E	Erven
726	MFENYANA	80	0	32°13'24.38S	28°6'41.78E	Erven
727	TYEKANA	80	0	32°13'45.6S	28°4'23.31E	Erven
728	NOFOTYO	80	0	32°11'46.27S	27°49'33.83E	Erven
729	NOBANDA	80	0	32°11'28.21S	27°53'36.97E	Erven
730	SOKAPASE	81	0	32°13'36.76S	28°0'6.23E	Erven
731	NOFOTYO	81	0	32°11'46.09S	27°49'39.71E	Erven
732	NOBANDA	81	0	32°11'30.46S	27°53'30.24E	Erven
733	TYEKANA	81	0	32°13'49.99S	28°4'21.85E	Erven
734	NQAMAKWE	81	0	32°12'20.51S	27°56'41.83E	Erven
735	MAXEGWANAS	81	0	32°9'48.36S	28°1'51.5E	Erven
736	MPETAS	81	0	32°14'36.38S	28°7'39.08E	Erven
737	MPAHLENI	81	0	32°12'0.02S	28°2'32.11E	Erven
738	MKATSHANE	81	0	32°12'10.27S	27°58'39.85E	Erven
739	MFENYANA	81	0	32°13'20.57S	28°6'41.67E	Erven
740	MPAHLENI	82	0	32°12'8.08S	28°2'35.94E	Erven
741	MPETAS	82	0	32°14'45.15S	28°7'42.34E	Erven
742	NQAMAKWE	82	0	32°12'21.92S	27°56'41.11E	Erven
743	MKATSHANE	82	0	32°12'14.13S	27°58'43.29E	Erven
744	MAXEGWANAS	82	0	32°9'44.64S	28°1'50.64E	Erven
745	MFENYANA	82	0	32°13'19.53S	28°6'28.97E	Erven
746	SOKAPASE	82	0	32°13'28.61S	28°0'4.72E	Erven
747	NOFOTYO	82	0	32°11'44.66S	27°49'46.06E	Erven

748	NOBANDA	82	0	32°11'34.64S	27°53'27.28E	Erven
749	TYEKANA	82	0	32°13'55.5S	28°4'18.27E	Erven
750	MPAHLANI	83	0	32°12'15.1S	28°2'36.95E	Erven
751	MAXEGWANAS	83	0	32°9'40.72S	28°1'50.93E	Erven
752	NOFOTYO	83	0	32°11'50.51S	27°49'50.37E	Erven
753	MPETAS	83	0	32°14'38.6S	28°7'35.97E	Erven
754	NQAMAKWE	83	0	32°12'15.69S	27°56'36.46E	Erven
755	NOBANDA	83	0	32°11'30.49S	27°53'20.75E	Erven
756	TYEKANA	83	0	32°13'46.17S	28°4'16.88E	Erven
757	MKATSHANE	83	0	32°12'17.22S	27°58'46.22E	Erven
758	SOKAPASE	83	0	32°13'42.75S	28°0'9.56E	Erven
759	SOBEKWA	84	0	32°9'23.86S	27°54'43.94E	Erven
760	MKATSHANE	84	0	32°12'19.93S	27°58'48.58E	Erven
761	MAXEGWANAS	84	0	32°9'36.01S	28°1'50.52E	Erven
762	MPAHLANI	84	0	32°12'29.09S	28°2'35.02E	Erven
763	NOFOTYO	84	0	32°11'49.51S	27°50'0.52E	Erven
764	NOBANDA	84	0	32°13'36.38S	27°53'41.26E	Erven
765	MPETAS	84	0	32°14'40.5S	28°7'30.49E	Erven
766	TYEKANA	84	0	32°13'48.42S	28°4'11.26E	Erven
767	MPAHLANI	85	0	32°12'32.8S	28°2'39.38E	Erven
768	MKATSHANE	85	0	32°12'21.78S	27°58'51.53E	Erven
769	NOFOTYO	85	0	32°11'55.66S	27°49'55.98E	Erven
770	MPETAS	85	0	32°14'45.75S	28°7'21.1E	Erven
771	TYEKANA	85	0	32°13'53.04S	28°4'8.92E	Erven
772	SOBEKWA	85	0	32°9'29.61S	27°54'41.79E	Erven
773	MAXEGWANAS	85	0	32°9'32.84S	28°1'51.58E	Erven
774	SOBEKWA	86	0	32°9'35.72S	27°54'44.31E	Erven
775	MAXEGWANAS	86	0	32°9'30.08S	28°1'53.35E	Erven
776	NOFOTYO	86	0	32°11'56.79S	27°49'47.9E	Erven
777	TYEKANA	86	0	32°13'56.4S	28°4'9.32E	Erven
778	NQAMAKWE	86	0	32°12'10.48S	27°56'50.59E	Erven
779	MPAHLANI	86	0	32°12'33.65S	28°2'29.31E	Erven
780	MKATSHANE	86	0	32°12'23.51S	27°58'54.44E	Erven
781	MPETAS	86	0	32°14'52.27S	28°7'13.64E	Erven
782	MPAHLANI	87	0	32°12'39.4S	28°2'31.22E	Erven
783	SOKAPASE	87	0	32°14'40.82S	27°58'48.71E	Erven
784	MKATSHANE	87	0	32°12'25.08S	27°58'57.73E	Erven
785	NQAMAKWE	87	0	32°12'11.54S	27°56'49.63E	Erven
786	NOFOTYO	87	0	32°11'56.38S	27°49'41.65E	Erven
787	MPETAS	87	0	32°14'58.79S	28°7'11.62E	Erven
788	TYEKANA	87	0	32°14'0.22S	28°4'7.41E	Erven
789	MAXEGWANAS	87	0	32°9'27.36S	28°1'55.09E	Erven
790	MAXEGWANAS	88	0	32°9'24.41S	28°1'56.51E	Erven
791	MPAHLANI	88	0	32°12'39.99S	28°2'37.45E	Erven
792	MPETAS	88	0	32°14'57.91S	28°7'5.58E	Erven
793	TYEKANA	88	0	32°14'3.65S	28°4'4.94E	Erven
794	MKATSHANE	88	0	32°12'26.99S	27°59'1.04E	Erven
795	NQAMAKWE	88	0	32°12'11.92S	27°56'50.68E	Erven
796	SOBEKWA	88	0	32°9'38.62S	27°54'34.83E	Erven
797	SOKAPASE	88	0	32°14'14.15S	28°0'36.67E	Erven
798	NOFOTYO	88	0	32°11'55.13S	27°49'30.93E	Erven
799	SOBEKWA	89	0	32°9'38.33S	27°54'27E	Erven
800	MAXEGWANAS	89	0	32°9'22.01S	28°1'58.98E	Erven
801	SOKAPASE	89	0	32°14'15.34S	28°0'19.89E	Erven
802	MKATSHANE	89	0	32°12'28.98S	27°59'4.62E	Erven
803	NOFOTYO	89	0	32°11'59.91S	27°49'30.45E	Erven
804	TYEKANA	89	0	32°13'53.59S	28°3'50.98E	Erven
805	NQAMAKWE	89	0	32°12'12.24S	27°56'51.75E	Erven
806	MPAHLANI	89	0	32°12'39.92S	28°2'42.61E	Erven
807	MPETAS	89	0	32°14'50.18S	28°7'5.35E	Erven

808	MPETAS	90	0	32°14'46.02S	28°7'9.96E	Erven
809	NQAMAKWE	90	0	32°12'13.53S	27°56'48.63E	Erven
810	MPAHLANI	90	0	32°12'45.62S	28°2'27.19E	Erven
811	NOFOTYO	90	0	32°12'4.49S	27°49'29.21E	Erven
812	SOBEKWA	90	0	32°9'44.75S	27°54'28.46E	Erven
813	SOKAPASE	90	0	32°14'11.37S	28°0'7.88E	Erven
814	MAXEGWANAS	90	0	32°9'19.95S	28°2'9.36E	Erven
815	TYEKANA	90	0	32°13'45.35S	28°3'53.17E	Erven
816	MKATSHANE	90	0	32°12'31.19S	27°59'8.53E	Erven
817	SOBEKWA	91	0	32°9'47.47S	27°54'15.13E	Erven
818	MAXEGWANAS	91	0	32°9'18.37S	28°2'0.49E	Erven
819	SOKAPASE	91	0	32°14'11.89S	28°0'1.04E	Erven
820	MKATSHANE	91	0	32°12'32.38S	27°59'14.74E	Erven
821	TYEKANA	91	0	32°13'45.57S	28°3'47.96E	Erven
822	NQAMAKWE	91	0	32°12'13.89S	27°56'49.68E	Erven
823	MPAHLANI	91	0	32°12'50.66S	28°2'33.45E	Erven
824	MPETAS	91	0	32°14'42.61S	28°7'13.01E	Erven
825	NOFOTYO	91	0	32°12'5.8S	27°49'20.64E	Erven
826	SOBEKWA	92	0	32°9'43.94S	27°54'6.03E	Erven
827	SOKAPASE	92	0	32°14'11.7S	27°59'56.66E	Erven
828	NQAMAKWE	92	0	32°12'14.31S	27°56'50.69E	Erven
829	TYEKANA	92	0	32°13'49.48S	28°3'58.65E	Erven
830	MAXEGWANAS	92	0	32°9'15.26S	28°2'4.25E	Erven
831	MPAHLANI	92	0	32°12'49.3S	28°2'41.27E	Erven
832	NOFOTYO	92	0	32°12'25.09S	27°49'43.16E	Erven
833	MKATSHANE	92	0	32°12'32.11S	27°59'21.58E	Erven
834	MPETAS	92	0	32°14'38.89S	28°7'16.55E	Erven
835	MPETAS	93	0	32°14'34.66S	28°7'20.97E	Erven
836	MAXEGWANAS	93	0	32°9'12.12S	28°2'7.22E	Erven
837	NOFOTYO	93	0	32°12'25.45S	27°49'34.66E	Erven
838	SOBEKWA	93	0	32°9'40.72S	27°54'12.6E	Erven
839	MPAHLANI	93	0	32°12'49.33S	28°2'52.57E	Erven
840	MKATSHANE	93	0	32°12'32.15S	27°59'27E	Erven
841	NQAMAKWE	93	0	32°12'14.86S	27°56'51.82E	Erven
842	SOKAPASE	93	0	32°14'17.14S	27°59'44.22E	Erven
843	TYEKANA	93	0	32°13'45.84S	28°4'1.45E	Erven
844	MPETAS	94	0	32°14'30.87S	28°7'31.83E	Erven
845	MAXEGWANAS	94	0	32°9'4.94S	28°2'10.37E	Erven
846	SOKAPASE	94	0	32°14'18.44S	27°59'48.45E	Erven
847	NQAMAKWE	94	0	32°12'19.6S	27°56'49.11E	Erven
848	SOBEKWA	94	0	32°9'36.86S	27°54'7.01E	Erven
849	MKATSHANE	94	0	32°12'30.75S	27°59'31.99E	Erven
850	TYEKANA	94	0	32°13'41.09S	28°4'4.44E	Erven
851	NOFOTYO	94	0	32°12'20.37S	27°49'34.16E	Erven
852	NOFOTYO	95	0	32°12'18.17S	27°49'38.69E	Erven
853	NOBANDA	95	0	32°13'34.83S	27°53'32.64E	Erven
854	TYEKANA	95	0	32°13'36.93S	28°3'54.61E	Erven
855	SOKAPASE	95	0	32°14'19.42S	27°59'53.97E	Erven
856	NQAMAKWE	95	0	32°12'20.57S	27°56'48.69E	Erven
857	MKATSHANE	95	0	32°12'28.11S	27°59'36.65E	Erven
858	MPETAS	95	0	32°14'27.45S	28°7'36.87E	Erven
859	SOBEKWA	95	0	32°9'31.48S	27°54'11.8E	Erven
860	MPETAS	96	0	32°14'29.17S	28°7'22.6E	Erven
861	SOKAPASE	96	0	32°14'19.94S	28°0'0.95E	Erven
862	NOFOTYO	96	0	32°12'16.67S	27°49'43.7E	Erven
863	NQAMAKWE	96	0	32°12'21.58S	27°56'48.25E	Erven
864	MKATSHANE	96	0	32°12'25.52S	27°59'41.32E	Erven
865	TYEKANA	96	0	32°13'35.05S	28°3'49.61E	Erven
866	SOBEKWA	96	0	32°9'28.94S	27°54'18.73E	Erven
867	NOBANDA	96	0	32°13'30.17S	27°53'28.52E	Erven



868	MPETAS	97	0	32°14'25.61S	28°7'21.25E	Erven
869	SOBEKWA	97	0	32°9'26.91S	27°54'23.63E	Erven
870	SOKAPASE	97	0	32°14'20.9S	28°0'6.76E	Erven
871	TYEKANA	97	0	32°13'33.99S	28°3'45.4E	Erven
872	NOBANDA	97	0	32°13'33.57S	27°53'10.18E	Erven
873	NQAMAKWE	97	0	32°12'22.65S	27°56'47.79E	Erven
874	NOFOTYO	97	0	32°12'12.31S	27°49'35.85E	Erven
875	MKATSHANE	97	0	32°12'22.91S	27°59'46.01E	Erven
876	NOFOTYO	98	0	32°12'14.68S	27°49'28.51E	Erven
877	MKATSHANE	98	0	32°12'19.22S	27°59'50.42E	Erven
878	NQAMAKWE	98	0	32°12'24.24S	27°56'47.79E	Erven
879	SOKAPASE	98	0	32°14'21.64S	28°0'11.99E	Erven
880	TYEKANA	98	0	32°13'44.63S	28°3'42.74E	Erven
881	SOBEKWA	98	0	32°9'23.21S	27°54'26.81E	Erven
882	MPETAS	98	0	32°14'21.23S	28°7'17.52E	Erven
883	MPETAS	99	0	32°14'15.83S	28°7'10.83E	Erven
884	NQAMAKWE	99	0	32°12'23.75S	27°56'46.46E	Erven
885	SOBEKWA	99	0	32°9'18.22S	27°54'29.66E	Erven
886	SOKAPASE	99	0	32°14'24.69S	28°0'17.29E	Erven
887	TYEKANA	99	0	32°13'52.05S	28°3'41.88E	Erven
888	NOFOTYO	99	0	32°12'5.77S	27°49'11.78E	Erven
889	MKATSHANE	99	0	32°12'16.78S	27°59'36.96E	Erven
890	SOKAPASE	100	0	32°14'19.6S	28°0'23.28E	Erven
891	NOFOTYO	100	0	32°12'9.05S	27°48'59.4E	Erven
892	SOBEKWA	100	0	32°9'12.57S	27°54'30.22E	Erven
893	TYEKANA	100	0	32°13'59.41S	28°3'49.31E	Erven
894	NQAMAKWE	100	0	32°12'23.29S	27°56'45.23E	Erven
895	MPETAS	100	0	32°14'22.51S	28°7'6.26E	Erven
896	MKATSHANE	100	0	32°12'13.21S	27°59'38.77E	Erven
897	MPETAS	101	0	32°14'28.29S	28°7'53.75E	Erven
898	SOKAPASE	101	0	32°14'40.1S	28°0'38.75E	Erven
899	NQAMAKWE	101	0	32°12'22.84S	27°56'44.01E	Erven
900	NOFOTYO	101	0	32°12'15.6S	27°48'49.92E	Erven
901	MKATSHANE	101	0	32°12'9.62S	27°59'41.12E	Erven
902	TYEKANA	101	0	32°14'6.58S	28°3'49.8E	Erven
903	NOBANDA	101	0	32°13'19.05S	27°53'6.24E	Erven
904	SOBEKWA	101	0	32°9'17.02S	27°54'23.26E	Erven
905	MPETAS	102	0	32°14'28.4S	28°7'1.44E	Erven
906	NOFOTYO	102	0	32°12'10.63S	27°48'45.5E	Erven
907	SOBEKWA	102	0	32°9'21.44S	27°54'16.52E	Erven
908	NQAMAKWE	102	0	32°12'21.73S	27°56'45.29E	Erven
909	SOKAPASE	102	0	32°14'47.72S	28°0'41.36E	Erven
910	TYEKANA	102	0	32°14'11.81S	28°3'41.08E	Erven
911	MKATSHANE	102	0	32°11'46.5S	28°0'3.55E	Erven
912	NOBANDA	102	0	32°13'12.39S	27°53'7.17E	Erven
913	SOKAPASE	103	0	32°14'54.69S	28°0'41.71E	Erven
914	NQAMAKWE	103	0	32°12'20.68S	27°56'45.82E	Erven
915	MKATSHANE	103	0	32°11'41.3S	28°0'6.55E	Erven
916	TYEKANA	103	0	32°14'4.4S	28°3'39.36E	Erven
917	NOBANDA	103	0	32°13'15.44S	27°53'12.8E	Erven
918	SOBEKWA	103	0	32°9'24.24S	27°54'6.83E	Erven
919	MPETAS	103	0	32°14'25.05S	28°6'54.88E	Erven
920	NOFOTYO	103	0	32°12'15.44S	27°48'41.09E	Erven
921	SOBEKWA	104	0	32°9'22.9S	27°53'58.92E	Erven
922	MPETAS	104	0	32°14'15.78S	28°6'46.73E	Erven
923	NOFOTYO	104	0	32°12'18.09S	27°48'41.88E	Erven
924	NQAMAKWE	104	0	32°12'20.53S	27°56'51.57E	Erven
925	TYEKANA	104	0	32°13'59.36S	28°3'35.82E	Erven
926	NOBANDA	104	0	32°13'10.51S	27°53'14.37E	Erven
927	SOKAPASE	104	0	32°14'51.13S	28°0'35.75E	Erven

928	MKATSHANE	104	0	32°11'47.22S	28°0'10.15E	Erven
929	MPETAS	105	0	32°14'11.66S	28°6'39.3E	Erven
930	SOKAPASE	105	0	32°14'44S	28°0'34.02E	Erven
931	MKATSHANE	105	0	32°11'44.84S	28°0'17.18E	Erven
932	NOBANDA	105	0	32°13'4.25S	27°53'13.28E	Erven
933	NOFOTYO	105	0	32°12'17.06S	27°48'33.94E	Erven
934	SOBEKWA	105	0	32°9'23.93S	27°53'53.14E	Erven
935	NQAMAKWE	105	0	32°12'21.55S	27°56'51.31E	Erven
936	TYEKANA	105	0	32°13'59.51S	28°3'29.89E	Erven
937	SOBEKWA	106	0	32°9'31.85S	27°54'2.79E	Erven
938	MPETAS	106	0	32°14'7.51S	28°6'32.86E	Erven
939	MPAHLENI	106	0	32°13'18.24S	28°3'15.82E	Erven
940	NQAMAKWE	106	0	32°12'22.52S	27°56'51.08E	Erven
941	TYEKANA	106	0	32°13'59.26S	28°3'24.28E	Erven
942	SOKAPASE	106	0	32°14'41.23S	28°0'27.07E	Erven
943	NOFOTYO	106	0	32°12'6.25S	27°48'15.93E	Erven
944	MKATSHANE	106	0	32°11'38.17S	28°0'14.41E	Erven
945	NOBANDA	106	0	32°13'4.34S	27°53'8.63E	Erven
946	SOBEKWA	106	0	32°9'31.66S	27°54'4.59E	Erven
947	SOKAPASE	107	0	32°14'47.74S	28°0'25.94E	Erven
948	NOFOTYO	107	0	32°12'4.22S	27°48'21.81E	Erven
949	MKATSHANE	107	0	32°11'39.4S	28°0'24.35E	Erven
950	MPAHLENI	107	0	32°13'21.27S	28°3'25.51E	Erven
951	NOBANDA	107	0	32°13'0S	27°52'47.95E	Erven
952	TYEKANA	107	0	32°13'58.79S	28°3'18.39E	Erven
953	NQAMAKWE	107	0	32°12'23.47S	27°56'50.77E	Erven
954	MPETAS	107	0	32°14'4.66S	28°6'37.11E	Erven
955	SOBEKWA	107	0	32°9'33.93S	27°53'57.88E	Erven
956	SOBEKWA	107	0	32°9'34.96S	27°53'55.61E	Erven
957	MPETAS	108	0	32°14'3.06S	28°6'45E	Erven
958	NOFOTYO	108	0	32°12'2.12S	27°48'13.1E	Erven
959	MKATSHANE	108	0	32°11'35.98S	28°0'32.51E	Erven
960	SOKAPASE	108	0	32°14'51.2S	28°0'30.16E	Erven
961	NQAMAKWE	108	0	32°12'24.42S	27°56'50.36E	Erven
962	TYEKANA	108	0	32°13'56.36S	28°3'13.14E	Erven
963	NOBANDA	108	0	32°13'7.05S	27°52'46.91E	Erven
964	SOBEKWA	108	0	32°9'38.83S	27°53'51.24E	Erven
965	MPAHLENI	108	0	32°13'25.26S	28°3'37.12E	Erven
966	SOBEKWA	109	0	32°9'46.01S	27°53'47.82E	Erven
967	NOFOTYO	109	0	32°11'58.75S	27°48'8.04E	Erven
968	SOKAPASE	109	0	32°14'59.02S	28°0'29.29E	Erven
969	MPAHLENI	109	0	32°13'20.31S	28°3'34.45E	Erven
970	TYEKANA	109	0	32°14'4.24S	28°3'11.63E	Erven
971	NQAMAKWE	109	0	32°12'25.39S	27°56'49.96E	Erven
972	MKATSHANE	109	0	32°11'31.95S	28°0'44.7E	Erven
973	MPETAS	109	0	32°14'8.65S	28°6'54.27E	Erven
974	NOBANDA	109	0	32°13'16.54S	27°52'46.96E	Erven
975	MPETAS	110	0	32°14'37.15S	28°6'55.23E	Erven
976	MKATSHANE	110	0	32°11'40.16S	28°0'38.34E	Erven
977	NQAMAKWE	110	0	32°12'26.81S	27°56'49.19E	Erven
978	MPAHLENI	110	0	32°13'17.63S	28°3'28.58E	Erven
979	NOBANDA	110	0	32°13'12.38S	27°52'40.48E	Erven
980	SOBEKWA	110	0	32°9'47.19S	27°53'35.75E	Erven
981	SOKAPASE	110	0	32°14'56.97S	28°0'24.65E	Erven
982	TYEKANA	110	0	32°14'0.56S	28°3'6.26E	Erven
983	NOFOTYO	110	0	32°11'57.11S	27°48'12.82E	Erven
984	SOBEKWA	111	0	32°9'40.79S	27°53'40.85E	Erven
985	NOFOTYO	111	0	32°11'55.35S	27°48'3.99E	Erven
986	TYEKANA	111	0	32°13'54.59S	28°3'4.45E	Erven
987	NQAMAKWE	111	0	32°12'27.7S	27°56'48.73E	Erven

988	SOKAPASE	111	0	32°14'49.7S	28°0'16.69E	Erven
989	MPETAS	111	0	32°14'30.69S	28°6'49.95E	Erven
990	MKATSHANE	111	0	32°11'43.73S	28°0'40.87E	Erven
991	SOBEKWA	112	0	32°9'41.59S	27°53'35.93E	Erven
992	MPETAS	112	0	32°14'34.37S	28°6'43.93E	Erven
993	SOKAPASE	112	0	32°14'51.76S	28°0'9.84E	Erven
994	MKATSHANE	112	0	32°11'27.44S	28°0'37.09E	Erven
995	NQAMAKWE	112	0	32°12'28.59S	27°56'48.3E	Erven
996	TYEKANA	112	0	32°13'50.13S	28°3'9.01E	Erven
997	NOFOTYO	112	0	32°12'0.3S	27°48'2.08E	Erven
998	MPETAS	113	0	32°14'37.41S	28°6'39.23E	Erven
999	NOFOTYO	113	0	32°11'58.64S	27°47'57.76E	Erven
1000	NQAMAKWE	113	0	32°12'30.67S	27°56'49.07E	Erven
1001	SOBEKWA	113	0	32°9'39.03S	27°53'32.44E	Erven
1002	SOKAPASE	113	0	32°14'58.57S	27°59'58.7E	Erven
1003	MKATSHANE	113	0	32°11'55.21S	28°0'15.98E	Erven
1004	TYEKANA	113	0	32°13'44.22S	28°2'59.83E	Erven
1005	SOBEKWA	114	0	32°9'47.8S	27°53'26.78E	Erven
1006	NOFOTYO	114	0	32°11'57.2S	27°47'54.94E	Erven
1007	MKATSHANE	114	0	32°12'34.2S	27°59'41.28E	Erven
1008	NOBANDA	114	0	32°13'7.99S	27°52'18.56E	Erven
1009	TYEKANA	114	0	32°13'43.66S	28°3'7.34E	Erven
1010	NQAMAKWE	114	0	32°12'31.63S	27°56'49.09E	Erven
1011	MPETAS	114	0	32°14'43.2S	28°6'39.19E	Erven
1012	MPETAS	115	0	32°14'48.42S	28°6'35.91E	Erven
1013	SOBEKWA	115	0	32°9'52.11S	27°53'35.05E	Erven
1014	NQAMAKWE	115	0	32°12'32.62S	27°56'49.18E	Erven
1015	TYEKANA	115	0	32°13'45.94S	28°3'13.85E	Erven
1016	NOFOTYO	115	0	32°11'55.35S	27°47'52.79E	Erven
1017	MKATSHANE	115	0	32°11'50.77S	27°58'38.84E	Erven
1018	NOFOTYO	116	0	32°11'52.15S	27°48'2.44E	Erven
1019	NOBANDA	116	0	32°12'59.56S	27°52'17.97E	Erven
1020	MPETAS	116	0	32°15'2.25S	28°6'29.53E	Erven
1021	SOBEKWA	116	0	32°9'50.9S	27°53'42.73E	Erven
1022	NQAMAKWE	116	0	32°12'33.5S	27°56'48.45E	Erven
1023	TYEKANA	116	0	32°13'47.63S	28°3'21.32E	Erven
1024	MKATSHANE	116	0	32°11'45.28S	27°58'48.49E	Erven
1025	MPETAS	117	0	32°14'56.46S	28°6'25.95E	Erven
1026	SOBEKWA	117	0	32°9'53.36S	27°53'48.87E	Erven
1027	NOFOTYO	117	0	32°11'52.59S	27°47'53.65E	Erven
1028	MPAHLINI	117	0	32°13'20.89S	28°3'43.92E	Erven
1029	TYEKANA	117	0	32°13'52.68S	28°3'20.09E	Erven
1030	NQAMAKWE	117	0	32°12'33.77S	27°56'46.92E	Erven
1031	MKATSHANE	117	0	32°11'33.07S	27°58'53.53E	Erven
1032	NQAMAKWE	118	0	32°12'33.44S	27°56'45.58E	Erven
1033	SOBEKWA	118	0	32°10'2.49S	27°53'45.87E	Erven
1034	MBATSHA	118	0	32°12'45.49S	27°49'27.74E	Erven
1035	NOBANDA	118	0	32°12'56.25S	27°52'9.08E	Erven
1036	TYEKANA	118	0	32°13'51.31S	28°3'27.66E	Erven
1037	MPETAS	118	0	32°14'56.9S	28°6'14.99E	Erven
1038	SOKAPASE	118	0	32°14'52.45S	27°59'40.22E	Erven
1039	MPAHLINI	118	0	32°13'24.1S	28°3'47.5E	Erven
1040	NOFOTYO	118	0	32°11'48.73S	27°47'57.87E	Erven
1041	MKATSHANE	118	0	32°11'35.45S	27°58'45.72E	Erven
1042	MANQALAZA	118	0	32°11'46.24S	28°3'54.46E	Erven
1043	NQAMAKWE	119	0	32°12'33.06S	27°56'44.53E	Erven
1044	MPETAS	119	0	32°14'52.93S	28°6'13.8E	Erven
1045	NOFOTYO	119	0	32°11'47.22S	27°48'6.72E	Erven
1046	SOBEKWA	119	0	32°10'1.75S	27°53'37.79E	Erven
1047	NOBANDA	119	0	32°12'50.02S	27°52'12.18E	Erven

1048	TYEKANA	119	0	32°13'51.83S	28°3'31.73E	Erven
1049	MPAHLENI	119	0	32°12'33.37S	28°2'52.8E	Erven
1050	MKATSHANE	119	0	32°11'42.62S	27°58'36.59E	Erven
1051	SOBEKWA	120	0	32°10'2.63S	27°53'29.92E	Erven
1052	TYEKANA	120	0	32°13'51.39S	28°3'35.7E	Erven
1053	MPETAS	120	0	32°14'46.02S	28°6'30.03E	Erven
1054	NQAMAKWE	120	0	32°12'32.48S	27°56'43.62E	Erven
1055	NOFOTYO	120	0	32°11'42.1S	27°48'2.3E	Erven
1056	MPAHLENI	120	0	32°11'55.4S	28°2'18.87E	Erven
1057	MKATSHANE	120	0	32°11'41S	27°58'33.25E	Erven
1058	NQAMAKWE	121	0	32°12'31.92S	27°56'42.69E	Erven
1059	MPETAS	121	0	32°14'47.05S	28°6'22.85E	Erven
1060	NOFOTYO	121	0	32°11'39.01S	27°48'9.94E	Erven
1061	SOBEKWA	121	0	32°10'0.35S	27°53'25.1E	Erven
1062	TYEKANA	121	0	32°13'44.87S	28°3'35.03E	Erven
1063	MPAHLENI	121	0	32°11'53.14S	28°2'14.7E	Erven
1064	MKATSHANE	121	0	32°11'39.97S	27°58'27.39E	Erven
1065	NQAMAKWE	122	0	32°12'31.37S	27°56'41.74E	Erven
1066	MPETAS	122	0	32°14'41.39S	28°6'22E	Erven
1067	NOFOTYO	122	0	32°11'35.93S	27°48'7.03E	Erven
1068	SOBEKWA	122	0	32°10'5.13S	27°53'18.26E	Erven
1069	TYEKANA	122	0	32°13'38.91S	28°3'35.3E	Erven
1070	MPAHLENI	122	0	32°11'31.99S	28°2'14.07E	Erven
1071	MKATSHANE	122	0	32°11'34.71S	27°58'30.48E	Erven
1072	SOBEKWA	123	0	32°10'10.13S	27°53'21.31E	Erven
1073	MPETAS	123	0	32°14'37.68S	28°6'18.22E	Erven
1074	NQAMAKWE	123	0	32°12'30.81S	27°56'40.81E	Erven
1075	NOFOTYO	123	0	32°11'31.84S	27°48'10.96E	Erven
1076	TYEKANA	123	0	32°13'43.14S	28°3'30.07E	Erven
1077	MPAHLENI	123	0	32°11'45.42S	28°3'14.25E	Erven
1078	MKATSHANE	123	0	32°11'28.99S	27°58'27.36E	Erven
1079	NQAMAKWE	124	0	32°12'30.24S	27°56'39.87E	Erven
1080	MPETAS	124	0	32°14'33.67S	28°6'26.53E	Erven
1081	MPAHLENI	124	0	32°11'13.34S	28°2'18.85E	Erven
1082	TYEKANA	124	0	32°13'41.64S	28°3'26.25E	Erven
1083	SOBEKWA	124	0	32°10'8.75S	27°53'25.36E	Erven
1084	NOFOTYO	124	0	32°11'26.41S	27°48'15.76E	Erven
1085	MKATSHANE	124	0	32°11'26.54S	27°57'45.33E	Erven
1086	SOBEKWA	125	0	32°10'13.31S	27°53'27.73E	Erven
1087	MKATSHANE	125	0	32°11'37.95S	27°57'6.26E	Erven
1088	NQAMAKWE	125	0	32°12'28.16S	27°56'38.97E	Erven
1089	MPETAS	125	0	32°14'29.97S	28°6'31.59E	Erven
1090	TYEKANA	125	0	32°13'40.12S	28°3'23.1E	Erven
1091	NOFOTYO	125	0	32°12'1.22S	27°47'45.06E	Erven
1092	MPAHLENI	125	0	32°12'45.03S	28°1'27.01E	Erven
1093	NQAMAKWE	126	0	32°12'27.08S	27°56'39.47E	Erven
1094	MPETAS	126	0	32°14'27.18S	28°6'40.38E	Erven
1095	TYEKANA	126	0	32°13'36.56S	28°3'21.57E	Erven
1096	NOFOTYO	126	0	32°12'3.23S	27°47'49.77E	Erven
1097	SOBEKWA	126	0	32°10'8.81S	27°53'32.29E	Erven
1098	MKATSHANE	126	0	32°11'29.24S	27°56'43.96E	Erven
1099	MFENYANA	126	0	32°11'11.2S	28°3'23.67E	Erven
1100	MKATSHANE	127	0	32°11'9.12S	27°56'38.81E	Erven
1101	TYEKANA	127	0	32°13'37.15S	28°3'17.93E	Erven
1102	NOFOTYO	127	0	32°12'6.8S	27°47'42.93E	Erven
1103	SOBEKWA	127	0	32°10'7.5S	27°53'38.86E	Erven
1104	MPETAS	127	0	32°14'23.4S	28°6'44.61E	Erven
1105	NQAMAKWE	127	0	32°12'26.66S	27°56'37.97E	Erven
1106	NQAMAKWE	128	0	32°12'26.18S	27°56'36.81E	Erven
1107	MPETAS	128	0	32°14'18.97S	28°6'38.13E	Erven

1108	SOBEKWA	128	0	32°10'6.93S	27°53'48.11E	Erven
1109	MKATSHANE	128	0	32°10'52.26S	27°57'27.92E	Erven
1110	NOFOTYO	128	0	32°12'9.26S	27°47'42.59E	Erven
1111	TYEKANA	128	0	32°13'37.93S	28°3'10.18E	Erven
1112	MPETAS	129	0	32°14'22.87S	28°6'31.5E	Erven
1113	TYEKANA	129	0	32°13'29.9S	28°3'18.76E	Erven
1114	NOFOTYO	129	0	32°12'11.52S	27°47'44.59E	Erven
1115	NQAMAKWE	129	0	32°12'23.35S	27°56'38.99E	Erven
1116	SOBEKWA	129	0	32°10'12.41S	27°53'52.89E	Erven
1117	MKATSHANE	129	0	32°10'52.59S	27°57'42.15E	Erven
1118	SOBEKWA	130	0	32°10'11.4S	27°53'46.21E	Erven
1119	MKATSHANE	130	0	32°10'33.75S	27°59'11.1E	Erven
1120	MPAHLENI	130	0	32°11'28.1S	28°0'56.06E	Erven
1121	NQAMAKWE	130	0	32°12'23.79S	27°56'40.23E	Erven
1122	NOFOTYO	130	0	32°12'15.29S	27°47'43.07E	Erven
1123	MPETAS	130	0	32°14'16.45S	28°6'27.63E	Erven
1124	TYEKANA	130	0	32°13'33.99S	28°3'33.01E	Erven
1125	NQAMAKWE	131	0	32°12'24.24S	27°56'41.46E	Erven
1126	MPETAS	131	0	32°14'10.27S	28°6'22.98E	Erven
1127	TYEKANA	131	0	32°13'30.1S	28°3'38.04E	Erven
1128	MPAHLENI	131	0	32°11'27.96S	28°1'1.28E	Erven
1129	NOFOTYO	131	0	32°12'20.3S	27°47'47.72E	Erven
1130	MFENYANA	131	0	32°9'53.11S	28°2'29.04E	Erven
1131	MKATSHANE	131	0	32°10'59.12S	28°0'10.05E	Erven
1132	SOBEKWA	131	0	32°10'12.93S	27°53'38.22E	Erven
1133	NOFOTYO	132	0	32°12'14.53S	27°47'53.77E	Erven
1134	TYEKANA	132	0	32°13'28.14S	28°3'28.31E	Erven
1135	SOBEKWA	132	0	32°10'17.43S	27°53'30.94E	Erven
1136	MPAHLENI	132	0	32°11'24.54S	28°1'6.59E	Erven
1137	MFENYANA	132	0	32°9'46.02S	28°2'33.7E	Erven
1138	MKATSHANE	132	0	32°9'58.36S	27°57'9.51E	Erven
1139	MPETAS	132	0	32°13'55.78S	28°6'38.48E	Erven
1140	NQAMAKWE	132	0	32°12'24.69S	27°56'42.69E	Erven
1141	NQAMAKWE	133	0	32°12'25.15S	27°56'43.91E	Erven
1142	MPETAS	133	0	32°13'53.62S	28°6'50.41E	Erven
1143	TYEKANA	133	0	32°13'25.17S	28°3'21.84E	Erven
1144	MKATSHANE	133	0	32°9'59.67S	27°57'18.73E	Erven
1145	SOBEKWA	133	0	32°10'17.38S	27°53'38.33E	Erven
1146	MFENYANA	133	0	32°9'46.96S	28°2'48.13E	Erven
1147	MPAHLENI	133	0	32°11'18.32S	28°1'8.74E	Erven
1148	NOFOTYO	133	0	32°12'6.22S	27°47'54.7E	Erven
1149	NOBANDA	133	0	32°12'38.58S	27°52'10.48E	Erven
1150	NQAMAKWE	134	0	32°12'25.59S	27°56'45.14E	Erven
1151	NOFOTYO	134	0	32°12'9.27S	27°48'2.15E	Erven
1152	MKATSHANE	134	0	32°10'2.13S	27°57'27.78E	Erven
1153	TYEKANA	134	0	32°13'19.52S	28°3'12.6E	Erven
1154	NOBANDA	134	0	32°12'38.48S	27°52'3.51E	Erven
1155	SOBEKWA	134	0	32°10'16.35S	27°53'46.66E	Erven
1156	MFENYANA	134	0	32°9'50.2S	28°2'56.78E	Erven
1157	MPETAS	134	0	32°13'43.71S	28°6'42.16E	Erven
1158	MPAHLENI	134	0	32°11'21.36S	28°1'3.54E	Erven
1159	MAGAQANA	135	0	32°13'23.65S	28°3'11.36E	Erven
1160	SOBEKWA	135	0	32°10'19.57S	27°53'53.05E	Erven
1161	MPAHLENI	135	0	32°11'23.17S	28°0'58.64E	Erven
1162	NOBANDA	135	0	32°12'36.53S	27°52'46.53E	Erven
1163	NOFOTYO	135	0	32°12'16.95S	27°48'0.15E	Erven
1164	MKATSHANE	135	0	32°10'5.15S	27°57'34.94E	Erven
1165	MPETAS	135	0	32°13'35.76S	28°6'49.34E	Erven
1166	NQAMAKWE	135	0	32°12'25.94S	27°56'46.81E	Erven
1167	NQAMAKWE	136	0	32°12'26.84S	27°56'46.37E	Erven



1168	MPETAS	136	0	32°13'54.34S	28°7'4.92E	Erven
1169	NOFOTYO	136	0	32°12'23.61S	27°48'4.14E	Erven
1170	MKATSHANE	136	0	32°10'11.22S	27°57'26.68E	Erven
1171	MPAHLENI	136	0	32°11'17.25S	28°1'1.56E	Erven
1172	SOBEKWA	136	0	32°10'20S	27°53'46.46E	Erven
1173	MAGAQANA	136	0	32°13'31.12S	28°3'11.33E	Erven
1174	NOBANDA	136	0	32°12'29.97S	27°52'47.63E	Erven
1175	MPETAS	137	0	32°13'50.07S	28°7'9.92E	Erven
1176	MAGAQANA	137	0	32°13'29.5S	28°3'4.08E	Erven
1177	NOFOTYO	137	0	32°12'2.82S	27°48'6.33E	Erven
1178	SOBEKWA	137	0	32°10'25.36S	27°53'55.23E	Erven
1179	NOBANDA	137	0	32°12'22.33S	27°52'42.37E	Erven
1180	MPAHLENI	137	0	32°11'14.53S	28°1'9.25E	Erven
1181	MKATSHANE	137	0	32°10'9.41S	27°57'16.94E	Erven
1182	NQAMAKWE	137	0	32°12'27.72S	27°56'45.9E	Erven
1183	NQAMAKWE	138	0	32°12'26.93S	27°56'44.46E	Erven
1184	MPETAS	138	0	32°13'40.86S	28°7'8.42E	Erven
1185	MKATSHANE	138	0	32°10'10.62S	27°57'7.51E	Erven
1186	SOBEKWA	138	0	32°10'24S	27°53'47.32E	Erven
1187	TYEKANA	138	0	32°13'36.63S	28°2'59.51E	Erven
1188	MPAHLENI	138	0	32°11'10.44S	28°1'6.36E	Erven
1189	NOFOTYO	138	0	32°12'8.65S	27°48'8.96E	Erven
1190	NOBANDA	138	0	32°12'13.19S	27°52'35.41E	Erven
1191	NQAMAKWE	139	0	32°12'26.48S	27°56'43.23E	Erven
1192	MKATSHANE	139	0	32°10'4.1S	27°57'11.76E	Erven
1193	MPETAS	139	0	32°13'31.9S	28°7'9.35E	Erven
1194	NOFOTYO	139	0	32°12'15.69S	27°48'11.4E	Erven
1195	MPAHLENI	139	0	32°11'7.65S	28°1'11.64E	Erven
1196	NOBANDA	139	0	32°12'6.37S	27°52'28.58E	Erven
1197	SOBEKWA	139	0	32°10'23.36S	27°53'39.58E	Erven
1198	TYEKANA	139	0	32°13'27.5S	28°2'58.08E	Erven
1199	SOBEKWA	140	0	32°10'23.12S	27°53'32.54E	Erven
1200	TYEKANA	140	0	32°13'23.73S	28°2'54.66E	Erven
1201	NOBANDA	140	0	32°12'10.85S	27°52'26.58E	Erven
1202	MKATSHANE	140	0	32°10'5.99S	27°57'22.81E	Erven
1203	MPAHLENI	140	0	32°11'3.71S	28°1'13.77E	Erven
1204	NOFOTYO	140	0	32°12'21.51S	27°48'13.11E	Erven
1205	NQAMAKWE	140	0	32°12'26.04S	27°56'42.01E	Erven
1206	NQAMAKWE	141	0	32°12'25.59S	27°56'40.78E	Erven
1207	SOBEKWA	141	0	32°10'29.42S	27°53'31.37E	Erven
1208	MKATSHANE	141	0	32°10'37.63S	27°57'10.73E	Erven
1209	NOFOTYO	141	0	32°12'15.12S	27°48'16.48E	Erven
1210	MPAHLENI	141	0	32°11'6.14S	28°1'19.04E	Erven
1211	MFENYANA	141	0	32°9'57.29S	28°2'54.73E	Erven
1212	TYEKANA	141	0	32°13'28.65S	28°2'49.73E	Erven
1213	NOBANDA	141	0	32°12'17.88S	27°52'28.47E	Erven
1214	SOBEKWA	142	0	32°10'28.2S	27°53'25.63E	Erven
1215	NOFOTYO	142	0	32°12'10.36S	27°48'17.35E	Erven
1216	TYEKANA	142	0	32°13'24.16S	28°2'45.76E	Erven
1217	MPAHLENI	142	0	32°11'9.45S	28°1'23.25E	Erven
1218	NOBANDA	142	0	32°12'20.38S	27°52'21.42E	Erven
1219	MFENYANA	142	0	32°9'50.75S	28°2'45.61E	Erven
1220	MKATSHANE	142	0	32°10'41.55S	27°57'10.91E	Erven
1221	NQAMAKWE	142	0	32°12'25.13S	27°56'39.55E	Erven
1222	NQAMAKWE	143	0	32°12'24.68S	27°56'38.32E	Erven
1223	SOBEKWA	143	0	32°10'26.77S	27°53'20.28E	Erven
1224	MKATSHANE	143	0	32°10'41.79S	27°57'20.92E	Erven
1225	MFENYANA	143	0	32°9'51.59S	28°2'37.74E	Erven
1226	TYEKANA	143	0	32°13'15.12S	28°2'37.81E	Erven
1227	MPAHLENI	143	0	32°11'12.89S	28°1'20.59E	Erven

1228	NOFOTYO	143	0	32°12'14.13S	27°48'21.71E	Erven
1229	NOBANDA	143	0	32°12'26.73S	27°52'27.96E	Erven
1230	MPAHLENI	144	0	32°11'11.83S	28°1'13.47E	Erven
1231	MKATSHANE	144	0	32°10'46.81S	27°57'14.5E	Erven
1232	MPETAS	144	0	32°13'26.84S	28°7'3.89E	Erven
1233	TYEKANA	144	0	32°13'18.18S	28°2'33.54E	Erven
1234	SOBEKWA	144	0	32°10'30.88S	27°53'16.22E	Erven
1235	NOBANDA	144	0	32°12'27.81S	27°52'14.99E	Erven
1236	MFENYANA	144	0	32°9'59.14S	28°2'31.2E	Erven
1237	NOFOTYO	144	0	32°12'15.51S	27°48'26.32E	Erven
1238	NQAMAKWE	144	0	32°12'27.85S	27°56'41.63E	Erven
1239	NQAMAKWE	145	0	32°12'28.39S	27°56'42.93E	Erven
1240	MPETAS	145	0	32°13'36.08S	28°7'3.13E	Erven
1241	TYEKANA	145	0	32°13'23.42S	28°2'29.81E	Erven
1242	NOFOTYO	145	0	32°12'21.03S	27°48'23.55E	Erven
1243	SOBEKWA	145	0	32°10'34.5S	27°53'11.26E	Erven
1244	NOBANDA	145	0	32°12'26.74S	27°52'1.35E	Erven
1245	MFENYANA	145	0	32°10'7.26S	28°2'27.07E	Erven
1246	MPAHLENI	145	0	32°11'18.36S	28°1'21.48E	Erven
1247	MKATSHANE	145	0	32°11'53.97S	27°58'41.54E	Erven
1248	CEGCUANA	146	0	32°15'41.83S	28°3'37.17E	Erven
1249	NOFOTYO	146	0	32°12'23.64S	27°48'17.73E	Erven
1250	MPAHLENI	146	0	32°11'17.47S	28°1'14.29E	Erven
1251	MPETAS	146	0	32°13'35.1S	28°6'57.53E	Erven
1252	MFENYANA	146	0	32°10'4.8S	28°2'35.04E	Erven
1253	TYEKANA	146	0	32°13'23.38S	28°2'37.42E	Erven
1254	NQAMAKWE	146	0	32°12'28.91S	27°56'44.15E	Erven
1255	MKATSHANE	146	0	32°11'15.55S	27°58'3.88E	Erven
1256	SOBEKWA	146	0	32°10'33.79S	27°53'29.42E	Erven
1257	NOBANDA	146	0	32°12'29.83S	27°51'56.02E	Erven
1258	NQAMAKWE	147	0	32°12'29.43S	27°56'45.39E	Erven
1259	MPETAS	147	0	32°13'27.07S	28°7'0.29E	Erven
1260	TYEKANA	147	0	32°13'28.66S	28°2'33.7E	Erven
1261	MPAHLENI	147	0	32°11'19.52S	28°1'14.25E	Erven
1262	MKATSHANE	147	0	32°11'21.45S	27°57'59.5E	Erven
1263	SOBEKWA	147	0	32°10'30.9S	27°53'39.71E	Erven
1264	NOBANDA	147	0	32°11'31.16S	27°52'3.34E	Erven
1265	MFENYANA	147	0	32°10'7.54S	28°2'40.22E	Erven
1266	NOFOTYO	147	0	32°12'25.85S	27°48'21.25E	Erven
1267	MPAHLENI	148	0	32°11'24.93S	28°1'16.94E	Erven
1268	NOFOTYO	148	0	32°12'25.81S	27°48'24.72E	Erven
1269	MFENYANA	148	0	32°9'58.26S	28°2'39.79E	Erven
1270	NOBANDA	148	0	32°11'28.4S	27°52'10.86E	Erven
1271	TYEKANA	148	0	32°13'29.9S	28°2'37.5E	Erven
1272	MKATSHANE	148	0	32°11'20.88S	27°58'6.5E	Erven
1273	NQAMAKWE	148	0	32°12'29.84S	27°56'46.76E	Erven
1274	SOBEKWA	148	0	32°10'28.68S	27°53'49.38E	Erven
1275	MPETAS	148	0	32°13'27.14S	28°6'55.13E	Erven
1276	NQAMAKWE	149	0	32°12'30.9S	27°56'46.52E	Erven
1277	TYEKANA	149	0	32°13'31.18S	28°2'48.06E	Erven
1278	MPAHLENI	149	0	32°11'21.94S	28°1'20.1E	Erven
1279	MKATSHANE	149	0	32°11'25.71S	27°58'12.51E	Erven
1280	SOBEKWA	149	0	32°10'31.58S	27°53'59.24E	Erven
1281	NOBANDA	149	0	32°11'36.2S	27°52'16.62E	Erven
1282	MFENYANA	149	0	32°9'57.71S	28°2'47.87E	Erven
1283	NOFOTYO	149	0	32°12'22.74S	27°48'28.67E	Erven
1284	MPETAS	150	0	32°14'42.77S	28°7'51.44E	Erven
1285	MKATSHANE	150	0	32°11'31.14S	27°59'9.07E	Erven
1286	NOFOTYO	150	0	32°12'22.91S	27°48'36.11E	Erven
1287	SOBEKWA	150	0	32°10'35.6S	27°53'57.03E	Erven

1288	MFENYANA	150	0	32°10'4.95S	28°2'58.4E	Erven
1289	TYEKANA	150	0	32°13'34.27S	28°2'46.44E	Erven
1290	MPAHLENI	150	0	32°11'22.36S	28°1'29.24E	Erven
1291	NQAMAKWE	150	0	32°12'31.85S	27°56'46.29E	Erven
1292	NOBANDA	150	0	32°11'39.54S	27°52'8.17E	Erven
1293	MPAHLENI	151	0	32°11'16.13S	28°1'27.73E	Erven
1294	MKATSHANE	151	0	32°11'35.19S	27°59'12.1E	Erven
1295	MPETAS	151	0	32°15'7.69S	28°6'50.13E	Erven
1296	TYEKANA	151	0	32°13'41.69S	28°2'50E	Erven
1297	NQAMAKWE	151	0	32°12'30.79S	27°56'44.7E	Erven
1298	NOFOTYO	151	0	32°12'28.65S	27°48'36.11E	Erven
1299	SOBEKWA	151	0	32°10'38.44S	27°53'56.3E	Erven
1300	NOBANDA	151	0	32°11'41.63S	27°52'22.85E	Erven
1301	NQAMAKWE	152	0	32°12'30.16S	27°56'43.52E	Erven
1302	TYEKANA	152	0	32°13'38.3S	28°2'40.49E	Erven
1303	NOBANDA	152	0	32°11'49.3S	27°52'22.29E	Erven
1304	MPETAS	152	0	32°15'19.56S	28°6'26.38E	Erven
1305	MPAHLENI	152	0	32°11'12.65S	28°1'30.55E	Erven
1306	MKATSHANE	152	0	32°11'39.01S	27°59'16.86E	Erven
1307	SOBEKWA	152	0	32°10'33.94S	27°53'47.83E	Erven
1308	NQAMAKWE	153	0	32°12'29.51S	27°56'42.36E	Erven
1309	MPAHLENI	153	0	32°11'18.6S	28°1'31.9E	Erven
1310	MKATSHANE	153	0	32°11'34.21S	27°59'21.09E	Erven
1311	SOBEKWA	153	0	32°10'38.77S	27°53'41.57E	Erven
1312	NOFOTYO	153	0	32°10'54.87S	27°51'41.74E	Erven
1313	MPETAS	153	0	32°15'19.12S	28°6'21.97E	Erven
1314	TYEKANA	153	0	32°13'54.25S	28°2'37.8E	Erven
1315	NOBANDA	153	0	32°11'43.28S	27°53'2.46E	Erven
1316	MPAHLENI	154	0	32°11'21.06S	28°1'34.61E	Erven
1317	SOBEKWA	154	0	32°10'38.8S	27°53'30.96E	Erven
1318	TYEKANA	154	0	32°13'51.61S	28°2'32.28E	Erven
1319	NOBANDA	154	0	32°11'54.76S	27°52'37.99E	Erven
1320	NOFOTYO	154	0	32°10'55.68S	27°51'30.96E	Erven
1321	MPETAS	154	0	32°15'14.8S	28°6'23.71E	Erven
1322	MKATSHANE	154	0	32°11'28.97S	27°59'17.52E	Erven
1323	NQAMAKWE	154	0	32°12'28.84S	27°56'41.13E	Erven
1324	MKATSHANE	155	0	32°11'25.49S	27°59'21.39E	Erven
1325	TYEKANA	155	0	32°13'47.31S	28°2'35.77E	Erven
1326	SOBEKWA	155	0	32°10'38.35S	27°53'22.21E	Erven
1327	MPETAS	155	0	32°15'11.08S	28°6'28.7E	Erven
1328	NOBANDA	155	0	32°12'1.35S	27°52'15.72E	Erven
1329	NOFOTYO	155	0	32°11'3.16S	27°51'38.91E	Erven
1330	MPAHLENI	155	0	32°11'25.66S	28°1'36.63E	Erven
1331	NQAMAKWE	155	0	32°12'22.13S	27°56'34.42E	Erven
1332	NQAMAKWE	156	0	32°12'20.34S	27°56'33.83E	Erven
1333	MPAHLENI	156	0	32°11'29.63S	28°1'36.27E	Erven
1334	MKATSHANE	156	0	32°11'31.84S	27°59'28.74E	Erven
1335	NOFOTYO	156	0	32°11'6.65S	27°51'27.57E	Erven
1336	MPETAS	156	0	32°15'10.34S	28°6'23.73E	Erven
1337	TYEKANA	156	0	32°13'46.21S	28°2'30.11E	Erven
1338	SOBEKWA	156	0	32°10'45.83S	27°53'21.4E	Erven
1339	NOBANDA	156	0	32°12'41.37S	27°55'35.55E	Erven
1340	NQAMAKWE	157	0	32°12'20.77S	27°56'33.53E	Erven
1341	TYEKANA	157	0	32°13'45.38S	28°2'25.07E	Erven
1342	SOBEKWA	157	0	32°10'56.95S	27°53'21.29E	Erven
1343	NOBANDA	157	0	32°12'35.34S	27°55'53.32E	Erven
1344	MPETAS	157	0	32°15'12.35S	28°6'18.27E	Erven
1345	MPAHLENI	157	0	32°11'32.47S	28°1'35.06E	Erven
1346	NOFOTYO	157	0	32°11'9.41S	27°51'23.42E	Erven
1347	MKATSHANE	157	0	32°11'36.6S	27°59'29.33E	Erven

1348	NQAMAKWE	158	0	32°12'21.19S	27°56'33.25E	Erven
1349	TYEKANA	158	0	32°13'49.41S	28°2'20.92E	Erven
1350	NOFOTYO	158	0	32°11'17.62S	27°51'24.4E	Erven
1351	MPAHLENI	158	0	32°11'35.53S	28°1'33.26E	Erven
1352	MPETAS	158	0	32°15'8.89S	28°6'13.34E	Erven
1353	NOBANDA	158	0	32°13'12.46S	27°54'2.85E	Erven
1354	SOBEKWA	158	0	32°10'50.86S	27°53'23.44E	Erven
1355	MKATSHANE	158	0	32°11'34.6S	27°59'37.7E	Erven
1356	MKATSHANE	159	0	32°11'29.46S	27°59'36.1E	Erven
1357	NOFOTYO	159	0	32°11'30.75S	27°49'20.03E	Erven
1358	MPAHLENI	159	0	32°11'39.36S	28°1'33.07E	Erven
1359	MPETAS	159	0	32°15'15.6S	28°6'14.76E	Erven
1360	SOBEKWA	159	0	32°10'47.6S	27°53'29.04E	Erven
1361	NQAMAKWE	159	0	32°12'21.6S	27°56'32.97E	Erven
1362	TYEKANA	159	0	32°13'44.44S	28°2'20.59E	Erven
1363	NOFOTYO	159	0	32°11'26.36S	27°49'42.07E	Erven
1364	NOBANDA	159	0	32°13'39.74S	27°54'42.13E	Erven
1365	MFENYANA	159	0	32°10'7.26S	28°2'52.79E	Erven
1366	NQAMAKWE	160	0	32°12'22.76S	27°56'33.55E	Erven
1367	TYEKANA	160	0	32°13'37.79S	28°2'22.38E	Erven
1368	NOBANDA	160	0	32°13'19.69S	27°53'20.11E	Erven
1369	SOBEKWA	160	0	32°10'43.69S	27°53'32.86E	Erven
1370	MPETAS	160	0	32°15'12.29S	28°6'8.99E	Erven
1371	MKATSHANE	160	0	32°11'26.03S	27°59'32.03E	Erven
1372	MPAHLENI	160	0	32°11'6.5S	28°2'8.33E	Erven
1373	NQAMAKWE	161	0	32°12'23.07S	27°56'34.21E	Erven
1374	MPAHLENI	161	0	32°11'4.33S	28°2'1.8E	Erven
1375	MKATSHANE	161	0	32°11'21.44S	27°59'29.95E	Erven
1376	TYEKANA	161	0	32°13'44.47S	28°2'15.91E	Erven
1377	NOFOTYO	161	0	32°11'20.05S	27°49'3.89E	Erven
1378	MPETAS	161	0	32°15'9.76S	28°6'2.75E	Erven
1379	SOBEKWA	161	0	32°10'50.54S	27°53'40.83E	Erven
1380	NOBANDA	161	0	32°13'21.52S	27°53'20.48E	Erven
1381	MKATSHANE	162	0	32°11'19.24S	27°59'24.98E	Erven
1382	TYEKANA	162	0	32°13'42.44S	28°2'14.04E	Erven
1383	MPETAS	162	0	32°15'6.66S	28°6'7.13E	Erven
1384	NOBANDA	162	0	32°13'0S	27°53'2.98E	Erven
1385	MBATSHA	162	0	32°11'25.35S	27°48'24.87E	Erven
1386	SOBEKWA	162	0	32°10'47.19S	27°53'46.32E	Erven
1387	MPAHLENI	162	0	32°11'0.33S	28°1'54.81E	Erven
1388	NQAMAKWE	162	0	32°12'22.94S	27°56'35.67E	Erven
1389	NQAMAKWE	163	0	32°12'22.52S	27°56'35.96E	Erven
1390	MPAHLENI	163	0	32°10'53.89S	28°1'52.75E	Erven
1391	SOBEKWA	163	0	32°10'42.62S	27°53'48.5E	Erven
1392	MBATSHA	163	0	32°11'29.8S	27°48'21.03E	Erven
1393	NOBANDA	163	0	32°12'55.5S	27°52'55.3E	Erven
1394	MPETAS	163	0	32°15'3.27S	28°6'11.63E	Erven
1395	MKATSHANE	163	0	32°11'31.29S	27°59'42.71E	Erven
1396	TYEKANA	163	0	32°13'43.14S	28°2'7.8E	Erven
1397	NQAMAKWE	164	0	32°12'22.1S	27°56'36.24E	Erven
1398	MPAHLENI	164	0	32°10'47.93S	28°1'57.01E	Erven
1399	MKATSHANE	164	0	32°11'30.07S	27°59'46.91E	Erven
1400	MBATSHA	164	0	32°11'30.81S	27°48'20.18E	Erven
1401	MPETAS	164	0	32°15'1.19S	28°6'17.09E	Erven
1402	SOBEKWA	164	0	32°10'43.5S	27°53'54.02E	Erven
1403	TYEKANA	164	0	32°13'40.13S	28°2'11.42E	Erven
1404	SOBEKWA	165	0	32°10'43.96S	27°53'59.66E	Erven
1405	MKATSHANE	165	0	32°11'28.14S	27°59'51.51E	Erven
1406	TYEKANA	165	0	32°13'33.98S	28°2'17.36E	Erven
1407	MPETAS	165	0	32°15'6.69S	28°6'19.2E	Erven

1408	MPAHLENI	165	0	32°10'53.47S	28°1'56.59E	Erven
1409	MBATSHA	165	0	32°11'31.69S	27°48'19.25E	Erven
1410	NQAMAKWE	165	0	32°12'21.66S	27°56'36.52E	Erven
1411	NQAMAKWE	166	0	32°12'19.22S	27°56'46.58E	Erven
1412	MPAHLENI	166	0	32°10'59.25S	28°1'59.79E	Erven
1413	SOBEKWA	166	0	32°10'49.8S	27°54'0.75E	Erven
1414	MBATSHA	166	0	32°11'38.72S	27°48'19.72E	Erven
1415	TYEKANA	166	0	32°13'30.06S	28°2'13.78E	Erven
1416	MKATSHANE	166	0	32°11'26.92S	27°59'57.49E	Erven
1417	NGUZAS	166	0	32°15'3.46S	28°6'22.39E	Erven
1418	MKATSHANE	167	0	32°11'38.59S	27°59'56.4E	Erven
1419	MPETAS	167	0	32°14'36.39S	28°6'7.95E	Erven
1420	TYEKANA	167	0	32°13'34.51S	28°2'8.98E	Erven
1421	SOKAPASE	167	0	32°14'37.93S	27°58'40.68E	Erven
1422	MPAHLENI	167	0	32°11'2.79S	28°2'7.98E	Erven
1423	MBATSHA	167	0	32°11'52.56S	27°48'27.04E	Erven
1424	NQAMAKWE	167	0	32°12'16.66S	27°56'49.9E	Erven
1425	SOBEKWA	167	0	32°10'49.26S	27°53'54.21E	Erven
1426	SOBEKWA	168	0	32°10'54.5S	27°53'56.53E	Erven
1427	MPAHLENI	168	0	32°10'59.15S	28°2'8.16E	Erven
1428	MPETAS	168	0	32°14'31.3S	28°6'6.01E	Erven
1429	MKATSHANE	168	0	32°11'42.2S	27°59'51.38E	Erven
1430	TYEKANA	168	0	32°13'35.42S	28°2'3.11E	Erven
1431	NOFOTYO	168	0	32°11'52.11S	27°49'3.58E	Erven
1432	MKATSHANE	169	0	32°11'40.5S	27°59'43.45E	Erven
1433	MPAHLENI	169	0	32°10'56.45S	28°2'2.54E	Erven
1434	SOBEKWA	169	0	32°10'56.72S	27°53'58.76E	Erven
1435	MPETAS	169	0	32°14'27.15S	28°6'9.17E	Erven
1436	TYEKANA	169	0	32°13'40.32S	28°2'1.28E	Erven
1437	NOFOTYO	169	0	32°11'59.06S	27°50'30.07E	Erven
1438	SOBEKWA	170	0	32°10'53.97S	27°53'50.32E	Erven
1439	TYEKANA	170	0	32°13'25.15S	28°2'9.05E	Erven
1440	MPETAS	170	0	32°14'23.36S	28°6'13.25E	Erven
1441	MPAHLENI	170	0	32°10'51.91S	28°2'0.96E	Erven
1442	NOFOTYO	170	0	32°12'8.6S	27°50'8.98E	Erven
1443	MKATSHANE	170	0	32°11'45.67S	27°59'44.93E	Erven
1444	NQAMAKWE	171	0	32°12'38.73S	27°56'11.77E	Erven
1445	MKATSHANE	171	0	32°11'44.36S	27°59'34.31E	Erven
1446	MPAHLENI	171	0	32°10'47.01S	28°2'2.77E	Erven
1447	TYEKANA	171	0	32°13'21.36S	28°1'48.42E	Erven
1448	NOFOTYO	171	0	32°12'41.15S	27°49'23.64E	Erven
1449	SOBEKWA	171	0	32°10'59.8S	27°53'48.68E	Erven
1450	MPETAS	171	0	32°14'19.94S	28°6'15.66E	Erven
1451	NQAMAKWE	172	0	32°12'2.09S	27°56'28.22E	Erven
1452	MKATSHANE	172	0	32°11'40.9S	27°59'30.11E	Erven
1453	MPAHLENI	172	0	32°10'53.82S	28°2'6.96E	Erven
1454	NOFOTYO	172	0	32°10'51.23S	27°51'45E	Erven
1455	SOBEKWA	172	0	32°11'0.03S	27°53'39.28E	Erven
1456	TYEKANA	172	0	32°13'23.44S	28°1'54.25E	Erven
1457	MPETAS	172	0	32°14'16.18S	28°6'17.77E	Erven
1458	MFENYANA	172	0	32°10'16.96S	28°2'23.08E	Erven
1459	MPAHLENI	173	0	32°10'52.3S	28°2'11.53E	Erven
1460	TYEKANA	173	0	32°13'29.76S	28°1'47.86E	Erven
1461	MPETAS	173	0	32°14'20.23S	28°6'22.63E	Erven
1462	MKATSHANE	173	0	32°11'43.89S	27°59'24.97E	Erven
1463	SOBEKWA	173	0	32°10'52.89S	27°53'33.62E	Erven
1464	NQAMAKWE	173	0	32°12'4.95S	27°56'29.93E	Erven
1465	NQAMAKWE	174	0	32°11'51.85S	27°56'21.54E	Erven
1466	MKATSHANE	174	0	32°11'44.86S	27°59'18.35E	Erven
1467	TYEKANA	174	0	32°13'26.56S	28°2'0.86E	Erven



1468	MPAHLENI	174	0	32°10'55.53S	28°2'13.48E	Erven
1469	SOKAPASE	174	0	32°12'43.85S	28°0'39.02E	Erven
1470	MPETAS	174	0	32°14'25.34S	28°6'23.25E	Erven
1471	SOBEKWA	174	0	32°10'59.99S	27°53'33.21E	Erven
1472	MFENYANA	174	0	32°10'15.4S	28°2'34.86E	Erven
1473	SOKAPASE	175	0	32°14'6.17S	28°0'8.27E	Erven
1474	TYEKANA	175	0	32°13'29.9S	28°2'0.85E	Erven
1475	MPAHLENI	175	0	32°10'59.44S	28°2'15.83E	Erven
1476	MPETAS	175	0	32°14'26.35S	28°6'15.93E	Erven
1477	SOBEKWA	175	0	32°11'0.1S	27°53'25.42E	Erven
1478	MKATSHANE	175	0	32°11'45.73S	27°59'13.11E	Erven
1479	NQAMAKWE	175	0	32°12'0.04S	27°56'18.05E	Erven
1480	MFENYANA	175	0	32°10'15.7S	28°2'43.85E	Erven
1481	TYEKANA	176	0	32°13'36.65S	28°1'55.34E	Erven
1482	MPAHLENI	176	0	32°10'56.61S	28°2'20.05E	Erven
1483	MKATSHANE	176	0	32°10'43.76S	28°0'10.99E	Erven
1484	NQAMAKWE	176	0	32°11'58.95S	27°56'18.29E	Erven
1485	MPETAS	176	0	32°14'33.54S	28°6'12.51E	Erven
1486	MFENYANA	176	0	32°10'22.27S	28°2'44.62E	Erven
1487	SOKAPASE	177	0	32°14'4.66S	27°59'45.37E	Erven
1488	NQAMAKWE	177	0	32°11'57.97S	27°56'18.33E	Erven
1489	MPETAS	177	0	32°14'31.35S	28°6'17.75E	Erven
1490	TYEKANA	177	0	32°13'40.6S	28°1'53.44E	Erven
1491	MPAHLENI	177	0	32°10'52.12S	28°2'17.18E	Erven
1492	MKATSHANE	177	0	32°10'43.62S	28°0'28.96E	Erven
1493	MFENYANA	177	0	32°10'23.32S	28°2'51.5E	Erven
1494	TYEKANA	178	0	32°13'43.65S	28°1'52.53E	Erven
1495	MPAHLENI	178	0	32°10'48.59S	28°2'12.12E	Erven
1496	MPETAS	178	0	32°14'26.44S	28°7'11.49E	Erven
1497	MKATSHANE	178	0	32°10'45.86S	28°0'19.63E	Erven
1498	SOKAPASE	178	0	32°12'35.01S	28°0'5.87E	Erven
1499	MFENYANA	178	0	32°10'21.88S	28°2'56.06E	Erven
1500	SOKAPASE	179	0	32°14'4.86S	27°59'55.05E	Erven
1501	TYEKANA	179	0	32°13'46.84S	28°1'52.93E	Erven
1502	MPETAS	179	0	32°13'20.66S	28°6'55.39E	Erven
1503	MPAHLENI	179	0	32°10'47.23S	28°2'8.33E	Erven
1504	MKATSHANE	179	0	32°10'48.63S	28°0'27.2E	Erven
1505	MFENYANA	179	0	32°10'27.15S	28°3'2.88E	Erven
1506	MPAHLENI	180	0	32°10'42.85S	28°2'5.72E	Erven
1507	MKATSHANE	180	0	32°10'54.41S	28°0'20.82E	Erven
1508	TYEKANA	180	0	32°13'52.65S	28°1'46.1E	Erven
1509	SOKAPASE	180	0	32°12'55.25S	27°59'52.55E	Erven
1510	MFENYANA	180	0	32°10'28.78S	28°3'11.39E	Erven
1511	SOKAPASE	181	0	32°12'40.49S	28°0'27.31E	Erven
1512	MPAHLENI	181	0	32°10'37.12S	28°2'4.98E	Erven
1513	TYEKANA	181	0	32°13'51.77S	28°1'52.73E	Erven
1514	MKATSHANE	181	0	32°10'54.28S	28°0'28.1E	Erven
1515	MFENYANA	181	0	32°10'28.02S	28°3'20.08E	Erven
1516	SOKAPASE	182	0	32°12'37.38S	28°0'16.47E	Erven
1517	MPAHLENI	182	0	32°10'32.5S	28°2'8.29E	Erven
1518	MKATSHANE	182	0	32°11'2.06S	28°0'29.22E	Erven
1519	TYEKANA	182	0	32°13'56.61S	28°1'52.54E	Erven
1520	MFENYANA	182	0	32°10'33.14S	28°3'18.94E	Erven
1521	MPAHLENI	183	0	32°10'26.4S	28°2'9.15E	Erven
1522	TYEKANA	183	0	32°13'52.59S	28°2'1.45E	Erven
1523	MKATSHANE	183	0	32°11'2.19S	28°0'22.54E	Erven
1524	NQAMAKWE	183	0	32°12'15.23S	27°56'11.2E	Erven
1525	MFENYANA	183	0	32°10'36.97S	28°3'28.6E	Erven
1526	TYEKANA	184	0	32°13'57.89S	28°2'3.39E	Erven
1527	MPAHLENI	184	0	32°10'25.38S	28°2'15.07E	Erven

1528	MKATSHANE	184	0	32°11'10.55S	28°0'23.85E	Erven
1529	NQAMAKWE	184	0	32°12'15.96S	27°56'11.02E	Erven
1530	MFENYANA	184	0	32°10'31.41S	28°3'29.85E	Erven
1531	MPAHLENI	185	0	32°10'27.43S	28°2'22.46E	Erven
1532	TYEKANA	185	0	32°14'1.2S	28°1'52.98E	Erven
1533	SOKAPASE	185	0	32°14'55.25S	27°59'50.12E	Erven
1534	MKATSHANE	185	0	32°11'10.07S	28°0'30.43E	Erven
1535	NQAMAKWE	185	0	32°12'16.72S	27°56'10.77E	Erven
1536	MKATSHANE	186	0	32°11'18.39S	28°0'31.97E	Erven
1537	NQAMAKWE	186	0	32°12'17.39S	27°56'10.56E	Erven
1538	TYEKANA	186	0	32°14'4.94S	28°1'56.1E	Erven
1539	MPAHLENI	186	0	32°10'30.96S	28°2'26.67E	Erven
1540	NOFOTYO	186	0	32°11'34.8S	27°49'4.56E	Erven
1541	SOKAPASE	186	0	32°14'59.52S	28°0'54.33E	Erven
1542	SOKAPASE	187	0	32°14'0.51S	28°0'2.94E	Erven
1543	MPAHLENI	187	0	32°10'30.51S	28°2'18.42E	Erven
1544	TYEKANA	187	0	32°14'7.1S	28°2'0.47E	Erven
1545	MKATSHANE	187	0	32°11'18.9S	28°0'25.71E	Erven
1546	NQAMAKWE	187	0	32°12'18.9S	27°56'9.83E	Erven
1547	NOFOTYO	187	0	32°11'27.83S	27°49'35.6E	Erven
1548	MKATSHANE	188	0	32°10'28.78S	27°59'21.68E	Erven
1549	SOKAPASE	188	0	32°14'3.1S	28°0'45.41E	Erven
1550	TYEKANA	188	0	32°14'0.88S	28°2'7.9E	Erven
1551	MPAHLENI	188	0	32°10'33.36S	28°2'17.27E	Erven
1552	NOFOTYO	188	0	32°11'0.83S	27°51'6.96E	Erven
1553	MKATSHANE	189	0	32°10'28.2S	27°59'31.15E	Erven
1554	TYEKANA	189	0	32°14'5.85S	28°2'13.24E	Erven
1555	SOKAPASE	189	0	32°13'55.06S	28°0'52.8E	Erven
1556	MPAHLENI	189	0	32°10'33.64S	28°2'28.58E	Erven
1557	MFENYANA	189	0	32°10'32.65S	28°3'42.15E	Erven
1558	SOKAPASE	190	0	32°13'6.39S	27°59'29.1E	Erven
1559	TYEKANA	190	0	32°14'9.55S	28°2'4.71E	Erven
1560	MPAHLENI	190	0	32°10'36.22S	28°2'30.6E	Erven
1561	MKATSHANE	190	0	32°10'28.87S	27°59'39.94E	Erven
1562	DUDUMASHE	190	0	32°7'54.11S	27°55'54.48E	Erven
1563	MFENYANA	190	0	32°10'36.73S	28°3'40.6E	Erven
1564	MPAHLENI	191	0	32°10'37.26S	28°2'20.43E	Erven
1565	MKATSHANE	191	0	32°10'31.7S	27°59'46.32E	Erven
1566	TYEKANA	191	0	32°14'13.07S	28°2'7.97E	Erven
1567	MFENYANA	191	0	32°10'40.53S	28°3'40.02E	Erven
1568	MPAHLENI	192	0	32°10'34.98S	28°2'13.2E	Erven
1569	MKATSHANE	192	0	32°10'40.6S	27°59'51.07E	Erven
1570	TYEKANA	192	0	32°14'16.55S	28°2'12.3E	Erven
1571	MFENYANA	192	0	32°10'48.01S	28°3'40.53E	Erven
1572	TYEKANA	193	0	32°14'18.68S	28°2'19.29E	Erven
1573	MKATSHANE	193	0	32°10'46.46S	27°59'50.52E	Erven
1574	MPAHLENI	193	0	32°10'40.86S	28°2'28.27E	Erven
1575	MFENYANA	193	0	32°10'53.62S	28°3'38.51E	Erven
1576	MPAHLENI	194	0	32°10'37.61S	28°2'33.91E	Erven
1577	TYEKANA	194	0	32°14'25.09S	28°2'14.73E	Erven
1578	MKATSHANE	194	0	32°10'41.27S	27°59'45.9E	Erven
1579	MFENYANA	194	0	32°10'50.24S	28°3'28.4E	Erven
1580	MPAHLENI	195	0	32°10'43.94S	28°2'33.06E	Erven
1581	TYEKANA	195	0	32°14'26.18S	28°2'8.55E	Erven
1582	MKATSHANE	195	0	32°10'46.53S	27°59'41.14E	Erven
1583	MFENYANA	195	0	32°10'45.01S	28°3'32.87E	Erven
1584	MPAHLENI	196	0	32°10'39.57S	28°2'9.92E	Erven
1585	MKATSHANE	196	0	32°10'38.51S	27°59'41.67E	Erven
1586	TYEKANA	196	0	32°14'30.98S	28°2'0.98E	Erven
1587	MFENYANA	196	0	32°10'41.01S	28°3'25.1E	Erven

1588	TYEKANA	197	0	32°14'24.78S	28°1'56.15E	Erven
1589	MPAHLINI	197	0	32°10'44.25S	28°2'11.65E	Erven
1590	MKATSHANE	197	0	32°10'39.8S	27°59'37.42E	Erven
1591	MFENYANA	197	0	32°10'39.69S	28°3'17.82E	Erven
1592	MPAHLINI	198	0	32°10'50.05S	28°2'20.03E	Erven
1593	MKATSHANE	198	0	32°10'33.27S	27°59'33.54E	Erven
1594	TYEKANA	198	0	32°14'19.91S	28°2'2.04E	Erven
1595	MFENYANA	198	0	32°10'36.15S	28°3'11.51E	Erven
1596	MKATSHANE	199	0	32°10'35.3S	27°59'28.15E	Erven
1597	TYEKANA	199	0	32°14'15.27S	28°1'56.87E	Erven
1598	MPAHLINI	199	0	32°10'56.34S	28°2'25.6E	Erven
1599	MPAHLINI	200	0	32°11'0.47S	28°2'23.31E	Erven
1600	TYEKANA	200	0	32°14'17.83S	28°1'53.42E	Erven
1601	SOBEKWA	200	0	32°9'2.63S	27°53'59.3E	Erven
1602	MKATSHANE	200	0	32°11'1.58S	27°56'53.39E	Erven
1603	MPETAS	200	0	32°15'38.78S	28°6'39.37E	Erven
1604	MFENYANA	200	0	32°10'51.57S	28°3'13.98E	Erven
1605	MPAHLINI	201	0	32°11'2.74S	28°2'17.2E	Erven
1606	SOBEKWA	201	0	32°9'2.61S	27°54'17.91E	Erven
1607	MPETAS	201	0	32°15'17.95S	28°6'48.98E	Erven
1608	MKATSHANE	201	0	32°11'25.78S	27°58'50.95E	Erven
1609	MFENYANA	201	0	32°10'59.08S	28°3'9.1E	Erven
1610	SOBEKWA	202	0	32°9'7.09S	27°54'9.63E	Erven
1611	MPAHLINI	202	0	32°11'5.18S	28°2'19.54E	Erven
1612	TYEKANA	202	0	32°14'4.08S	28°4'20.36E	Erven
1613	MKATSHANE	202	0	32°10'5.88S	27°57'17.34E	Erven
1614	MFENYANA	202	0	32°10'53.01S	28°3'3.46E	Erven
1615	MPAHLINI	203	0	32°11'2.09S	28°2'30.13E	Erven
1616	TYEKANA	203	0	32°14'0.29S	28°4'55.37E	Erven
1617	SOBEKWA	203	0	32°9'8.48S	27°54'1.5E	Erven
1618	MKATSHANE	203	0	32°10'35S	27°59'39.77E	Erven
1619	MFENYANA	203	0	32°10'49.21S	28°3'8.89E	Erven
1620	MPAHLINI	204	0	32°10'58.69S	28°2'32.5E	Erven
1621	TYEKANA	204	0	32°14'10.01S	28°3'20.29E	Erven
1622	SOBEKWA	204	0	32°9'7.46S	27°53'53.91E	Erven
1623	MKATSHANE	204	0	32°11'6.38S	28°0'24.64E	Erven
1624	MFENYANA	204	0	32°10'41.57S	28°3'7.02E	Erven
1625	MPAHLINI	205	0	32°10'53.15S	28°2'27.64E	Erven
1626	SOBEKWA	205	0	32°9'14.25S	27°53'43.44E	Erven
1627	TYEKANA	205	0	32°13'45.44S	28°2'43.13E	Erven
1628	MKATSHANE	205	0	32°11'31.07S	27°59'28.45E	Erven
1629	MFENYANA	205	0	32°10'35.94S	28°2'59.48E	Erven
1630	MPAHLINI	206	0	32°10'45.13S	28°2'18.77E	Erven
1631	SOBEKWA	206	0	32°9'4.52S	27°53'43.92E	Erven
1632	TYEKANA	206	0	32°13'20.99S	28°2'22.56E	Erven
1633	MKATSHANE	206	0	32°11'43.06S	27°59'44.01E	Erven
1634	MFENYANA	206	0	32°10'38.94S	28°2'52.78E	Erven
1635	SOBEKWA	207	0	32°9'8.01S	27°53'36.26E	Erven
1636	MPAHLINI	207	0	32°10'48.47S	28°2'26.87E	Erven
1637	MKATSHANE	207	0	32°11'20.63S	27°58'4.04E	Erven
1638	TYEKANA	207	0	32°14'15.52S	28°2'53.48E	Erven
1639	MFENYANA	207	0	32°10'32.96S	28°2'45.11E	Erven
1640	MPAHLINI	208	0	32°10'54.72S	28°2'34.35E	Erven
1641	MKATSHANE	208	0	32°11'13.02S	27°58'54.25E	Erven
1642	TYEKANA	208	0	32°14'32.37S	28°4'48.2E	Erven
1643	MFENYANA	208	0	32°10'31.7S	28°2'55.12E	Erven
1644	MPAHLINI	209	0	32°11'0.83S	28°2'38.12E	Erven
1645	SOBEKWA	209	0	32°9'12.34S	27°53'32.61E	Erven
1646	TYEKANA	209	0	32°13'35.53S	28°4'45.44E	Erven
1647	TYEKANA	209	0	32°14'24.53S	28°3'13.44E	Erven

1648	TYEKANA	209	0	32°14'30.47S	28°3'19.92E	Erven
1649	MFENYANA	209	0	32°10'28.75S	28°2'46.28E	Erven
1650	SOBEKWA	210	0	32°9'17.03S	27°53'37.44E	Erven
1651	MPAHLENI	210	0	32°11'5.41S	28°2'33.27E	Erven
1652	MFENYANA	210	0	32°10'28.98S	28°2'35.26E	Erven
1653	TYEKANA	210	0	32°14'12.02S	28°3'16.89E	Erven
1654	MPAHLENI	211	0	32°11'6.25S	28°2'24.87E	Erven
1655	SOBEKWA	211	0	32°9'19.34S	27°53'33.57E	Erven
1656	MFENYANA	211	0	32°10'23.82S	28°2'32.73E	Erven
1657	SOBEKWA	212	0	32°9'22.49S	27°53'28.91E	Erven
1658	MPAHLENI	212	0	32°11'11.76S	28°2'21.52E	Erven
1659	MFENYANA	212	0	32°10'23.36S	28°2'23.42E	Erven
1660	SOBEKWA	213	0	32°9'23.08S	27°53'24.79E	Erven
1661	MPAHLENI	213	0	32°11'12.55S	28°2'15.59E	Erven
1662	SOKAPASE	213	0	32°15'7.73S	28°0'45.29E	Erven
1663	MPAHLENI	214	0	32°11'18.24S	28°2'18.3E	Erven
1664	SOBEKWA	214	0	32°9'37.61S	27°53'25.93E	Erven
1665	MPAHLENI	215	0	32°11'16.1S	28°2'24.55E	Erven
1666	SOBEKWA	215	0	32°9'34.61S	27°53'22.78E	Erven
1667	MPAHLENI	216	0	32°11'9.92S	28°2'26.33E	Erven
1668	SOBEKWA	216	0	32°9'30.56S	27°53'19.27E	Erven
1669	MPAHLENI	217	0	32°11'8.44S	28°2'33.32E	Erven
1670	SOBEKWA	217	0	32°9'29.11S	27°53'7.91E	Erven
1671	SOBEKWA	218	0	32°9'25.33S	27°53'13.95E	Erven
1672	MPAHLENI	218	0	32°11'4.59S	28°2'41E	Erven
1673	MPAHLENI	219	0	32°10'57.02S	28°2'41.12E	Erven
1674	MFENYANA	219	0	32°13'15.04S	28°6'17.43E	Erven
1675	SOBEKWA	219	0	32°9'23.42S	27°53'19.71E	Erven
1676	MPAHLENI	220	0	32°10'50.73S	28°2'34.01E	Erven
1677	SOBEKWA	220	0	32°9'12.04S	27°53'25.15E	Erven
1678	SOBEKWA	221	0	32°9'10.92S	27°53'18.85E	Erven
1679	MPAHLENI	221	0	32°10'55.1S	28°2'43.28E	Erven
1680	SOBEKWA	222	0	32°9'18.97S	27°53'12.14E	Erven
1681	MPAHLENI	222	0	32°11'3.41S	28°2'44.85E	Erven
1682	MPAHLENI	223	0	32°11'10.14S	28°2'40.66E	Erven
1683	MPAHLENI	224	0	32°11'11.97S	28°2'32.37E	Erven
1684	MPAHLENI	225	0	32°11'16.99S	28°2'29.82E	Erven
1685	MPAHLENI	226	0	32°11'20.49S	28°2'25.42E	Erven
1686	MPAHLENI	227	0	32°11'23.5S	28°2'18.63E	Erven
1687	MPAHLENI	228	0	32°11'20.74S	28°2'13.42E	Erven
1688	MPAHLENI	229	0	32°11'16.88S	28°2'9.31E	Erven
1689	MPAHLENI	230	0	32°11'23.47S	28°2'10.94E	Erven
1690	MPAHLENI	231	0	32°11'28.2S	28°2'15.48E	Erven
1691	MPAHLENI	232	0	32°11'25.99S	28°2'21.15E	Erven
1692	MPAHLENI	233	0	32°11'23.6S	28°2'29.12E	Erven
1693	MPAHLENI	234	0	32°11'20.45S	28°2'33.66E	Erven
1694	MPAHLENI	235	0	32°11'15.51S	28°2'36.03E	Erven
1695	MPAHLENI	236	0	32°11'12.83S	28°2'43.02E	Erven
1696	MPAHLENI	237	0	32°11'3.84S	28°2'47.07E	Erven
1697	MPAHLENI	238	0	32°11'13.94S	28°2'46.92E	Erven
1698	MPAHLENI	239	0	32°11'18.28S	28°2'44.06E	Erven
1699	MPAHLENI	240	0	32°11'19.41S	28°2'39.08E	Erven
1700	MPAHLENI	241	0	32°11'24.76S	28°2'36.12E	Erven
1701	MPAHLENI	242	0	32°11'27.83S	28°2'31.1E	Erven
1702	MPAHLENI	243	0	32°11'28.14S	28°2'23.69E	Erven
1703	MPAHLENI	244	0	32°11'33.46S	28°2'17.59E	Erven
1704	MPAHLENI	245	0	32°11'33.33S	28°2'21.36E	Erven
1705	NGUZAS	246	0	32°9'43.22S	28°3'0.16E	Erven
1706	MPAHLENI	246	0	32°11'37.43S	28°2'19.9E	Erven
1707	MPAHLENI	247	0	32°11'40.87S	28°2'20.69E	Erven

1708	MPAHLENI	248	0	32°11'38.83S	28°2'30.83E	Erven
1709	MPAHLENI	249	0	32°11'32.3S	28°2'30.39E	Erven
1710	MPAHLENI	250	0	32°11'32.15S	28°2'35.54E	Erven
1711	MPAHLENI	251	0	32°11'26.66S	28°2'39.65E	Erven
1712	MPAHLENI	252	0	32°11'22.14S	28°2'44.77E	Erven
1713	MPAHLENI	253	0	32°11'18.72S	28°2'49.97E	Erven
1714	MPAHLENI	254	0	32°11'25.27S	28°2'49.25E	Erven
1715	MPAHLENI	255	0	32°11'29.45S	28°2'49.78E	Erven
1716	MPAHLENI	256	0	32°11'29.91S	28°2'41E	Erven
1717	MPAHLENI	257	0	32°11'35.5S	28°2'38.44E	Erven
1718	MPAHLENI	258	0	32°11'39.39S	28°2'35.68E	Erven
1719	MPAHLENI	259	0	32°11'48.89S	28°2'11.66E	Erven
1720	MPAHLENI	260	0	32°11'50.9S	28°2'12.27E	Erven
1721	MPAHLENI	261	0	32°11'45.79S	28°2'15.16E	Erven
1722	MPAHLENI	263	0	32°12'45.83S	28°2'35.69E	Erven
1723	MPAHLENI	263	0	32°12'29.58S	28°2'25.17E	Erven
1724	MPAHLENI	263	0	32°11'51.63S	28°1'43.11E	Erven
1725	MPAHLENI	264	0	32°10'57.11S	28°1'58.89E	Erven
1726	MPAHLENI	265	0	32°11'14.84S	28°1'16.38E	Erven
1727	MPAHLENI	266	0	32°11'10.67S	28°2'30.38E	Erven
1728	MAXEGWANAS	270	0	32°9'51.82S	27°58'24.03E	Erven
1729	SOBEKWA	278	0	32°9'57.49S	27°52'48.77E	Erven
1730	SOBEKWA	279	0	32°10'4.51S	27°52'55.98E	Erven
1731	MAVUSO	279	0	32°13'19.02S	27°56'13.08E	Erven
1732	SOBEKWA	280	0	32°10'8.19S	27°52'50.63E	Erven
1733	MAVUSO	280	0	32°13'22.51S	27°56'8.02E	Erven
1734	SOBEKWA	281	0	32°9'58.56S	27°52'35.88E	Erven
1735	MAVUSO	281	0	32°13'42.26S	27°55'35.5E	Erven
1736	SOBEKWA	282	0	32°9'54.62S	27°52'29.54E	Erven
1737	MAVUSO	282	0	32°13'43.49S	27°55'29.39E	Erven
1738	SOBEKWA	283	0	32°9'57.53S	27°52'25.01E	Erven
1739	MAVUSO	283	0	32°13'47.92S	27°55'33.97E	Erven
1740	NOBANDA	285	0	32°11'13.19S	27°53'55.6E	Erven
1741	NOBANDA	286	0	32°12'50.16S	27°53'47.98E	Erven
1742	NOBANDA	287	0	32°12'52.15S	27°53'51.3E	Erven
1743	NOBANDA	288	0	32°12'45.93S	27°55'34.12E	Erven
1744	MAVUSO	292	0	32°13'46.5S	27°55'25.12E	Erven
1745	MAVUSO	293	0	32°13'50.51S	27°55'20.1E	Erven
1746	MAXEGWANAS	298	0	32°9'39.72S	28°2'37.43E	Erven
1747	NQAMAKWE	330	0	32°11'36.62S	27°56'32.38E	Erven
1748	NQAMAKWE	331	0	32°11'37.12S	27°56'33.81E	Erven
1749	NQAMAKWE	332	0	32°11'37.49S	27°56'34.18E	Erven
1750	NQAMAKWE	333	0	32°11'37.84S	27°56'34.53E	Erven
1751	SOBEKWA	334	0	32°9'55.98S	27°52'5.89E	Erven
1752	NQAMAKWE	334	0	32°11'38.18S	27°56'34.87E	Erven
1753	NQAMAKWE	335	0	32°11'38.52S	27°56'35.21E	Erven
1754	NQAMAKWE	336	0	32°11'38.88S	27°56'35.57E	Erven
1755	NQAMAKWE	337	0	32°11'39.22S	27°56'35.92E	Erven
1756	NQAMAKWE	338	0	32°11'39.57S	27°56'36.26E	Erven
1757	NQAMAKWE	339	0	32°11'39.91S	27°56'36.6E	Erven
1758	NQAMAKWE	340	0	32°11'40.25S	27°56'36.95E	Erven
1759	NQAMAKWE	341	0	32°11'40.61S	27°56'37.3E	Erven
1760	NQAMAKWE	342	0	32°11'40.96S	27°56'37.64E	Erven
1761	NQAMAKWE	343	0	32°11'41.3S	27°56'37.99E	Erven
1762	NQAMAKWE	344	0	32°11'41.64S	27°56'38.33E	Erven
1763	NQAMAKWE	345	0	32°11'42S	27°56'38.68E	Erven
1764	NQAMAKWE	346	0	32°11'42.34S	27°56'39.03E	Erven
1765	NQAMAKWE	347	0	32°11'42.69S	27°56'39.37E	Erven
1766	NQAMAKWE	348	0	32°11'43.03S	27°56'39.72E	Erven
1767	NQAMAKWE	349	0	32°11'43.37S	27°56'40.06E	Erven



1768	NQAMAKWE	350	0	32°11'43.72S	27°56'40.41E	Erven
1769	NQAMAKWE	351	0	32°11'44.07S	27°56'40.76E	Erven
1770	NQAMAKWE	352	0	32°11'44.51S	27°56'41.2E	Erven
1771	NQAMAKWE	353	0	32°11'44.86S	27°56'41.55E	Erven
1772	NQAMAKWE	354	0	32°11'45.2S	27°56'41.9E	Erven
1773	NQAMAKWE	355	0	32°11'45.56S	27°56'42.24E	Erven
1774	NQAMAKWE	356	0	32°11'45.9S	27°56'42.59E	Erven
1775	NQAMAKWE	357	0	32°11'46.24S	27°56'42.93E	Erven
1776	NQAMAKWE	358	0	32°11'46.65S	27°56'43.28E	Erven
1777	NQAMAKWE	359	0	32°11'46.87S	27°56'43.76E	Erven
1778	NQAMAKWE	360	0	32°11'46.85S	27°56'44.3E	Erven
1779	NQAMAKWE	361	0	32°11'46.86S	27°56'44.83E	Erven
1780	NQAMAKWE	362	0	32°11'46.89S	27°56'45.36E	Erven
1781	NQAMAKWE	363	0	32°11'46.9S	27°56'45.9E	Erven
1782	NQAMAKWE	364	0	32°11'46.92S	27°56'46.43E	Erven
1783	NQAMAKWE	365	0	32°11'46.93S	27°56'47E	Erven
1784	NQAMAKWE	366	0	32°11'46.96S	27°56'47.57E	Erven
1785	NQAMAKWE	367	0	32°11'47.05S	27°56'48.11E	Erven
1786	SOBEKWA	368	0	32°9'30.29S	27°53'44.85E	Erven
1787	SOBEKWA	368	0	32°9'29.92S	27°53'44.87E	Erven
1788	NQAMAKWE	369	0	32°11'48.18S	27°56'46.56E	Erven
1789	SOBEKWA	370	0	32°9'47.52S	27°53'59.94E	Erven
1790	NQAMAKWE	370	0	32°11'48.15S	27°56'46.04E	Erven
1791	SOBEKWA	371	0	32°10'2.17S	27°54'3.01E	Erven
1792	NQAMAKWE	371	0	32°11'48.14S	27°56'45.5E	Erven
1793	SOBEKWA	372	0	32°10'16.43S	27°54'24.75E	Erven
1794	NQAMAKWE	372	0	32°11'48.11S	27°56'44.97E	Erven
1795	SOBEKWA	373	0	32°10'55.6S	27°54'48.21E	Erven
1796	NQAMAKWE	373	0	32°11'48.1S	27°56'44.43E	Erven
1797	SOBEKWA	374	0	32°10'51.04S	27°55'51.57E	Erven
1798	NQAMAKWE	374	0	32°11'48.04S	27°56'43.85E	Erven
1799	NQAMAKWE	375	0	32°11'48.21S	27°56'43.34E	Erven
1800	SOBEKWA	376	0	32°10'34.87S	27°55'21.87E	Erven
1801	NQAMAKWE	376	0	32°11'48.59S	27°56'43.04E	Erven
1802	SOBEKWA	376	0	32°10'34.67S	27°55'21.84E	Erven
1803	NQAMAKWE	377	0	32°11'48.93S	27°56'42.7E	Erven
1804	NQAMAKWE	378	0	32°11'49.29S	27°56'42.36E	Erven
1805	NQAMAKWE	379	0	32°11'49.65S	27°56'41.84E	Erven
1806	NQAMAKWE	380	0	32°11'49.77S	27°56'40.9E	Erven
1807	NQAMAKWE	381	0	32°11'49.41S	27°56'40.17E	Erven
1808	NQAMAKWE	383	0	32°11'48.85S	27°56'39.34E	Erven
1809	NQAMAKWE	384	0	32°11'48.56S	27°56'38.92E	Erven
1810	NQAMAKWE	385	0	32°11'48.27S	27°56'38.5E	Erven
1811	NQAMAKWE	386	0	32°11'47.99S	27°56'38.09E	Erven
1812	NQAMAKWE	387	0	32°11'47.41S	27°56'37.5E	Erven
1813	NQAMAKWE	388	0	32°11'47.78S	27°56'37.14E	Erven
1814	NQAMAKWE	389	0	32°11'48.14S	27°56'36.81E	Erven
1815	NQAMAKWE	390	0	32°11'48.48S	27°56'36.46E	Erven
1816	NQAMAKWE	391	0	32°11'48.84S	27°56'36.13E	Erven
1817	NQAMAKWE	392	0	32°11'49.19S	27°56'35.8E	Erven
1818	NQAMAKWE	393	0	32°11'49.55S	27°56'35.46E	Erven
1819	NQAMAKWE	394	0	32°11'50.01S	27°56'35.03E	Erven
1820	NQAMAKWE	395	0	32°11'50.35S	27°56'34.69E	Erven
1821	NQAMAKWE	397	0	32°11'51.21S	27°56'33.88E	Erven
1822	NQAMAKWE	398	0	32°11'51.57S	27°56'33.55E	Erven
1823	NQAMAKWE	399	0	32°11'51.93S	27°56'33.21E	Erven
1824	NQAMAKWE	400	0	32°11'52.27S	27°56'32.87E	Erven
1825	NQAMAKWE	401	0	32°11'52.63S	27°56'32.54E	Erven
1826	NQAMAKWE	402	0	32°11'53.01S	27°56'32.18E	Erven
1827	NQAMAKWE	403	0	32°11'53.74S	27°56'31.49E	Erven

1828	NQAMAKWE	404	0	32°11'54.15S	27°56'31.1E	Erven
1829	NQAMAKWE	405	0	32°11'54.55S	27°56'30.72E	Erven
1830	NQAMAKWE	407	0	32°11'55.36S	27°56'29.95E	Erven
1831	NQAMAKWE	408	0	32°11'55.76S	27°56'29.56E	Erven
1832	NQAMAKWE	409	0	32°11'56.17S	27°56'29.19E	Erven
1833	NQAMAKWE	410	0	32°11'56.58S	27°56'28.82E	Erven
1834	NQAMAKWE	411	0	32°11'56.89S	27°56'29.46E	Erven
1835	NQAMAKWE	412	0	32°11'57.17S	27°56'29.87E	Erven
1836	SOBEKWA	412	0	32°10'18.32S	27°56'23.67E	Erven
1837	SOBEKWA	413	0	32°10'24.66S	27°56'22.59E	Erven
1838	NQAMAKWE	413	0	32°11'58.4S	27°56'29.09E	Erven
1839	NQAMAKWE	414	0	32°11'58.09S	27°56'28.68E	Erven
1840	SOBEKWA	414	0	32°10'28.79S	27°56'25E	Erven
1841	SOBEKWA	415	0	32°11'1.46S	27°56'27.18E	Erven
1842	NQAMAKWE	415	0	32°11'57.79S	27°56'28.29E	Erven
1843	NQAMAKWE	416	0	32°11'57.48S	27°56'27.85E	Erven
1844	SOBEKWA	416	0	32°11'2.35S	27°56'20.82E	Erven
1845	NQAMAKWE	417	0	32°11'57.15S	27°56'27.43E	Erven
1846	SOBEKWA	417	0	32°11'25.71S	27°55'8.86E	Erven
1847	NQAMAKWE	418	0	32°11'56.84S	27°56'27.02E	Erven
1848	SOBEKWA	419	0	32°11'22.88S	27°54'59.15E	Erven
1849	NQAMAKWE	419	0	32°11'56.54S	27°56'26.62E	Erven
1850	SOBEKWA	420	0	32°11'18.75S	27°54'53.65E	Erven
1851	NQAMAKWE	420	0	32°11'56.24S	27°56'26.22E	Erven
1852	SOBEKWA	421	0	32°11'14.51S	27°53'7.5E	Erven
1853	NQAMAKWE	421	0	32°11'55.95S	27°56'25.82E	Erven
1854	SOBEKWA	422	0	32°11'14.48S	27°53'2.01E	Erven
1855	NQAMAKWE	422	0	32°11'55.65S	27°56'25.42E	Erven
1856	SOBEKWA	423	0	32°11'13.13S	27°52'59.13E	Erven
1857	NQAMAKWE	423	0	32°11'55.32S	27°56'24.99E	Erven
1858	SOBEKWA	424	0	32°11'10.47S	27°52'57.67E	Erven
1859	NQAMAKWE	424	0	32°11'55S	27°56'24.56E	Erven
1860	SOBEKWA	425	0	32°11'8.68S	27°52'54.93E	Erven
1861	NQAMAKWE	425	0	32°11'54.69S	27°56'24.13E	Erven
1862	MAXEGWANAS	425	0	32°10'12.93S	28°0'16.35E	Erven
1863	SOBEKWA	426	0	32°11'6.07S	27°52'49.81E	Erven
1864	NQAMAKWE	426	0	32°11'40.25S	27°56'32.17E	Erven
1865	NQAMAKWE	427	0	32°11'40.94S	27°56'35.82E	Erven
1866	SOBEKWA	427	0	32°11'3.99S	27°52'54.42E	Erven
1867	SOBEKWA	430	0	32°10'51.75S	27°52'46.58E	Erven
1868	NQAMAKWE	430	0	32°11'42.16S	27°56'34.72E	Erven
1869	NQAMAKWE	431	0	32°11'42.56S	27°56'34.34E	Erven
1870	SOBEKWA	431	0	32°10'48.07S	27°52'50.39E	Erven
1871	NQAMAKWE	432	0	32°11'42.96S	27°56'33.95E	Erven
1872	NQAMAKWE	433	0	32°11'43.36S	27°56'33.57E	Erven
1873	NQAMAKWE	435	0	32°11'42.59S	27°56'37.36E	Erven
1874	NQAMAKWE	436	0	32°11'43.04S	27°56'36.97E	Erven
1875	NQAMAKWE	437	0	32°11'43.44S	27°56'36.6E	Erven
1876	NQAMAKWE	438	0	32°11'43.85S	27°56'36.21E	Erven
1877	NQAMAKWE	439	0	32°11'44.25S	27°56'35.83E	Erven
1878	NQAMAKWE	440	0	32°11'46.45S	27°56'38.18E	Erven
1879	SOBEKWA	440	0	32°10'25.01S	27°56'22.35E	Erven
1880	NQAMAKWE	441	0	32°11'45.36S	27°56'36.79E	Erven
1881	SOBEKWA	441	0	32°11'1.6S	27°56'24.07E	Erven
1882	NQAMAKWE	442	0	32°11'44.65S	27°56'35.44E	Erven
1883	SOBEKWA	442	0	32°11'23.72S	27°55'0.07E	Erven
1884	NQAMAKWE	443	0	32°11'44.14S	27°56'34.71E	Erven
1885	SOBEKWA	443	0	32°11'2.68S	27°52'48.94E	Erven
1886	NQAMAKWE	444	0	32°11'43.74S	27°56'35.08E	Erven
1887	SOBEKWA	444	0	32°9'59.66S	27°54'30.88E	Erven

1888	SOBEKWA	444	0	32°9'9.08S	27°50'44.08E	Erven
1889	NQAMAKWE	445	0	32°11'43.33S	27°56'35.47E	Erven
1890	NQAMAKWE	446	0	32°11'42.93S	27°56'35.85E	Erven
1891	SOBEKWA	446	0	32°9'32.62S	27°54'1.96E	Erven
1892	NQAMAKWE	447	0	32°11'42.52S	27°56'36.23E	Erven
1893	SOBEKWA	447	0	32°9'33.61S	27°53'58.52E	Erven
1894	NQAMAKWE	448	0	32°11'43.56S	27°56'38.18E	Erven
1895	SOBEKWA	448	0	32°9'33.46S	27°53'59.83E	Erven
1896	NQAMAKWE	449	0	32°11'43.96S	27°56'38.57E	Erven
1897	SOBEKWA	449	0	32°9'25.8S	27°53'40.04E	Erven
1898	NQAMAKWE	450	0	32°11'44.31S	27°56'38.92E	Erven
1899	SOBEKWA	450	0	32°9'23.91S	27°53'39.62E	Erven
1900	NQAMAKWE	451	0	32°11'44.8S	27°56'39.39E	Erven
1901	SOBEKWA	451	0	32°9'24.51S	27°53'39.4E	Erven
1902	NQAMAKWE	453	0	32°11'45.91S	27°56'40.55E	Erven
1903	NQAMAKWE	454	0	32°11'46.31S	27°56'40.91E	Erven
1904	NQAMAKWE	455	0	32°11'46.65S	27°56'41.26E	Erven
1905	SOBEKWA	455	0	32°10'34.56S	27°55'18.85E	Erven
1906	SOBEKWA	456	0	32°10'57.24S	27°51'6.86E	Erven
1907	NQAMAKWE	457	0	32°11'47.49S	27°56'42.06E	Erven
1908	SOBEKWA	457	0	32°10'58.33S	27°51'6.93E	Erven
1909	NQAMAKWE	458	0	32°11'48.25S	27°56'41.37E	Erven
1910	NQAMAKWE	459	0	32°11'47.85S	27°56'40.84E	Erven
1911	NQAMAKWE	461	0	32°11'47.31S	27°56'39.52E	Erven
1912	NQAMAKWE	462	0	32°11'46.7S	27°56'40.06E	Erven
1913	NQAMAKWE	463	0	32°11'45.35S	27°56'38.72E	Erven
1914	NQAMAKWE	464	0	32°11'44.83S	27°56'38.19E	Erven
1915	NQAMAKWE	465	0	32°11'44.48S	27°56'37.84E	Erven
1916	NQAMAKWE	466	0	32°11'44.11S	27°56'37.54E	Erven
1917	NQAMAKWE	467	0	32°11'40.87S	27°56'27.8E	Erven
1918	NQAMAKWE	468	0	32°11'41.13S	27°56'28.22E	Erven
1919	NQAMAKWE	469	0	32°11'41.41S	27°56'28.64E	Erven
1920	NQAMAKWE	470	0	32°11'41.7S	27°56'29.05E	Erven
1921	NQAMAKWE	471	0	32°11'41.99S	27°56'29.47E	Erven
1922	NQAMAKWE	473	0	32°11'42.55S	27°56'30.3E	Erven
1923	MFENYANA	473	0	32°10'19.04S	28°2'31.95E	Erven
1924	NQAMAKWE	474	0	32°11'42.84S	27°56'30.72E	Erven
1925	NQAMAKWE	475	0	32°11'43.12S	27°56'31.13E	Erven
1926	NQAMAKWE	476	0	32°11'43.41S	27°56'31.55E	Erven
1927	NQAMAKWE	477	0	32°11'43.7S	27°56'31.96E	Erven
1928	NQAMAKWE	478	0	32°11'44.64S	27°56'32.52E	Erven
1929	NQAMAKWE	480	0	32°11'45.2S	27°56'34.16E	Erven
1930	NQAMAKWE	481	0	32°11'45.53S	27°56'34.64E	Erven
1931	NQAMAKWE	482	0	32°11'45.83S	27°56'35.08E	Erven
1932	NQAMAKWE	483	0	32°11'46.12S	27°56'35.5E	Erven
1933	NQAMAKWE	484	0	32°11'46.41S	27°56'35.92E	Erven
1934	NQAMAKWE	485	0	32°11'46.71S	27°56'36.35E	Erven
1935	NQAMAKWE	486	0	32°11'47.37S	27°56'35.73E	Erven
1936	NQAMAKWE	487	0	32°11'47.08S	27°56'35.28E	Erven
1937	NQAMAKWE	489	0	32°11'46.5S	27°56'34.45E	Erven
1938	NQAMAKWE	490	0	32°11'46.2S	27°56'34.01E	Erven
1939	NQAMAKWE	492	0	32°11'45.57S	27°56'33.08E	Erven
1940	NQAMAKWE	493	0	32°11'44.36S	27°56'31.33E	Erven
1941	NQAMAKWE	494	0	32°11'44.09S	27°56'30.91E	Erven
1942	NQAMAKWE	495	0	32°11'43.8S	27°56'30.5E	Erven
1943	NQAMAKWE	496	0	32°11'43.51S	27°56'30.08E	Erven
1944	NQAMAKWE	497	0	32°11'43.22S	27°56'29.66E	Erven
1945	NQAMAKWE	498	0	32°11'42.93S	27°56'29.25E	Erven
1946	NQAMAKWE	499	0	32°11'42.66S	27°56'28.83E	Erven
1947	NQAMAKWE	501	0	32°11'42.08S	27°56'28E	Erven

1948	NQAMAKWE	503	0	32°11'41.5S	27°56'27.15E	Erven
1949	NQAMAKWE	504	0	32°11'42.55S	27°56'26.12E	Erven
1950	NQAMAKWE	505	0	32°11'42.92S	27°56'26.67E	Erven
1951	NQAMAKWE	506	0	32°11'43.22S	27°56'27.12E	Erven
1952	NQAMAKWE	507	0	32°11'43.51S	27°56'27.54E	Erven
1953	NQAMAKWE	508	0	32°11'43.78S	27°56'27.95E	Erven
1954	NQAMAKWE	509	0	32°11'44.07S	27°56'28.37E	Erven
1955	NQAMAKWE	510	0	32°11'44.36S	27°56'28.78E	Erven
1956	NQAMAKWE	511	0	32°11'44.65S	27°56'29.2E	Erven
1957	NQAMAKWE	512	0	32°11'44.92S	27°56'29.61E	Erven
1958	NQAMAKWE	513	0	32°11'45.21S	27°56'30.03E	Erven
1959	NQAMAKWE	514	0	32°11'45.5S	27°56'30.44E	Erven
1960	NQAMAKWE	515	0	32°11'45.82S	27°56'30.88E	Erven
1961	NQAMAKWE	516	0	32°11'46.43S	27°56'30.29E	Erven
1962	NQAMAKWE	517	0	32°11'46.13S	27°56'29.85E	Erven
1963	NQAMAKWE	518	0	32°11'45.84S	27°56'29.43E	Erven
1964	NQAMAKWE	519	0	32°11'45.57S	27°56'29.01E	Erven
1965	NQAMAKWE	520	0	32°11'45.28S	27°56'28.6E	Erven
1966	NQAMAKWE	521	0	32°11'44.99S	27°56'28.18E	Erven
1967	NQAMAKWE	522	0	32°11'44.7S	27°56'27.76E	Erven
1968	NQAMAKWE	523	0	32°11'44.43S	27°56'27.35E	Erven
1969	NQAMAKWE	524	0	32°11'44.14S	27°56'26.93E	Erven
1970	NQAMAKWE	525	0	32°11'43.85S	27°56'26.52E	Erven
1971	NQAMAKWE	526	0	32°11'43.55S	27°56'26.08E	Erven
1972	NQAMAKWE	527	0	32°11'43.15S	27°56'25.5E	Erven
1973	NQAMAKWE	528	0	32°11'46.45S	27°56'32.09E	Erven
1974	NQAMAKWE	529	0	32°11'46.94S	27°56'32.81E	Erven
1975	NQAMAKWE	530	0	32°11'47.33S	27°56'32.47E	Erven
1976	NQAMAKWE	531	0	32°11'47.67S	27°56'32.13E	Erven
1977	NQAMAKWE	532	0	32°11'48.03S	27°56'31.8E	Erven
1978	NQAMAKWE	533	0	32°11'48.38S	27°56'31.46E	Erven
1979	NQAMAKWE	534	0	32°11'48.74S	27°56'31.12E	Erven
1980	NQAMAKWE	434	0	32°11'42.03S	27°56'36.69E	Erven
1981	SOBEKWA	429	0	32°10'57.88S	27°52'48.09E	Erven
1982	NQAMAKWE	429	0	32°11'41.75S	27°56'35.1E	Erven
1983	NQAMAKWE	428	0	32°11'41.35S	27°56'35.49E	Erven
1984	SOBEKWA	428	0	32°11'1.54S	27°52'49.56E	Erven
1985	SOBEKWA	418	0	32°11'25.57S	27°55'3.07E	Erven
1986	NQAMAKWE	406	0	32°11'54.95S	27°56'30.33E	Erven
1987	NQAMAKWE	396	0	32°11'50.79S	27°56'34.29E	Erven
1988	NQAMAKWE	382	0	32°11'49.13S	27°56'39.75E	Erven
1989	NQAMAKWE	502	0	32°11'41.79S	27°56'27.59E	Erven
1990	NQAMAKWE	500	0	32°11'42.37S	27°56'28.42E	Erven
1991	NQAMAKWE	491	0	32°11'45.87S	27°56'33.53E	Erven
1992	NQAMAKWE	488	0	32°11'46.79S	27°56'34.86E	Erven
1993	NQAMAKWE	479	0	32°11'44.9S	27°56'33.72E	Erven
1994	NQAMAKWE	472	0	32°11'42.27S	27°56'29.88E	Erven
1995	NQAMAKWE	460	0	32°11'47.49S	27°56'40.4E	Erven
1996	NQAMAKWE	456	0	32°11'47S	27°56'41.6E	Erven
1997	SOBEKWA	453	0	32°10'35.67S	27°55'21.5E	Erven
1998	SOBEKWA	452	0	32°10'36.27S	27°55'20.89E	Erven
1999	NQAMAKWE	535	0	32°11'49.09S	27°56'30.78E	Erven
2000	NQAMAKWE	536	0	32°11'48.59S	27°56'30.07E	Erven

Development footprint<sup>1</sup> vertices:

Footprint	Latitude	Longitude
1	32°8'58.78S	27°54'16.21E
1	32°9'24.12S	27°54'37.08E
1	32°9'57.12S	27°55'6.26E
1	32°9'58.78S	27°55'53.32E
1	32°10'17.43S	27°56'31.95E
1	32°10'5.76S	27°56'49.94E
1	32°9'59.06S	27°57'13.31E
1	32°10'0.38S	27°57'56.06E
1	32°9'47.49S	27°59'31.04E
1	32°9'47.47S	28°0'35.69E
1	32°9'28.43S	28°1'31.07E
1	32°9'1.64S	28°2'24.2E
1	32°9'18.67S	28°2'54.2E
1	32°9'47.48S	28°2'57.88E
1	32°10'13.63S	28°2'48.12E
1	32°10'37.43S	28°3'46.62E
1	32°11'31.49S	28°3'59.19E
1	32°12'13.02S	28°4'0.66E
1	32°12'35.58S	28°2'59.1E
1	32°12'59.19S	28°2'40.52E
1	32°13'15.74S	28°3'9.13E
1	32°13'25.93S	28°3'45.78E
1	32°13'33.74S	28°4'19.48E
1	32°13'20.59S	28°4'50.2E
1	32°13'7.54S	28°5'4.91E
1	32°13'9.94S	28°5'24.14E
1	32°13'10.58S	28°5'58.59E
1	32°13'20.71S	28°6'12.07E
1	32°13'20.05S	28°6'46.19E
1	32°13'21.07S	28°6'49.11E
1	32°13'32.4S	28°7'6.72E
1	32°13'51.17S	28°7'9.73E
1	32°13'58.61S	28°7'5.35E
1	32°14'17.51S	28°7'45.85E
1	32°14'18.24S	28°7'47.53E
1	32°14'37.77S	28°8'0.89E
1	32°15'59.28S	28°6'45.11E
1	32°16'9.41S	28°6'30.3E
1	32°15'54.53S	28°6'8.29E
1	32°15'37.44S	28°4'38.28E
1	32°15'37.67S	28°3'59.09E
1	32°15'39.65S	28°3'25.67E
1	32°15'20.78S	28°3'16.26E
1	32°15'0.34S	28°3'1.72E
1	32°15'8.65S	28°2'33.67E
1	32°15'18.98S	28°1'51.7E
1	32°15'25.41S	28°1'33.55E
1	32°15'23.98S	28°1'1.74E
1	32°15'25.27S	28°0'43.05E
1	32°15'20.86S	28°0'27.28E
1	32°15'8.72S	28°0'17.54E

<sup>1</sup> “development footprint”, means the area within the site on which the development will take place and includes all ancillary developments for example roads, power lines, boundary walls, paving etc. which require vegetation clearance or which will be disturbed and for which the application has been submitted.



1	32°15'3.09S	28°0'12.04E
1	32°14'56.53S	27°59'52.8E
1	32°14'45.76S	27°59'38.55E
1	32°14'37.46S	27°59'32.23E
1	32°14'40.86S	27°59'2.81E
1	32°14'35.76S	27°58'35.71E
1	32°14'47.04S	27°57'44.96E
1	32°14'17.55S	27°56'46.89E
1	32°13'37.3S	27°56'36.13E
1	32°13'14.71S	27°56'18.04E
1	32°13'44.21S	27°55'36.38E
1	32°13'58.6S	27°54'35.44E
1	32°13'41.1S	27°54'5.55E
1	32°13'33S	27°53'20.41E
1	32°13'20.94S	27°52'43.42E
1	32°13'11.03S	27°52'19.45E
1	32°12'30.89S	27°52'6.98E
1	32°12'50.87S	27°51'8.24E
1	32°12'50.43S	27°50'39.99E
1	32°12'49.44S	27°50'14.67E
1	32°12'55.35S	27°50'8.88E
1	32°12'57.54S	27°49'45.76E
1	32°12'50.95S	27°49'24.97E
1	32°12'47.05S	27°49'13.06E
1	32°12'37.7S	27°48'29.12E
1	32°12'8.46S	27°47'34.26E
1	32°11'51.9S	27°47'39.39E
1	32°11'19.72S	27°48'6E
1	32°10'58.48S	27°48'37.8E
1	32°10'15.66S	27°49'13.08E
1	32°10'0.62S	27°49'41.22E
1	32°10'0.51S	27°49'56.96E
1	32°10'7.71S	27°50'21.74E
1	32°10'18.38S	27°50'31.44E
1	32°10'30.42S	27°51'11.22E
1	32°10'24.57S	27°51'28.44E
1	32°10'22.44S	27°51'37.66E
1	32°10'8.38S	27°51'33.74E
1	32°9'59.44S	27°52'12.15E
1	32°9'58.47S	27°52'55.86E
1	32°9'14.14S	27°53'21.23E
1	32°8'58.78S	27°54'16.21E
1	32°8'58.78S	27°54'16.21E

Wind and Solar developments with an approved Environmental Authorisation or applications under consideration within 30 km of the proposed area

No	EIA Reference No	Classification	Status of application	Distance from proposed area (km)
1	12/12/20/2091/2/AM2	Wind	Approved	0
2	12/12/20/2091/2/AM4	Wind	Approved	0
3	12/12/20/2091/2/AM3	Wind	Approved	0

## Environmental Management Frameworks relevant to the application

No intersections with EMF areas found.

## Environmental screening results and assessment outcomes

The following sections contain a summary of any development incentives, restrictions, exclusions or prohibitions that apply to the proposed development footprint as well as the most environmental sensitive features on the footprint based on the footprint sensitivity screening results for the application classification that was selected. The application classification selected for this report is:

**Utilities Infrastructure | Pipelines | Water | Fresh\_Storm Water.**

### Relevant development incentives, restrictions, exclusions or prohibitions

The following development incentives, restrictions, exclusions or prohibitions and their implications that apply to this footprint are indicated below.

Incentive, restriction or prohibition	Implication
Strategic Gas Pipeline Corridors-Phase 7: Coega to Richards Bay	<a href="https://screening.environment.gov.za/ScreeningDownloads/DevelopmentZones/Combined_GAS.pdf">https://screening.environment.gov.za/ScreeningDownloads/DevelopmentZones/Combined_GAS.pdf</a>

### Proposed Development Area Environmental Sensitivity

The following summary of the development footprint environmental sensitivities is identified. Only the highest environmental sensitivity is indicated. The footprint environmental sensitivities for the proposed development footprint as identified, are indicative only and must be verified on site by a suitably qualified person before the specialist assessments identified below can be confirmed.

Theme	Very High sensitivity	High sensitivity	Medium sensitivity	Low sensitivity
Agriculture Theme	X			
Animal Species Theme		X		
Aquatic Biodiversity Theme	X			
Archaeological and Cultural Heritage Theme	X			
Civil Aviation Theme				X
Defence Theme				X
Paleontology Theme	X			
Plant Species Theme			X	
Terrestrial Biodiversity Theme	X			

### Specialist assessments identified

Based on the selected classification, and the known impacts associated with the proposed development, the following list of specialist assessments have been identified for inclusion in the assessment report. It is the responsibility of the EAP to confirm this list and to motivate in the

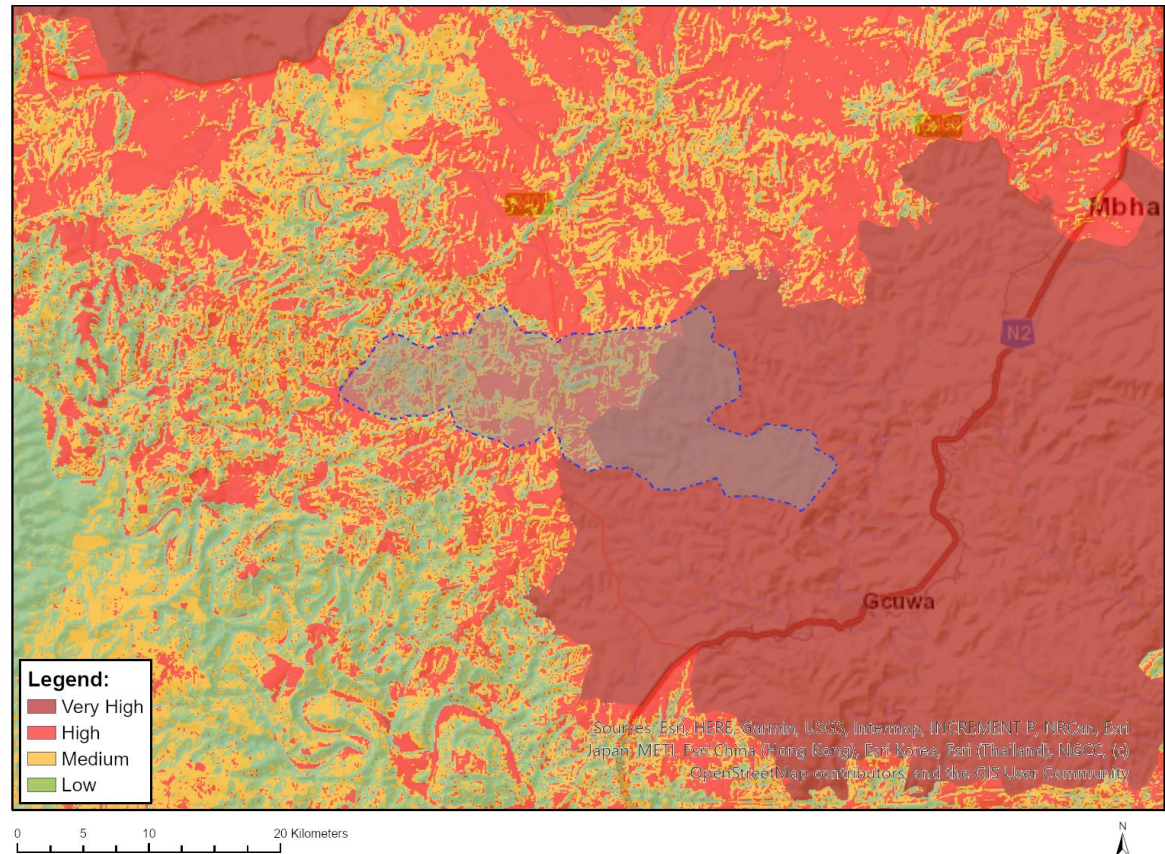
assessment report, the reason for not including any of the identified specialist study including the provision of photographic evidence of the footprint situation.

No	Specialist assessment	Assessment Protocol
1	Agricultural Impact Assessment	<a href="https://screening.environment.gov.za/ScreeningDownloads/AssessmentProtocols/Gazetted_General_Agriculture_Assessment_Protocols.pdf">https://screening.environment.gov.za/ScreeningDownloads/AssessmentProtocols/Gazetted_General_Agriculture_Assessment_Protocols.pdf</a>
2	Archaeological and Cultural Heritage Impact Assessment	<a href="https://screening.environment.gov.za/ScreeningDownloads/AssessmentProtocols/GuidanceforHIA.pdf">https://screening.environment.gov.za/ScreeningDownloads/AssessmentProtocols/GuidanceforHIA.pdf</a>
3	Palaeontology Impact Assessment	<a href="https://screening.environment.gov.za/ScreeningDownloads/AssessmentProtocols/GuidanceforPIA.pdf">https://screening.environment.gov.za/ScreeningDownloads/AssessmentProtocols/GuidanceforPIA.pdf</a>
4	Terrestrial Biodiversity Impact Assessment	<a href="https://screening.environment.gov.za/ScreeningDownloads/AssessmentProtocols/Gazetted_Terrestrial_Biodiversity_Assessment_Protocols.pdf">https://screening.environment.gov.za/ScreeningDownloads/AssessmentProtocols/Gazetted_Terrestrial_Biodiversity_Assessment_Protocols.pdf</a>
5	Aquatic Biodiversity Impact Assessment	<a href="https://screening.environment.gov.za/ScreeningDownloads/AssessmentProtocols/Gazetted_Aquatic_Biodiversity_Assessment_Protocols.pdf">https://screening.environment.gov.za/ScreeningDownloads/AssessmentProtocols/Gazetted_Aquatic_Biodiversity_Assessment_Protocols.pdf</a>
6	Geotechnical Assessment	<a href="https://screening.environment.gov.za/ScreeningDownloads/AssessmentProtocols/Gazetted_General_Requirement_Assessment_Protocols.pdf">https://screening.environment.gov.za/ScreeningDownloads/AssessmentProtocols/Gazetted_General_Requirement_Assessment_Protocols.pdf</a>
7	Socio-Economic Assessment	<a href="https://screening.environment.gov.za/ScreeningDownloads/AssessmentProtocols/Gazetted_General_Requirement_Assessment_Protocols.pdf">https://screening.environment.gov.za/ScreeningDownloads/AssessmentProtocols/Gazetted_General_Requirement_Assessment_Protocols.pdf</a>
8	Plant Species Assessment	<a href="https://screening.environment.gov.za/ScreeningDownloads/AssessmentProtocols/Gazetted_Plant_Species_Assessment_Protocols.pdf">https://screening.environment.gov.za/ScreeningDownloads/AssessmentProtocols/Gazetted_Plant_Species_Assessment_Protocols.pdf</a>
9	Animal Species Assessment	<a href="https://screening.environment.gov.za/ScreeningDownloads/AssessmentProtocols/Gazetted_Animal_Species_Assessment_Protocols.pdf">https://screening.environment.gov.za/ScreeningDownloads/AssessmentProtocols/Gazetted_Animal_Species_Assessment_Protocols.pdf</a>

# Results of the environmental sensitivity of the proposed area.

The following section represents the results of the screening for environmental sensitivity of the proposed footprint for relevant environmental themes associated with the project classification. It is the duty of the EAP to ensure that the environmental themes provided by the screening tool are comprehensive and complete for the project. Refer to the disclaimer.

## MAP OF RELATIVE AGRICULTURE THEME SENSITIVITY



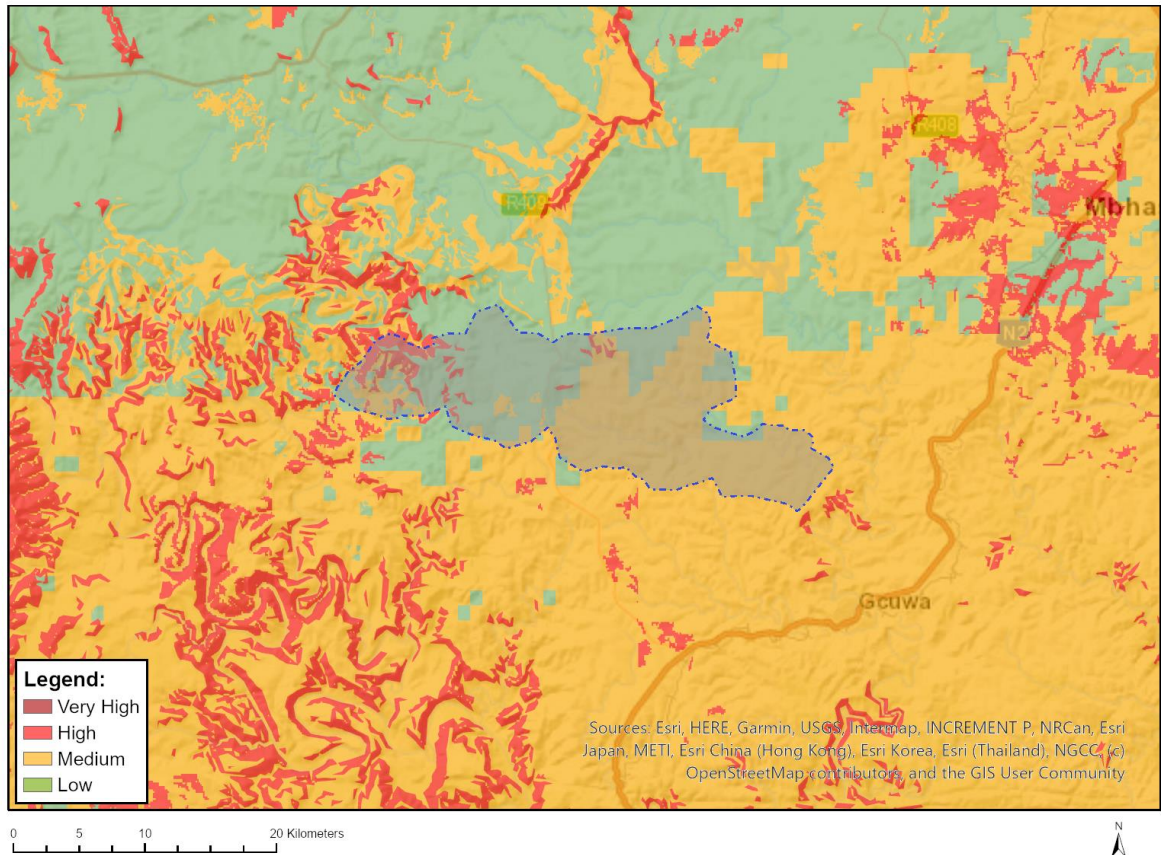
Very High sensitivity	High sensitivity	Medium sensitivity	Low sensitivity
X			

### Sensitivity Features:

Sensitivity	Feature(s)
High	Subsistence_Farming_1
High	08. Moderate
High	09. Moderate-High
High	10. Moderate-High
Low	05. Low
Low	04. Low-Very low
Low	03. Low-Very low
Medium	07. Low-Moderate
Medium	06. Low-Moderate
Very High	Butterworth-Idutywa PAA



## MAP OF RELATIVE ANIMAL SPECIES THEME SENSITIVITY



Where only a sensitive plant unique number or sensitive animal unique number is provided in the screening report and an assessment is required, the environmental assessment practitioner (EAP) or specialist is required to email SANBI at [eiadatarequests@sanbi.org.za](mailto:eiadatarequests@sanbi.org.za) listing all sensitive species with their unique identifiers for which information is required. The name has been withheld as the species may be prone to illegal harvesting and must be protected. SANBI will release the actual species name after the details of the EAP or specialist have been documented.

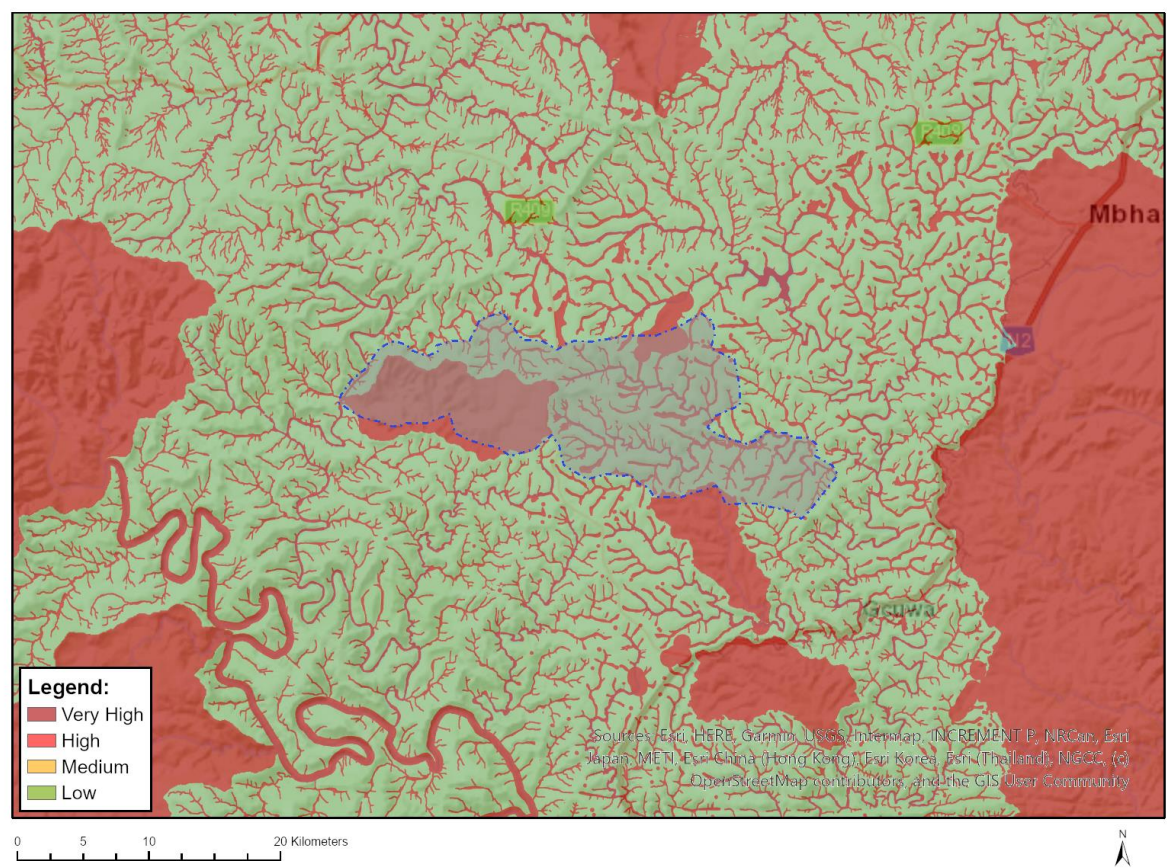
Very High sensitivity	High sensitivity	Medium sensitivity	Low sensitivity
	X		

### Sensitivity Features:

Sensitivity	Feature(s)
High	Aves-Gyps coprotheres
High	Aves-Falco biarmicus
Low	Subject to confirmation
Medium	Aves-Hydroprogne caspia
Medium	Aves-Neotis denhami
Medium	Insecta-Chrysoritis lyncurium
Medium	Mammalia-Chrysospalax trevelyani
Medium	Sensitive species 8



MAP OF RELATIVE AQUATIC BIODIVERSITY THEME SENSITIVITY

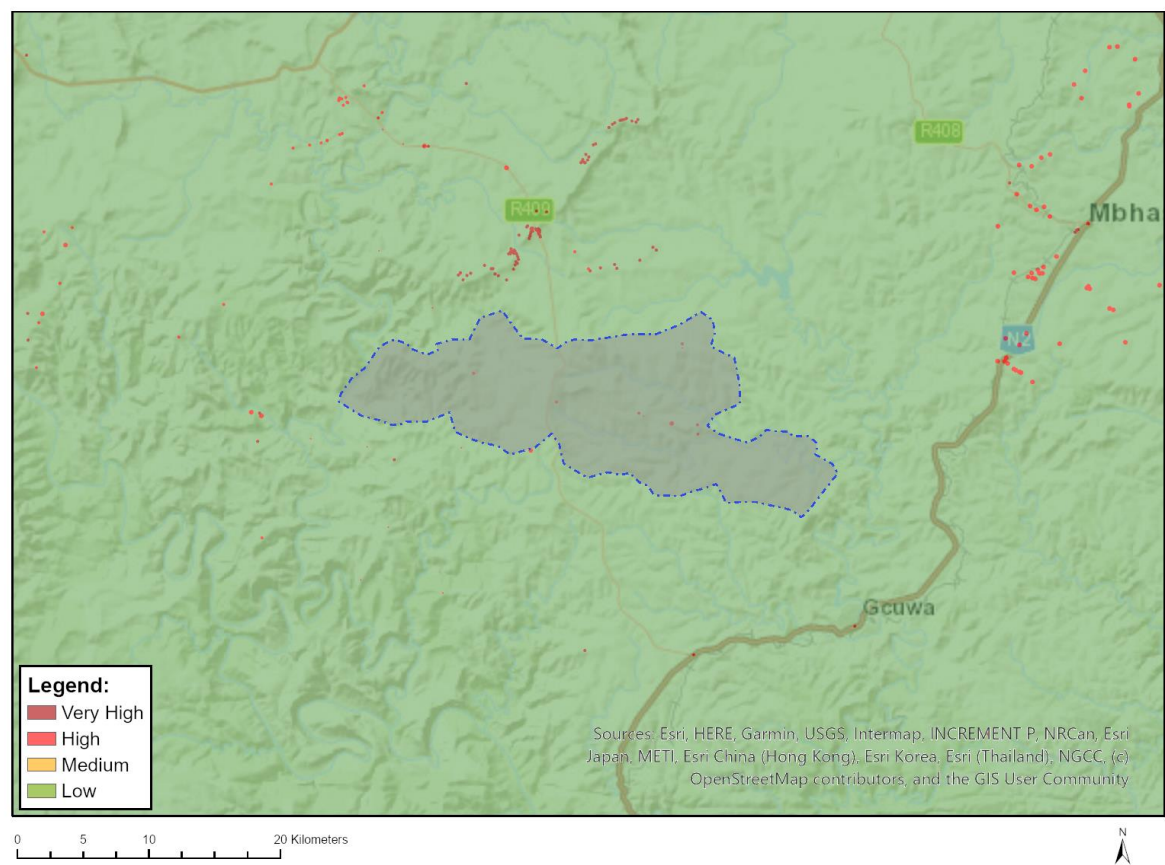


Very High sensitivity	High sensitivity	Medium sensitivity	Low sensitivity
X			

Sensitivity Features:

Sensitivity	Feature(s)
Low	Low Sensitivity
Very High	ESA 1
Very High	ESA 2
Very High	Wetlands_Channelled valley-bottom
Very High	Wetlands_Depression
Very High	Wetlands_Floodplain
Very High	Wetlands_Seep
Very High	Wetlands_Unchannelled valley-bottom
Very High	Wetlands_Valley-bottom wetland
Very High	FEPA Subcatchment
Very High	Rivers

MAP OF RELATIVE ARCHAEOLOGICAL AND CULTURAL HERITAGE THEME SENSITIVITY

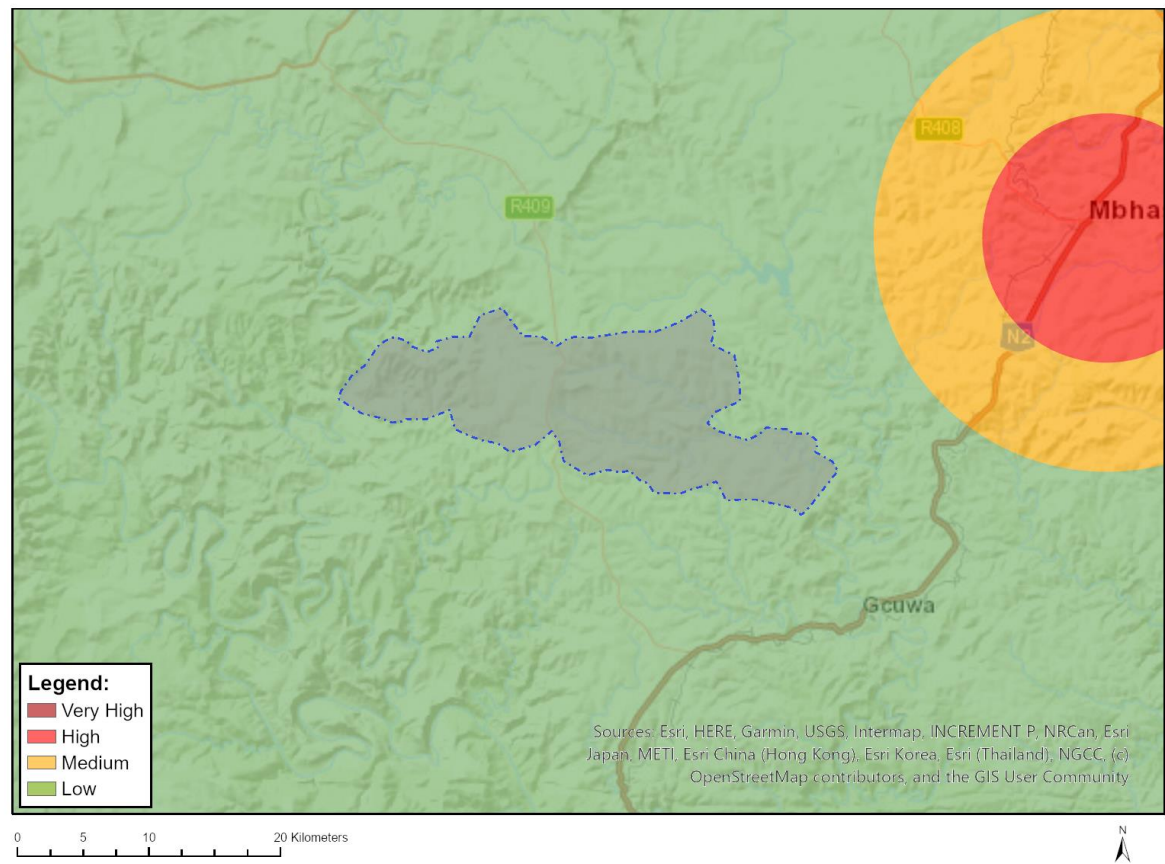


Very High sensitivity	High sensitivity	Medium sensitivity	Low sensitivity
X			

Sensitivity Features:

Sensitivity	Feature(s)
High	Within 150m of a Grade IIIa Heritage site
High	Within 100m of a Grade IIIb Heritage site
High	Within 50m of a Grade IIIc Heritage site
Low	Low Sensitivity
Very High	Within 100m of an Ungraded Heritage site

MAP OF RELATIVE CIVIL AVIATION THEME SENSITIVITY



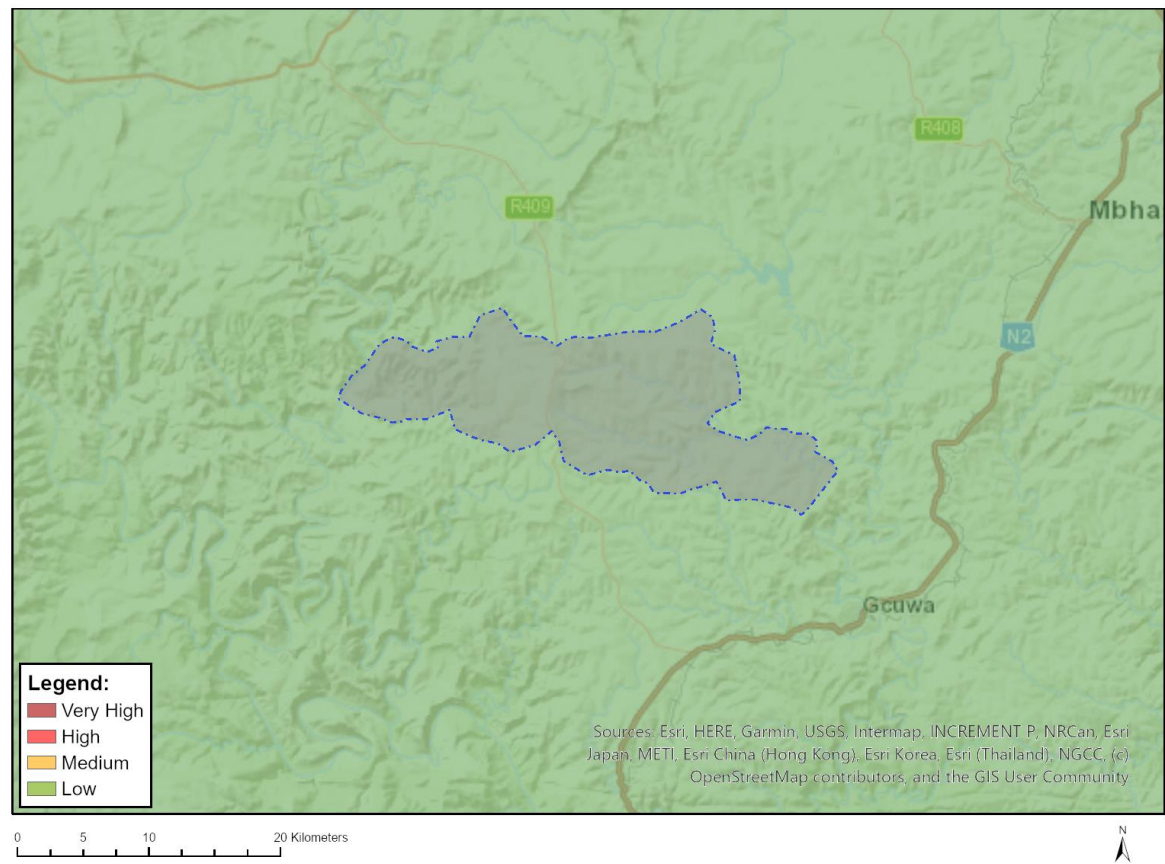
Very High sensitivity	High sensitivity	Medium sensitivity	Low sensitivity
			X

Sensitivity Features:

Sensitivity	Feature(s)
Low	Low sensitivity



MAP OF RELATIVE DEFENCE THEME SENSITIVITY

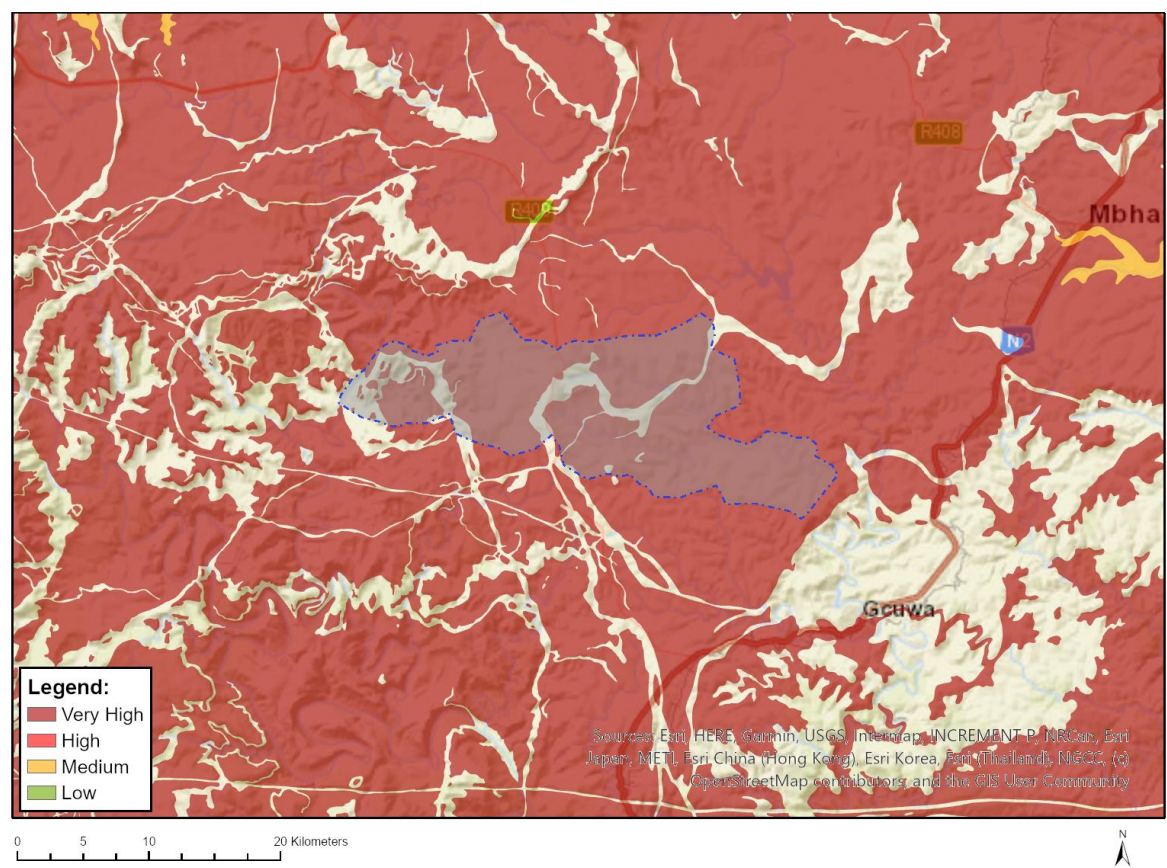


Very High sensitivity	High sensitivity	Medium sensitivity	Low sensitivity
			X

Sensitivity Features:

Sensitivity	Feature(s)
Low	Low Sensitivity

MAP OF RELATIVE PALEONTOLOGY THEME SENSITIVITY

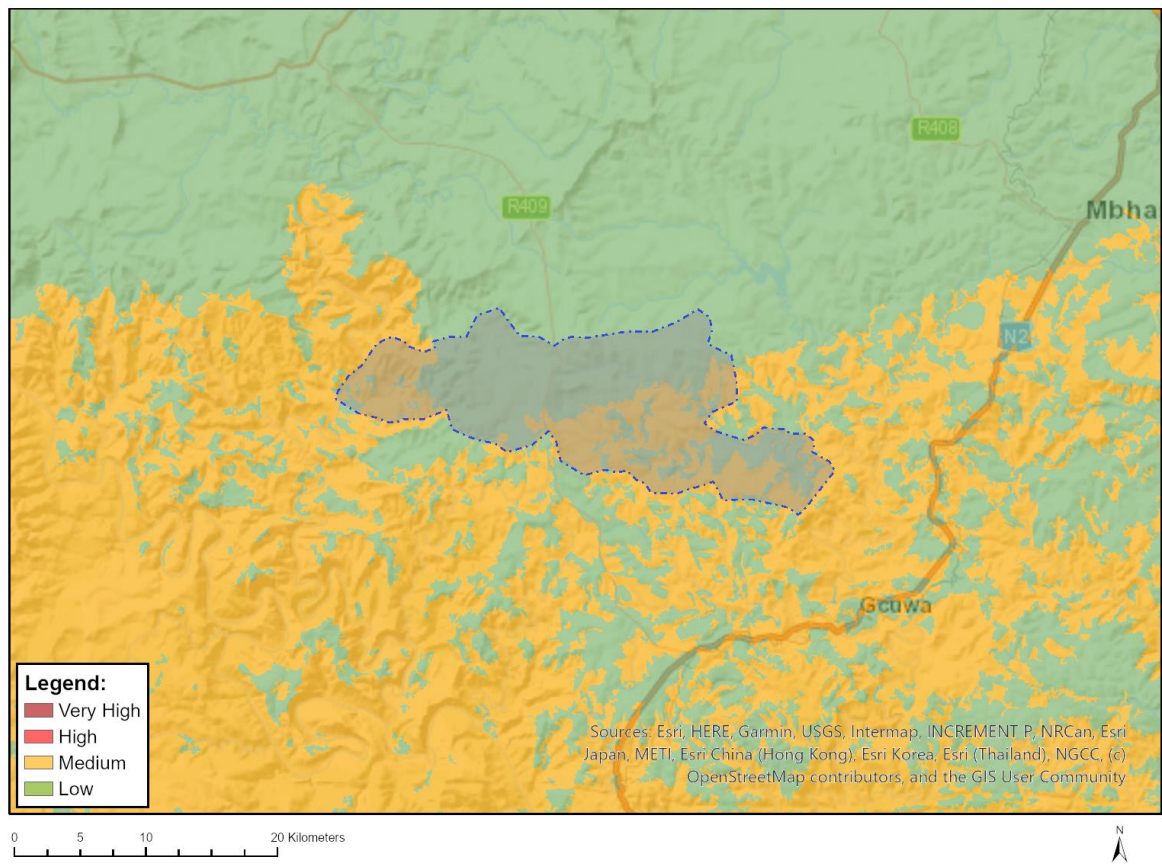


Very High sensitivity	High sensitivity	Medium sensitivity	Low sensitivity
X			

Sensitivity Features:

Sensitivity	Feature(s)
Very High	Features with a Very High paleontological sensitivity

## MAP OF RELATIVE PLANT SPECIES THEME SENSITIVITY



Where only a sensitive plant unique number or sensitive animal unique number is provided in the screening report and an assessment is required, the environmental assessment practitioner (EAP) or specialist is required to email SANBI at [eiadatarequests@sanbi.org.za](mailto:eiadatarequests@sanbi.org.za) listing all sensitive species with their unique identifiers for which information is required. The name has been withheld as the species may be prone to illegal harvesting and must be protected. SANBI will release the actual species name after the details of the EAP or specialist have been documented.

Very High sensitivity	High sensitivity	Medium sensitivity	Low sensitivity
		X	

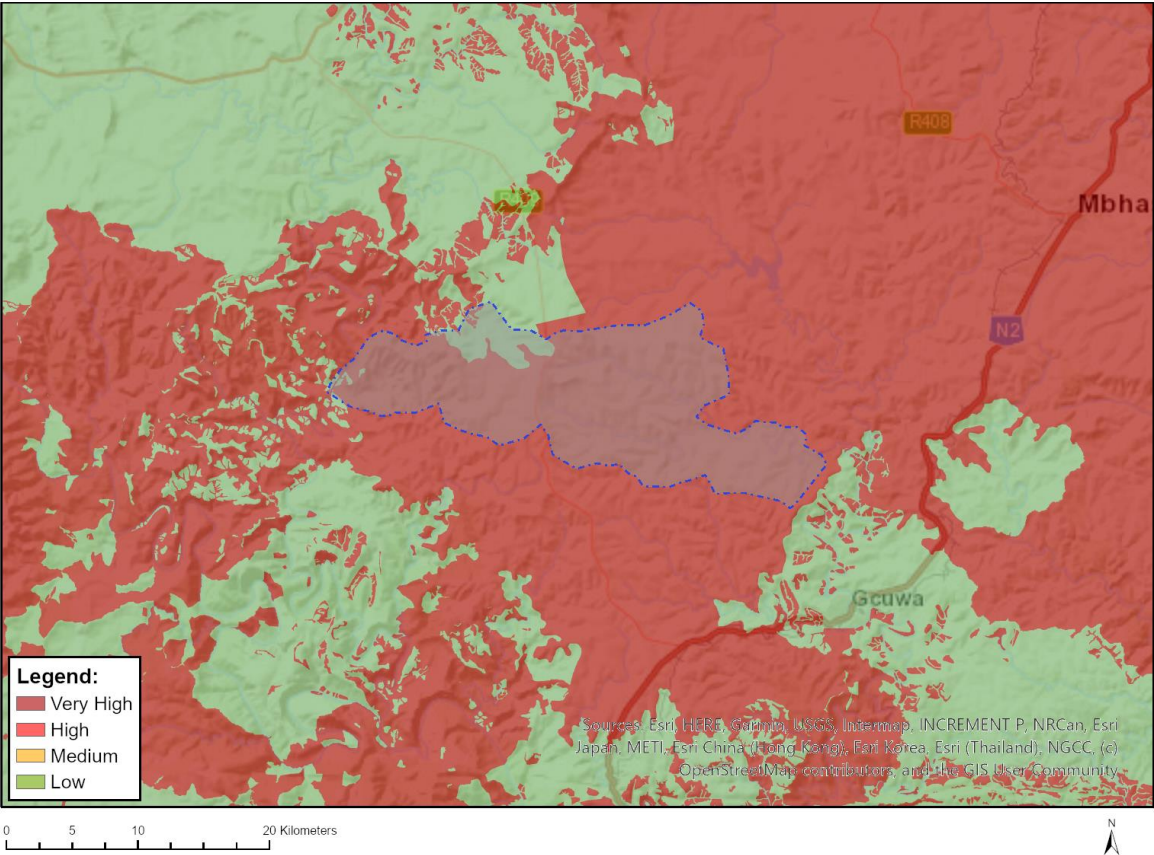
### Sensitivity Features:

Sensitivity	Feature(s)
Low	Low Sensitivity
Medium	Sensitive species 1252
Medium	Greyia flanaganii
Medium	Sensitive species 1144
Medium	Sensitive species 80
Medium	Asclepias cooperi
Medium	Adromischus liebenbergii subsp. orientalis
Medium	Sensitive species 535
Medium	Sensitive species 554
Medium	Sensitive species 451
Medium	Sensitive species 1248
Medium	Sensitive species 944
Medium	Sensitive species 191



Medium	Sensitive species 19
Medium	Prunus africana

### MAP OF RELATIVE TERRESTRIAL BIODIVERSITY THEME SENSITIVITY



Very High sensitivity	High sensitivity	Medium sensitivity	Low sensitivity
X			

#### Sensitivity Features:

Sensitivity	Feature(s)
Low	Low Sensitivity
Very High	CBA1
Very High	CBA2
Very High	ESA2
Very High	FEPA Subcatchment
Very High	EN_Mthatha Moist Grassland